



INCA Associate Members: Expertise you can trust

Discover their products, services, and opportunities
for collaboration across the UK EWI industry

together **STRONGER**



LEADING THE UK EWI INDUSTRY

The recognised trade association for the External Wall Insulation (EWI) industry in the UK

Representing members of the External Wall Insulation industry for over 40 years, through technical excellence, education, effective collaboration, strong marketing, communications, and member benefits.

WHO WE ARE

Our members include System Designers, Installation Contractors, Component Suppliers and other professional organisations related to the external wall insulation industry who are all committed to the highest levels of quality and service.

PROFESSIONAL
SERVICES

SYSTEM
DESIGNERS

INSTALLATION
CONTRACTORS
(+£2M T/O)

COMPONENT
SUPPLIERS

SMALL
INSTALLATION
CONTRACTORS
(-£2M T/O)



VISIT WEBSITE

Our Associate Members are trusted specialists in the UK External Wall Insulation industry, providing products, services, technical expertise, and innovative solutions that enable projects to be delivered with confidence, compliance, and excellence. From advanced insulation materials and precision fixings to specialist testing services, they help raise industry standards, support training initiatives, and ensure clients across housing, commercial, and retrofit projects have access to high-quality materials and services, all underpinned by best practice and professional collaboration.



We are proud to introduce our Associate Members - specialists who bring expertise and value to our community. Explore their services and discover opportunities for collaboration.



CONTENTS

Who we are	2-3
Members	4-22
INSULATION	
Bewi Insulation & Construction (UK) Ltd	4
Euroform Products Ltd	5
Kingspan Insulation Ltd	6
Knauf Insulation Ltd	7
Steico UK Ltd	8
BEADS, TRIMS, PROFILES & ANCILLARIES	
Panelcraft Access Panels	9
Protektor Group UK Ltd - WEMICO	10
Sysclad Manufacturing Ltd	11
Trueline Expanded Products Ltd.....	12
FIXINGS	
EJOT UK Ltd	13
Klimas Wkręt-Met	14
Swifix Ltd	15
DECORATIVE FINISHES	
Forterra Building Products Ltd	16
Stonepack Ltd.....	17
SERVICE PROVIDERS	
2CT Consultants Limited	18
Kiwa Building Products Ltd.....	19
TRAINING PARTNERS	
Efficiency North.....	20
Support for Success.....	21
The Verdancy Group	22
Benefits of INCA Membership	23
Members Listing	24

BEWI

BEWI is a leading provider of insulation, packaging and components solutions

BEWI UK External Wall Insulation is a durable system in EPS and mineral wool, designed to last your building's lifetime. Suitable for external wall systems, it can be bonded or mechanically fixed for flexibility.

A cost-effective alternative to rebuilding, it delivers reliable thermal performance with options of 0.030 W/mK and 0.038 W/mK.

BEWI Basetherm provides a strong, impact-resistant base board below the damp-proof course.

BEWI – insulation that lasts.



Key features

- 100% recyclable
- A+ rating in the BRE Green Guide to Specification
- Lightweight and easy to handle
- Off-cut collection service



VIEW FULL PROFILE ON THE INCA DIRECTORY



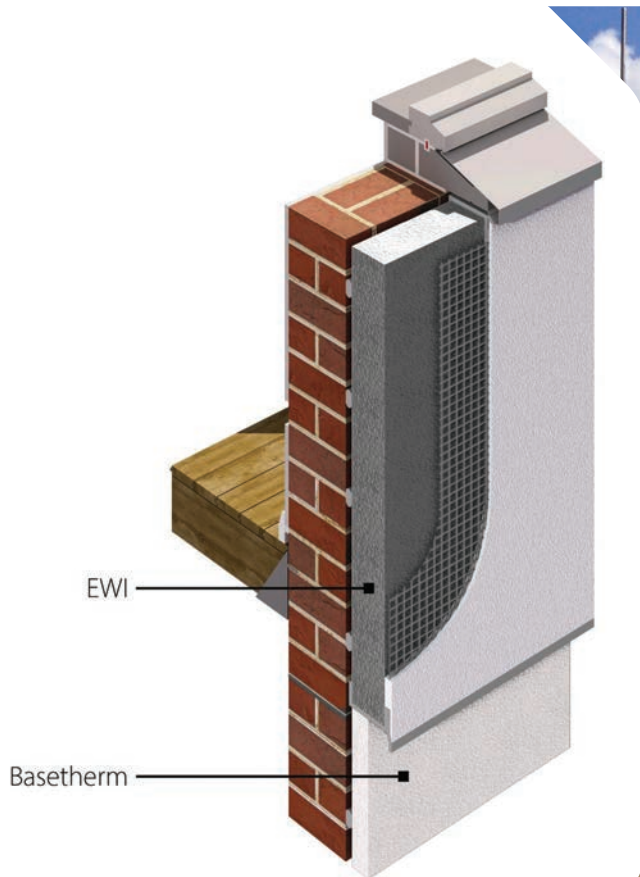
0870 600 3666



sales.insulation.uk@bewi.com



www.bewi.com/uk





Ensuring fire and thermal compliance in building façades

Euroform supplies a range of high-performance building boards and cladding solutions developed through research, testing and certification. Their products are backed by a skilled technical team offering remote or on-site support, plus reliable nationwide logistics and in-house bespoke fabrication capabilities, providing the EWI market with dependable, expert-driven supply and service.

Euroform's Versarend® offering was developed as a direct render carrier board for projects where a non-combustible façade is required, and has A1 Euroclass reaction to fire classification. In tests Versarend® has proved compatible with leading render systems.



Key features

- Supplier of render carrier boards for direct render and EWI render systems
- Versarend® has A1 Euroclass reaction to fire classification
- Versarend® can be scored with a utility knife and snapped to size easily
- Versarend® is highly moisture tolerant so will not rot or degrade



VIEW FULL PROFILE ON THE INCA DIRECTORY



01925 860999



sales@euroform.co.uk



www.euroform.co.uk





Insulation solutions for roofs, walls & floors

At Kingspan Insulation, we are your insulation solutions provider, dedicated to empowering your projects with products where quality is assured. We take pride in delivering a diverse portfolio of products that seamlessly combine advanced technologies and tested performance, which help to reduce buildings' operational carbon.

A number of our product ranges deliver market leading performance in terms of thermal conductivity, allowing our customers to meet energy performance and sustainability targets, even in challenging spaces.

As part of our ranges, we offer Kingspan Kooltherm K5 External Wall Board for EWI applications.



Key features

- The thinnest commonly used EWI - ideal for retaining internal space
- Using thinner insulation could allow more daylight into a building
- Lightweight insulation that is easy to transport, handle and install
- Supported by extensive technical service & on-site product training



VIEW FULL PROFILE ON THE INCA DIRECTORY



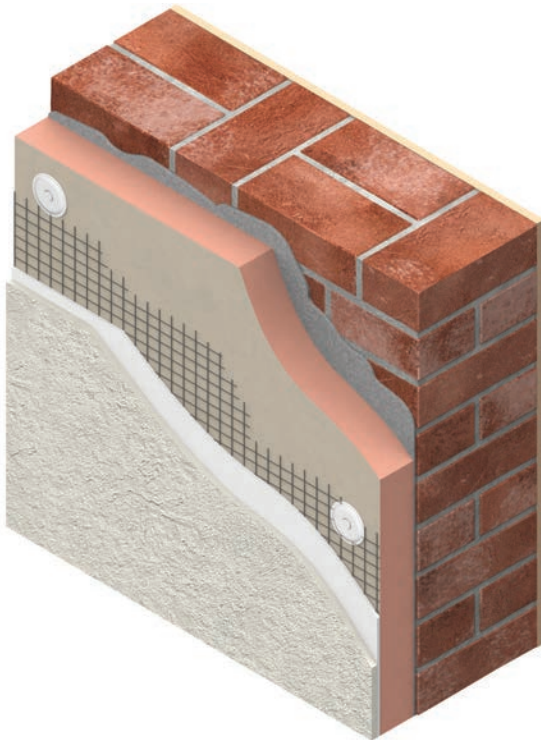
01544 388 601



info@kingspaninsulation.co.uk



www.kingspaninsulation.co.uk



KNAUF INSULATION

We provide high-performance rock and glass mineral wool solutions

With more than 40 years of experience we are one of the fastest growing and most respected names in insulation worldwide.

We are committed to helping our customers to meet the increasing demand for energy efficiency and sustainability in homes, non-residential buildings and industrial applications.

Our rock mineral wool insulation solutions are mainly made from volcanic rock, typically basalt and dolomite, and around 35% recycled content.



Key features

- UK based manufacturer of high performing insulation products
- Euroclass A1 non-combustible rock mineral wool solutions for EWI systems
- RocksilK EWI and Rainscreen Slabs are both BBA Certified
- Partners with EWI system designers as a component supplier



VIEW FULL PROFILE ON THE INCA DIRECTORY



07702 674 600



chris.rogers@knaufinsulation.com



knauf.com/en-GB/knauf-insulation





Wood fibre insulation and bio-based construction materials

Founded in 1986, STEICO develops, produces and markets wood fibre insulation as well as bio based building materials such as I joists and laminated veneer lumber (LVL). Made from untreated, PEFC certified (PEFC/04-31-2550) wood, STEICO products are manufactured in four plants around Europe (in Poland and France). The company's insulation range offers rigid boards, flexible batts and air injected wood fibre insulation, supporting both new build and retrofit projects and suitable for a wide range of applications such as External Wall Insulation.

STEICO, whose UK headquarters are based in Caddington, England, has local sales and technical teams to support customers in the field and with technical assistance.



Key features

- Wood from responsible forestry - PEFC certified
- Water-repellent, diffusion-open boards
- Compatibility with many types of plaster
- Protection against cold, heat and noise



VIEW FULL PROFILE ON THE INCA DIRECTORY



+44 (0) 1727 51 51 20



sales@steico.com



<https://www.steico.com/uk/>



External Wall insulation using wood fibre



www.steico.com



PANELCRAFT
ACCESS PANELS

Panelcraft Access Panels manufacture insulated meter boxes for EWI projects

THE EWI METER BOX THAT FITS OVER THE EXISTING METER

On many EWI projects, the meter box detail becomes more complicated than it needs to be. Our insulated gas and electric meter boxes are designed to fit over the existing meter housing, helping you avoid unnecessary relocation, disruption, and delay.

That means a neater finish, a more practical installation, and a better way to protect thermal integrity without creating extra site headaches.

Talk to us if you're planning an EWI project.

THE
EWI
S E R I E S
Insulated, Fire retardant
Gas & Electric Meter Boxes



Key features

- Fits over existing meter housing
- Helps avoid meter relocation
- Designed specifically for EWI projects
- Made in the UK



VIEW FULL
PROFILE ON THE
INCA DIRECTORY



01827 720 830



sales@panelcraftaccesspanels.com



www.panelcraftaccesspanels.com



Specialist manufacturer of profiles and trims for EWI systems

Protektor, through its WEMICO brand, is a leading UK manufacturer of profiles, beads and trims for External Wall Insulation Systems and other Facade applications.

With over four decades of expertise, WEMICO is synonymous with quality and service, offering a comprehensive range of profiles engineered to meet the demands of modern EWI Systems.

Our products are designed to deliver long-term performance, durability and full compliance with current standards, including PAS requirements.

Committed to technical excellence, WEMICO supports customers in delivering high performing reliable solutions.



Key features

- Comprehensive range of PAS 2035 compliant EWI profiles and trims
- UK-based manufacturing, extensive stock holding and in-house logistics
- Precision engineered profiles for consistent performance
- Full technical support and site measures available.



VIEW FULL
PROFILE ON THE
INCA DIRECTORY



01562 820123



sales@wemico.co.uk



www.protektor.co.uk





For all your specialist metal fabrication requirements

Transform your projects with Sysclad Manufacturing. Combining advanced technology with expert craftsmanship.

We have some of the latest state-of-the-art machinery (lasers, punch press, press brakes, guillotines, and welding), thus offering rapid turnaround times with ensured quality, you can rely on every time. We can supply an extensive range of EWI products, sills, fascias, soffits, rainwater goods, or any custom-made components. Our solutions are built to last. We are now proud to offer a BFRC-approved coping system, ensuring a water-tight finish to your roofing and facade applications.

Partner with a team committed to excellence from concept to completion.



Key features

- Expert in EWI, cladding design and manufacturing solutions
- Dedicated project manager from concept to survey, design & delivery
- 130+ years of combined project management experience
- Precision-engineered metal products, built to perform



VIEW FULL PROFILE ON THE INCA DIRECTORY



01952 466 664



sales@sysclad.co.uk



www.sysclad.co.uk



BEADS, TRIMS, PROFILES & ANCILLARIES



Key features

- In-house powder coating facility
- Industry leading certifications
- Quick lead times
- Nationwide coverage



VIEW FULL
PROFILE ON THE
INCA DIRECTORY

A leading UK manufacturer of bespoke architectural products and systems

With Qualicoat-approved in-house powder coating, a full site survey team, and in-house CAD & design capabilities, our services are second to none - from design to delivery, we manufacture installation-ready solutions for the construction industry.

Our certification means we meet international QUALICOAT standards, independently audited to ensure each coating performs as beautifully as it looks. Combined with our ISO 9001:2025 and ISO 14001:2025 accreditations, you can trust Trueline to deliver sustainable excellence, project after project.



01562 823267



enquiries@truelineproducts.co.uk



www.truelineproducts.co.uk

TRUeline PRODUCTS 30 YEARS MANUFACTURING
CELEBRATING OVER 30 YEARS IN MANUFACTURING

QUALICOAT
Inspired by architecture. Trusted by professionals.
QUALICOAT APPROVED APPLICATOR
Guaranteed Quality
Lasting Performance

A trusted UK leader in architectural powder coating and bespoke aluminium fabrication.

- Bespoke Architectural Fabrications
- Coping Systems
- Soffit Systems
- Fascias
- Flashings
- Beads & Profiles for Render, Roughcast & EWI Systems
- Pressed Aluminium Trims
- Products Tested to EN 13823, Fire Rating of A2-s,d0
- Structural Calculations
- Quick Lead Times
- UK-wide Coverage

TRUeline FABRICATIONS **TRUeline LASER** **TRUeline EWI BEADS & PROFILES** **TRUeline COPINGS** **TRUETRIMS BUILDING PRODUCTS**

DNV ISO 9001:2015 CERTIFIED
DNV ISO 14001:2015 CERTIFIED
INCA AWARDS WINNER
INCA AWARDS WINNER
2023 WINNER INCA AWARDS
INCA AWARDS 2025 WINNER
MADE IN BRITAIN
WINNER 3 T 2023 ARS
CONVANT





ETICS solutions that set higher standards for EWI systems

As a global manufacturer of advanced fastening products for construction, EJOT provides an extensive range of innovative components for ETICS and EWI systems.

EJOT's products ensure external wall insulation systems can be installed efficiently and easily, making the highest thermal and quality standards a reality.

The brand is well known in the EWI sector for insulation anchors, but with EJOT's growing range of PVC profiles and mounting elements, all designed to greatly reduce thermal bridging and maximise integrity of the façade, the company offers the most comprehensive and technically advanced component package.



Key features

- Specialist anchor and washer concepts for safe installation of EWI systems
- Full range of ancillary products, installation tools and accessories
- Unique portfolio of mounting elements and exterior attachments
- Integral range of profile systems backed by EJOT 360 degree support



**VIEW FULL
PROFILE ON THE
INCA DIRECTORY**



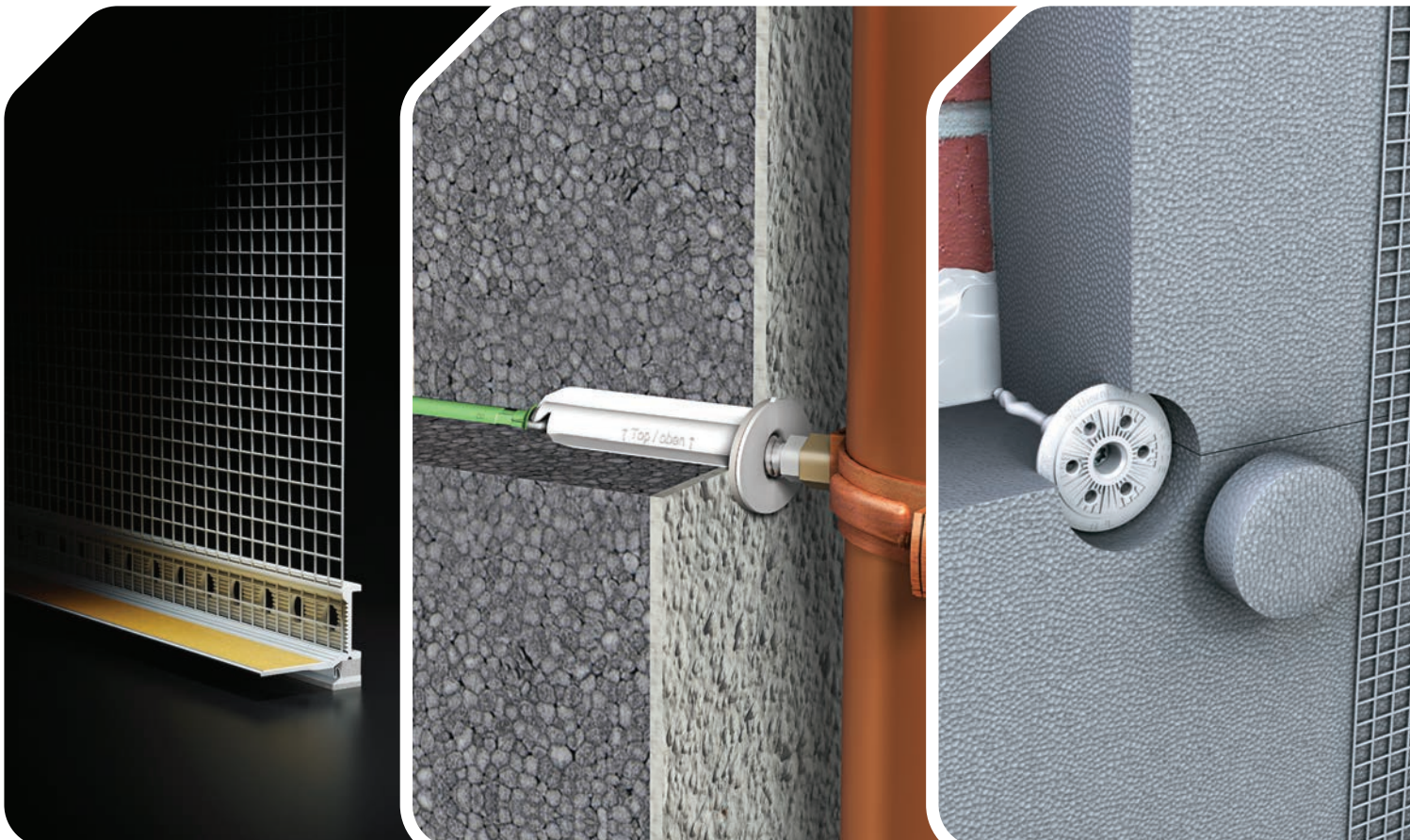
01977 687040



mnewell@ejot.com



www.ejot.co.uk



KLIMAS

FASTENER TECHNOLOGIES

European manufacturer of fastening techniques with UKTA (BBA)

KLIMAS Wkret-met goal is to give satisfaction to its professional partners and provide high quality products and service dedicated to specific EWI system requirement. KLIMAS Wkret-met EWI fasteners have all required BBA certification (UKTA).

Company meets the highest European standards and meets the requirements of producers of complete EWI / ETICS insulation systems, as well as the expectations of designers and contractors.

Wide offer of fasteners for polystyrene foam and mineral wool in EWI ensures solid fastening. Among them is the highest in technical / usage performances ThermoDrive V2.



Key features

- UKTA (BBA) for different 8 EWI / ETICS fasteners
- Very high plate stiffness 1kN/mm (pull-through capacity)
- Very low point thermal conductivity coefficient 1mW/k
- The highest pull-out capacity in all substrates categ. 1,5kN



VIEW FULL PROFILE ON THE INCA DIRECTORY



+48 539192040



p.polak@wkret-met.com



en.klimas.com



KLIMAS

FASTENER TECHNOLOGIES



EUROPEAN MANUFACTURER OF FASTENING TECHNIQUES





Innovative fixing solutions for external wall insulation

Swifix provides innovative fixing solutions for external wall insulation (EWI). Engineered for secure, load bearing attachments without compromising insulation performance.

Swifix products combine strength, durability, and thermal efficiency. Ideal for new-build projects or retrofit applications, they streamline installation, save time on site, and meet all relevant industry standards.

Trusted for quality, reliability, and sustainability, Swifix enables safer, stronger façades while supporting energy efficient, long lasting buildings that perform exceptionally in modern construction.



Key features

- Precision engineered fittings for external wall insulation
- Easy, fast installation with reliable performance
- Strength and durability built into every product
- Supports sustainable, energy efficient building façades



VIEW FULL PROFILE ON THE INCA DIRECTORY



01884 211540



info@swifix.co.uk



www.swifix.co.uk



DECORATIVE FINISHES



Leading manufacturer of bricks, blocks, precast concrete and brick slip façades

Forterra is home to long-standing iconic brands such as London Brick, Butterley, and Thermalite, as well as trusted brands including Bison Precast, Cradley, and Red Bank.

Omnia Façades by Forterra is shaping the future of brick slips and façade systems as the first major brick manufacturer to produce precision-engineered extruded brick slips locally and at scale.

Designed to support Modern Methods of Construction (MMC), Omnia represents Forterra's commitment to the future, helping you build smarter, faster, and more efficiently.



Key features

- Technical and design expertise support from specification to installation
- Decades of brickmaking with proven experience in extruded wirecut bricks
- Locally-sourced and locally-made, our products are proudly Made in Britain
- UK production ensures a reliable supply chain with minimal lead times



VIEW FULL PROFILE ON THE INCA DIRECTORY



01773 600211



slips@forterra.co.uk



www.forterra.co.uk

OMNIA
FORTERRA

SHAPING THE FUTURE OF BRICK FAÇADES

www.omniafacades.co.uk

- Precision-engineered to reduce waste and ideal for MMC and EWI projects
- Versatile range of colours and textures to fit a wide variety of design aesthetics
- UK-based manufacturing provides a consistent and reliable supply chain
- Lightweight brick slips designed for ease of handling and installation
- Authentic clay brick slips, naturally non-combustible and A1 fire rated
- Supported by Forterra, a trusted brand with extensive industry experience

DECORATIVE FINISHES



Market leaders in bagged aggregates, renders, and building trade supplies

Scotland's leading specialists in bagging and packaging aggregates and renders for the building trade. Using the latest automated pre-packing technology, Stonepack provides consistently high-quality products and delivery service second to none. We offer a wide range of prepacked through colour cement renders for all construction sectors, manufactured using computer-controlled state of the art plant, pigments, additives and polymer content for precise, consistent batches. Ideal for all buildings, we offer a wide range of colours, and a full specification and sample service to architects and other trade professionals.

Official Baumit distributor for Scotland.



Key features

- Specialist in bagged aggregates and renders
- Advanced automated pre-packing and quality control
- Wide product range and services
- Strong industry support and delivery service



VIEW FULL
PROFILE ON THE
INCA DIRECTORY



01307 462510



ewi@stonepack.co.uk



www.stonepack.co.uk



A leading Scottish supplier of high-quality harling chips, renders, Baumit EWI systems, and specialist rendering and plastering products.

Authorised Baumit Distributor
Stonepack Ltd
www.stonepack.co.uk
01307 462 510



SERVICE PROVIDERS



Independent technical assurance for retrofit, EWI and facade systems

With extensive experience across EWI, cladding and whole-house fabric upgrades, we help installers, contractors and clients manage quality, compliance and performance risk. Our services include Retrofit Coordination, independent third-party inspections, high-rise QA and compliance inspections, proof testing, thermography, thermal modelling and PSI analysis, drone surveying and photogrammetry, certified passive fire system inspection, and damp and moisture investigation.

We bring practical site knowledge together with technical assurance to support compliant delivery, identify defects early, and improve outcomes across retrofit and external wall projects.



Key features

- Independent third-party auditing, high-rise QA and compliance inspections
- Retrofit services, damp and mould
- Pull-out testing, thermal modelling and PSI analysis
- Drone surveying and photogrammetry



VIEW FULL PROFILE ON THE INCA DIRECTORY



01379 415514



enquiries@2ctc.co.uk



www.2ctc.co.uk





Proving performance and compliance for façade and building envelope products

Kiwa Building Products provides independent inspection and certification for building envelope materials and systems, giving manufacturers trusted evidence of performance, safety and compliance.

Our Kiwa Agrément service evaluates products such as façades, cladding, insulation and roofing systems to confirm durability, fitness for purpose and alignment with UK and Irish regulatory requirements.

We also offer installer assessment schemes and Clone Agréments, helping clients raise installation quality, reduce risk and accelerate market access.



Key features

- Independent Kiwa Agrément for building envelope products
- Installer assessment schemes to ensure quality installation
- Impartial assessment that strengthens product credibility
- Trusted evidence for UK and Irish compliance and market access



VIEW FULL PROFILE ON THE INCA DIRECTORY



+44 (0)1332 977829



uk.construction@kiwa.com



www.kiwa.co.uk



TRAINING PARTNERS



Not for profit consortium providing procurement solutions for social housing sector

The Real Green Skills Accelerator developed by Efficiency North (EN) is an entry into the EWI sector training programme.

EN has enabled a complex project management to bring together Leeds City Council, its contractor, Equans and Hamilton, Wetherby, Jewsons, Leeds College of Building, West Yorkshire Combined Authority; a specialist mentoring organisation and the DWP.

The 6-week course comprises 2 days practical classroom and 3 days working on site applying EWI skills from cradle to grave. Jobs in the industry are sought following completion. 5 learners from the first 2 cohorts have been offered jobs in the supply chain.



Key features

- An entry to construction
- EWI focused training course
- Blended classroom and on-site training
- Guaranteed job interview at end of programme and possible jobs (where they exist)



[VIEW WEBSITE](#)



07884 589 122



Simeon.perry@efficiencynorth.org



www.efficiencynorth.org



TRAINING PARTNERS



**SUPPORT
for success**
Green Skills Training And Consultancy

Accredited, recognised and trusted qualifications within retrofit

Support for Success delivers high quality green skills training to empower individuals and organisations.

Focused on upskilling, employability, and practical expertise, the courses equip learners with the knowledge and confidence to excel in retrofit industries.

From Experienced Worker routes to short courses, Support for Success combines professional guidance, real world experience, and ongoing guidance to support the long term development of a skilled workforce, capable of driving the UK's sustainable construction and retrofit agenda.



Key features

- Supporting both the existing workforce and emerging talent
- Courses are technically accurate and reflective of current best practice
- Specialising in insulation and building treatments
- Delivered on-site and at local venues throughout the UK



VIEW FULL
PROFILE ON THE
INCA DIRECTORY



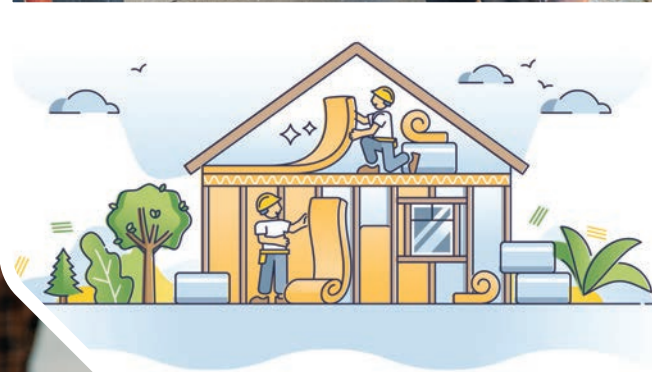
01884 211542



info@supportforsuccess.org



www.supportforsuccess.org



TRAINING PARTNERS

APEX Training

Powered by The Verdancy Group

Your training provider for EWI installer certification

The Verdancy Group delivers sustainability education, training, and consultancy across the UK. Apex Training, our training arm, delivers industry-accredited programmes aligned to recognised standards and certification pathways to build a skilled, compliant low carbon workforce.

Our market leading NOCN Level 3 NVQ Diploma in Insulation and Building Treatments, offers a fast track route for experienced installers to achieve certification, meet compliance requirements, and evidence competence in line with rising industry standards.



Key features

- Designed with industry to reflect on-site requirements
- Delivered flexibly across the UK, including at your premises
- Structured to minimise disruption to live projects
- Fast-track routes to formalise experience and gain qualifications



VIEW FULL
PROFILE ON THE
INCA DIRECTORY



01506 894 059



hello@theverdancygroup.com



www.theverdancygroup.com

APEX Training

Powered by The Verdancy Group

Gain your EWI Installer Certification

Partner with Apex Training to support your workforce across External Wall Insulation (EWI) and low carbon retrofit, ensuring certification, compliance, and alignment with industry standards.



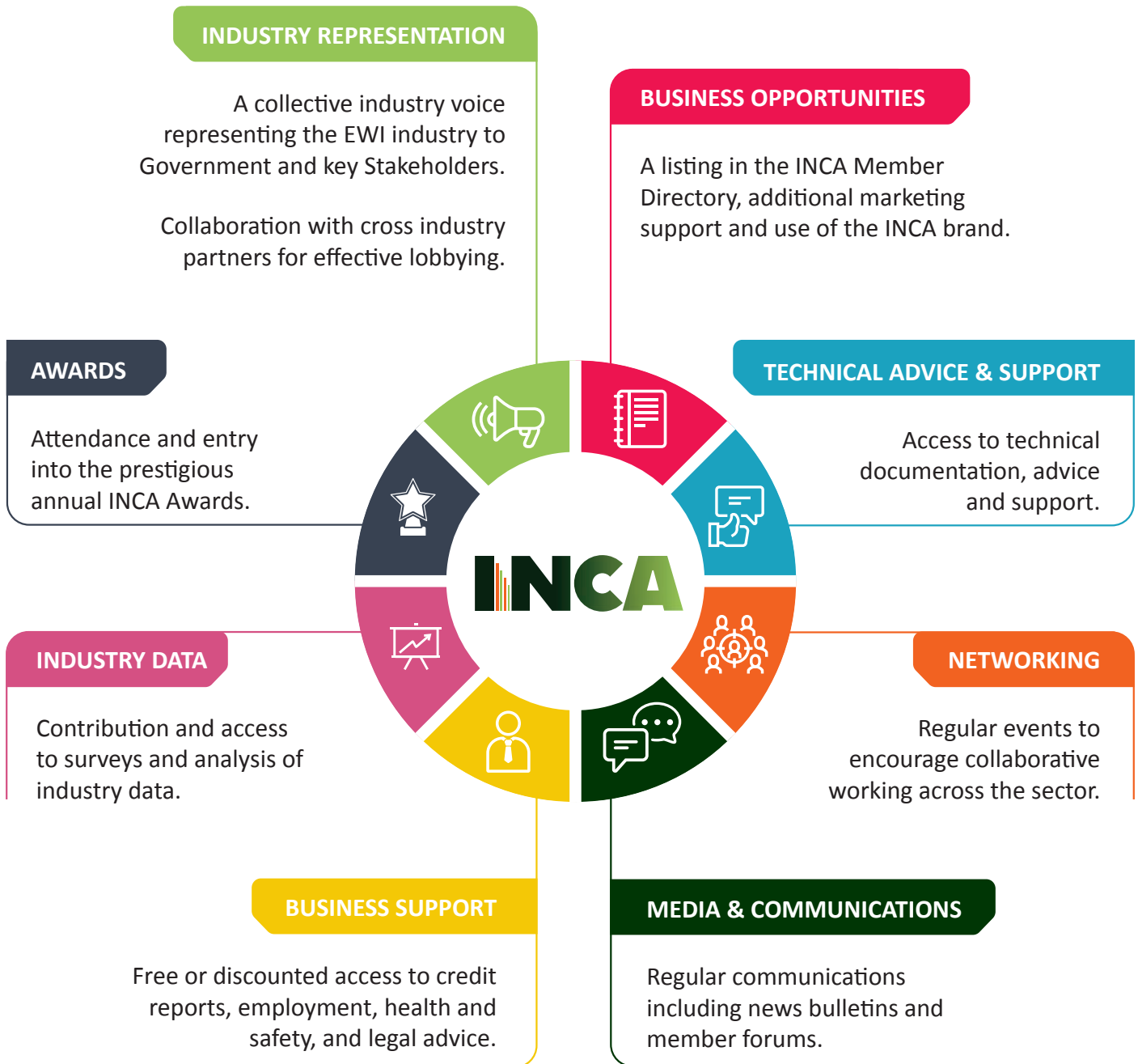
Scan the QR code
to find out more
about our course

Solar | Net Zero | Damp and Mould |
Domestic Retrofit



BENEFITS OF INCA MEMBERSHIP

Membership of INCA provides a wide range of benefits and support services to ensure that companies are uniquely placed to deliver the highest quality standards for their clients.



together STRONGER

Members Quick Reference

Discover our Associate Members and their solutions - connect, collaborate, and unlock new opportunities.

2CT Consultants Limited
01379 415514
enquiries@2ctc.co.uk
www.2ctc.co.uk

Bewi Insulation & Construction (UK) Ltd
0870 600 3666
sales.insulation.uk@bewi.com
www.bewi.com/uk

Efficiency North
07884 589 122
Simeon.perry@efficiencynorth.org
www.efficiencynorth.org/

EJOT UK Ltd
01977 687040
mnewell@ejot.com
www.ejot.co.uk

Euroform Products Ltd
01925 860999
sales@euroform.co.uk
www.euroform.co.uk

Forterra Building Products Ltd
01773 600211
slips@forterra.co.uk
www.forterra.co.uk

Kingspan Insulation Ltd
01544 388 601
info@kingspaninsulation.co.uk
www.kingspaninsulation.co.uk

Kiwa Building Products Ltd
+44 (0)1332 977829
uk.construction@kiwa.com
www.kiwa.co.uk

Klimas Wkręt-Met
+48 539192040
p.polak@wkret-met.com
https://en.klimas.com/

Knauf Insulation Ltd
07702 674 600
chris.rogers@knaufinsulation.com
knauf.com/en-GB/knauf-insulation

Panelcraft Access Panels
01827 720 830
sales@panelcraftaccesspanels.com
www.panelcraftaccesspanels.com

Protektor Group UK Ltd - WEMICO
01562 820123
sales@wemico.co.uk
www.protektor.co.uk

Steico UK Ltd
+44 (0) 1727 51 51 20
sales@steico.com
https://www.steico.com/uk

Stonepack Ltd
01307 462510
ewi@stonepack.co.uk
www.stonepack.co.uk

Support for Success
01884 211542
info@supportforsuccess.org
www.supportforsuccess.org

Swifix Ltd
01884 211540
info@swifix.co.uk
www.swifix.co.uk

Sysclad Manufacturing Ltd
01952 466 664
sales@sysclad.co.uk
www.sysclad.co.uk

The Verdancy Group
01236 567890
hello@theverdancygroup.com
www.theverdancygroup.com

Trueline Expanded Products Ltd
01562 823267
enquiries@truelineproducts.co.uk
www.truelineproducts.co.uk

Tel: 0330 124 6585

Email: info@inca-ltd.org.uk

Website: www.inca-ltd.org.uk

