



King Georges Close

Location

Rayleigh, Essex

Client

Moat Housing

Contractor

BTS Special Works

Main Contractor

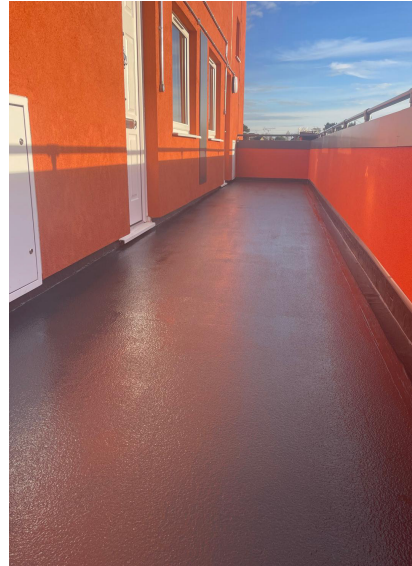
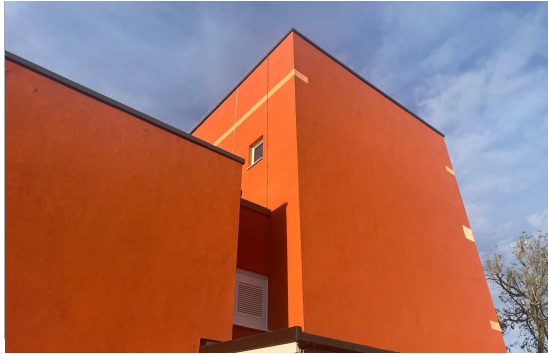
Morgan Sindall

Building Type

Residential

Completion

July 2022 - December 2023



King Georges Close

About this Project

BTS Special Works were appointed in July 2022 to complete repairs, treatments and EWI installation to the façade of 1-40 King Georges Close for Moat Housing.

During the initial surveys, the team identified the existing cavity wall ties were insufficient to take the weight of a new EWI system. We worked closely with the client to identify and agree the installation of Helifix Wall Tie system to support the new system.

To prepare the façade for the EWI installation, the current wall coatings were stripped and the concrete and brickwork were repaired to make good the surface. The new structural ties were then installed prior to the EWI installation.

Alongside these works, walkway repairs were also carried out and finished with new liquid coatings.

Works Summary

- Installation of Helifix Wall Ties.
- Coating removals with associated concrete and brick façade repairs.
- Application of protective coatings.
- External Wall Insulation.
- Liquid coatings to walkways.