



LEADING THE UK EWI INDUSTRY

AWARDS 2024

THURSDAY 7 NOVEMBER 2024

**A celebration of EWI innovation
and excellence**

**Winners
2024**

Our
charity
partner



[INCA-LTD.ORG.UK](https://inca-ltd.org.uk)

[#INCAAWARDS](https://twitter.com/INCAAWARDS)



TRUELINE

PRODUCTS

CELEBRATING 30 YEARS IN MANUFACTURING

“WE’VE GOT THE EDGE”

TRUELINE
LASER

TRUELINE
FABRICATIONS

TRUELINE
COPINGS

TRUELINE
EWI BEADS & PROFILES

Trueline Products are a leading UK manufacturer specialising in Bespoke Fabrications, Expanded Metal Products and Render Beads & Profiles for External Wall Insulation Render (EWI) and Facades. From design to development, we provided an innovative and quality service for the construction industry.

- Bespoke Architectural Fabrications
- Beads & Profiles for Render, Roughcast & EWI Systems
- Pressed Aluminium Trims
- New In-House Powder Coating Paint Line
- On Site Survey & Design Team

Roofline Closure Systems

Delivering PAS Compliant Solutions for External Wall Insulation

Introducing Trueline Roofline Closure Systems - working with system designers, warranty providers and governing agencies our innovative systems are designed to be an integral part of the new detailing required for PAS compliant projects.



Call +44 (0)1562 823267
✉ enquiries@truelineproducts.co.uk
www.truelineproducts.co.uk



Welcome

The INCA Awards recognise innovation and excellence in External Wall Insulation (EWI) projects delivered by members over the last year and acknowledge the importance of quality to the Association and all its members.

Across all sectors of the industry, all this year's finalists demonstrate the vital role for EWI in improving the energy efficiency of buildings, lifting households out of fuel poverty, and transforming local communities.

INCA is delighted to see the high standard of entries this year and we would like to share them with you in this year's winner's brochure.

Contents

- 4 New Build: Non-Residential
- 6 New Build: Residential - Low Rise
- 8 New Build: Residential - High Rise
- 10 Refurbishment: Non-Residential
- 12 Refurbishment: Low Rise - Render Finish
- 14 Refurbishment: Low Rise - Brick Effect Finish
- 16 Refurbishment: High Rise
- 18 Refurbishment: Mid Rise
- 20 Small Project of the Year
- 22 Judges Choice: Architectural Design
- 26 Judges Choice: Environmental Impact
- 29 Installer of the Year
- 30 Component Supplier of the Year
- 31 Outstanding Achievement Award

The Judges

Andrew Champ

Executive Director at SWIGA for 8 years and a 25+ year tenure at Rockwool. 2022 winner of the INCA Outstanding Achievement Award.

Gary Peacey

Owner of EWI Consultants Limited with over 25 years EWI industry experience with Marmorit, Knauf and Jub. Aids the INCA Technical Committee in the development of technical documentation and expert advice.

Mitch Gee

Independent EWI Consultant and former Chairman of INCA with over 30 years industry experience with SPS Envirowall and Rockwool. Existing Non-Executive Director of the INCA Board and Welsh Committee Chairman.

Taryn Davies

Group Sales Director with over 16 years' experience working for a EWI system manufacturer Dryvit. Represented INCA as a Board Director for 4 years.

Hazel Turner

Former INCA Company Secretary, INCA Board Director and owner of an EWI contracting business for over 10 years. In the industry for over 25 years in sales and technical roles at Sto UK and Rockwool Group and Sheffield Insulations.

Adrian Clark

Independent building products consultant, specialising in fire protection and insulation material projects. 35+ years' industry experience with Rockwool.

New Build: Non-Residential

Category for new build non-residential projects incorporating a full EWI system with a render, traditional or brick slip / brick effect finish.

Category sponsor



Shortlist

- > **Bourne Business Park** – K Systems
- > **Campion School** – Rendserve
- > **Kenilworth School** – Rendserve
- > **Maldron Hotel** – SPS Envirowall
- > **Oak Grange School** – Wetherby Building Systems & Rendserve

Scan me to see the projects



Hayloft Point,
London



PIC Construction Group



PIC Construction Group Ltd was established in April 2009 and is one of the UK's most experienced building contractors. We work in all sectors not limited to but including the commercial, residential and hospitality in both the private and public sectors. We act as the Main Contractor but also undertake work as a sub-contractor.

The founder of PIC Construction Group Ltd (Ion Pendus) was inspired to form the company to provide a service like no other contractor currently within the industry, providing an innovative, knowledgeable, dynamic and effective service whilst always trying to exceed the Client's expectations.



Hove Gardens,
Brighton



Cortland Broad St,
Birmingham



Unite Students,
Bromley place,
Nottingham



JUBILEE HOUSE, 3 THE DRIVE, GREAT WARLEY, BRENTWOOD, CM13 3FR, TEL: 01277725120, Email: info@picgrp.co.uk

Winning Project



Oak Grange Primary & Nursery School, Derby

“A great example of alternative construction methods incorporating a wider story around energy efficiency and sustainability with a strong focus on carbon impact.”

System Designer:
Wetherby Building Systems Ltd



Installer:
Rendserve Ltd



Scan me
to see the
full project
details



New Build: Residential - Low Rise

Category for new build low rise residential projects incorporating a full EWI system with a render, traditional or brick slip / brick effect finish.

Category sponsor



Shortlist

- > **Bull Bridge Mead** – Wetherby Building Systems & TLS Construct (SW)
- > **Silverstone Escapade** – PPG Architectural Coatings
- > **Curries Yard** – K Systems
- > **The Tides, Portrush** – Saint-Gobain Weber

Scan me to see the projects



SOLTHERM

Systems for a Sustainable Future

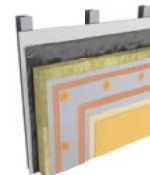
► Endurance 75



► Ultimate A1



► Ultimate Steel



SCAN QR CODE

01908 533 444
www.soltherm.co.uk

- ⚙ Innovative systems to the highest sustainable standards
- ⚙ Carbon Optimised Innovation - Eco Uplift [25%]
- ⚙ Best in Class A1 Fire Rating
- ⚙ Extended 75 Year Life
- ⚙ European technological leader in ETICS
- ⚙ Committed to creating cohesive communities

Winning Project



Bull Bridge Mead, Modular Homes

"Great example of modular construction showing how well EWI is suited to this type of low-cost fast track housing which the nation desperately needs."

System Designer:
Wetherby Building Systems Ltd



Installer:
TLS Construct South-West Ltd



Scan me
to see the
full project
details



New Build: Residential - High Rise

Category for new build high rise residential projects incorporating a full EWI system with a render, traditional or brick slip / brick effect finish.

Category sponsor



Shortlist

- > **Hove Gardens** – Aliva UK & PIC Construction
- > **Trapezium** – Aliva UK & Hamilton (Building Contractors)
- > **Cortland Broad Street** – Aliva UK & PIC Construction
- > **Ironworks** – alsecco UK
- > **Morriss House** – Aliva UK
- > **Victoria House** – alsecco UK & Complete Wall Solutions

Scan me
to see the
projects



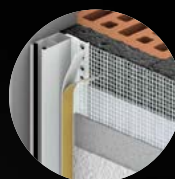
Bringing it together

EJOT®

**Introducing EJOT Pro-Line.
One innovator. One supply source.
Infinite design advantages.**



Pro-Line profiles enable precise edge formation in EWI façades.



Pro-Line profiles provide durability with reduced thermal bridging.



**MORE
THAN JUST
PROFILES**



Find out more:
www.ejot.co.uk
01977 687040
SalesUK@ejot.com

Uniquely positioned as innovators of anchoring solutions, it was a natural progression to utilise our manufacturing expertise to develop a range of wall Profiles specifically for EWI systems. The EJOT Pro-Line range offers system designers a variety of premium products that create precise edge formation, drive rain from the structure, and deliver improved durability with significantly reduced thermal bridging. **EJOT Pro-Line. More than just profiles!**

Winning Project



Cortland Broad Street, Birmingham

“A truly stunning, design focussed flagship development incorporating expertly installed chamfered reveals and angled brickwork to dramatically enhance the visual depth of the external fabric.”

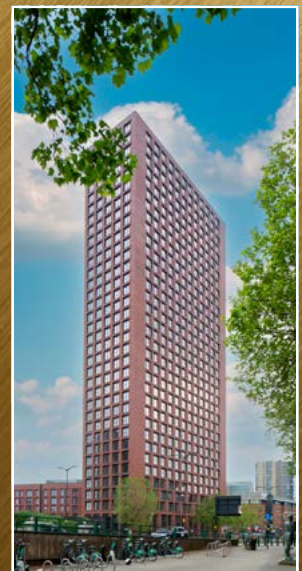
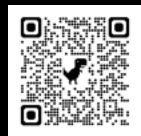
System Designer:
Aliva UK Ltd



Installer:
PIC Construction Group Ltd



Scan me
to see the
full project
details



Refurbishment: Non-Residential

Refurbishment category for non-residential projects incorporating a full EWI system with a render, traditional or brick slip / brick effect finish.

Category sponsor



Shortlist

- > **Pembroke Dock** – Sto
- > **Livingstone Academy** – Wetherby Building Systems

Scan me
to see the
projects



PROUD WINNERS OF LAST YEAR'S BRICK FINISH HIGH RISE AND ARCHITECTURAL DESIGN AWARDS.

Awarded for Cluny Mews, a project with the facade completed entirely in the Ecomin 400 system using clay, ceramic and stone slips.

We are delighted to support INCA in the 2024 Awards.



[ALSECCO.CO.UK](https://www.alsecco.co.uk)



Winning Project



Pembroke Dock Hangar Buildings

“High quality of workmanship and good use of colour, deco profiles and architectural detailing have completely transformed the facade of this industrial building.”

System Designer:

Designer: Sto Ltd



Scan me
to see the
full project
details



Refurbishment: Low Rise - Render Finish

Refurbishment category for low rise projects incorporating a full EWI system with a render / traditional finish.

Category sponsor



Shortlist

- > **Thomas Row** – SPS Envirowall & SERS
- > **MOD Rock Park** – Wetherby Building Systems & PD&CL Building Services
- > **Walker SHDF** – K Systems & Sykes Specialist Contracting
- > **Mayhill, Swansea** – Sika
- > **The Meadows** – P J Mear
- > **Waterloo Road, Southport** - Soltherm

Scan me
to see the
projects



TRUETRIMS

BUILDING PRODUCTS

TrueTrims offers two ranges of high-quality aluminium trims, specifically designed to work with the leading brands of weatherboard cladding systems and accessories. Manufactured, powder-coated, and packaged at our Kidderminster plant, we ensure top-tier quality from production to delivery.

- Cost savings – Buy direct from us, the manufacturer
- Quick lead times – 24-hour manufacturing & in-house powder coating
- Quality assured – Minimal damages with our own fleet of flatbed delivery vehicles
- Perfect condition – Protective film-wrapped trims for extra care

Get in touch with us today and experience the TrueTrims difference!

CONTACT US

- Head Office: 01562 823267
- Scotland Office: 01698 252942
- paul.m@truelineproducts.co.uk
- www.truelineproducts.co.uk



www.truelineproducts.co.uk | TrueTrims © | Pressed Aluminium Trims

Winning Project



The Meadows Estate, Hounslow

“An incredible total transformation with good future proofing - looks clean and modern with an exceptional U-value.”

Installer:
P J Mear Ltd



Scan me
to see the
full project
details



Before



After



Refurbishment: Low Rise - Brick Effect Finish

Refurbishment category for low rise projects incorporating a full EWI system with a brick slip / brick effect finish.

Category sponsor



Shortlist

- > **Citizen HA** – Structherm & Westdale Midlands
- > **Orbit Housing** – Structherm & SERS & Aspiration Group
- > **Mount Pleasant** – Saint-Gobain Weber & P J Mear
- > **1 Clare Road** – Structherm
- > **E.ON SHDF Project** – Sto
- > **Nottingham DZ2** - Soltherm

Scan me to see the projects



Ensure PAS compliant Roofline Closures

Ensuring PAS compliance at roofline closures is complex and challenging for both system designers and installers.

Protektor Wemico has engaged with industry governing bodies and warranty providers to help design a series of PAS-compliant roof closure solutions.



PAS compliant



Cost effective



Quick to install



25 year life



Thermal protection

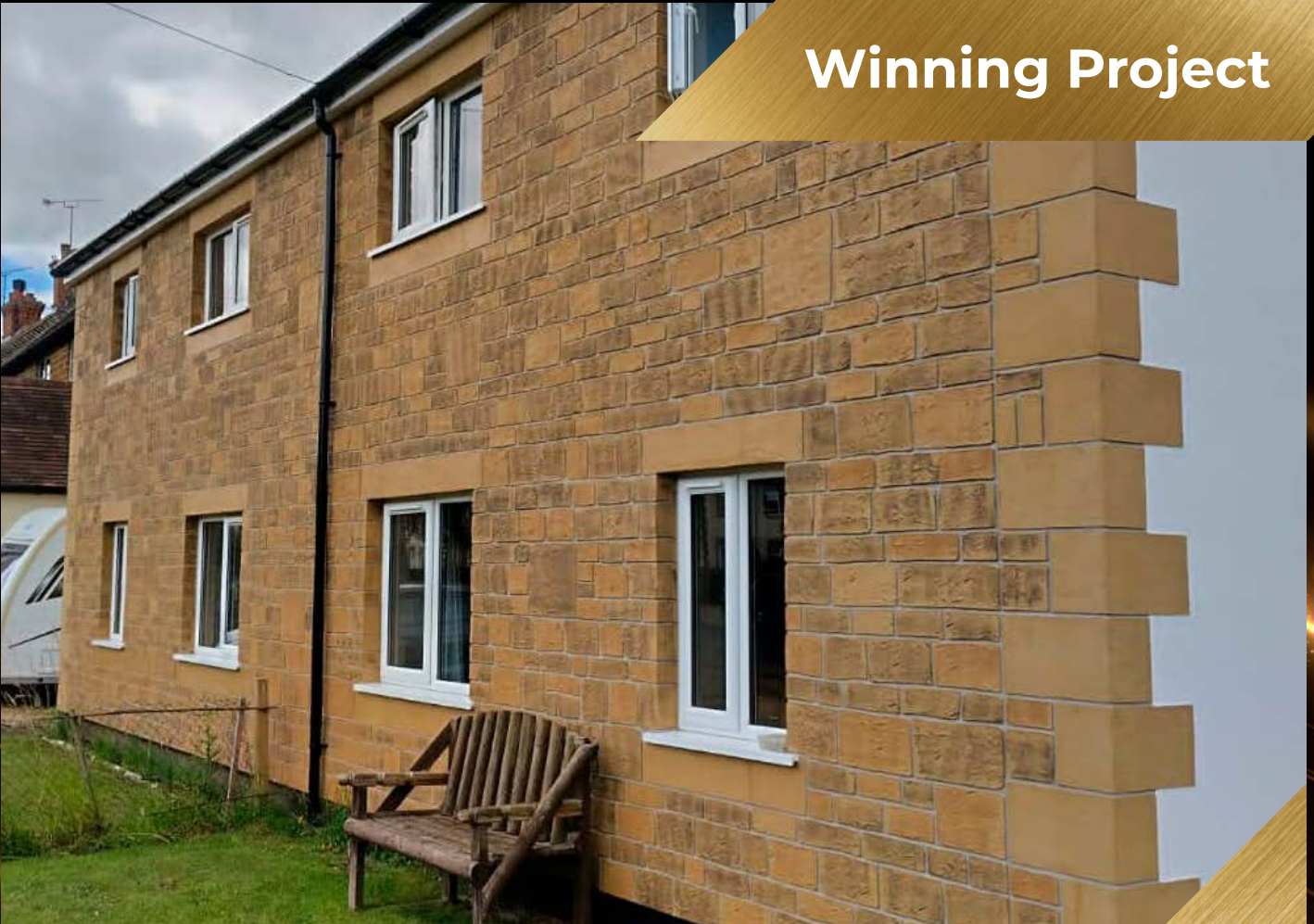


Secure and robust

Download our PAS Roofline Closure Specification Guide
Visit www.wemico.com/pas



Winning Project



Orbit Housing Association Retrofit Scheme

“Greatly enhanced but retained a traditional appearance through the unusual stone effect finish - another great example of EWI being used to create an aesthetically pleasing, well insulated and sustainable project.”

System Designer:
Structherm Ltd



Installer 1:
**SERS Energy
Solutions Group Ltd**



Installer 2:
**Aspiration
Group**



Scan me
to see the
full project
details



Refurbishment: High Rise

Refurbishment category for high rise projects incorporating a full EWI system with any form of render, traditional, brick slip or brick effect finish.

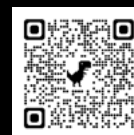
Category sponsor



Shortlist

- > **Henry Wood House** – Sto & Chiltern Contracts
- > **Charrington Court** – Wetherby Building Systems & M K Facades
- > **Ropeworks** – Soltherm & Guildmore
- > **Boardwalk** – alsecco UK
- > **Watmos Walsall** – Soltherm
- > **Pierhead Lock** – Sto
- > **Oceans Wharf** – Sto
- > **Gary Court** - Wetherby Building Systems & Hamilton (Building Contractors)

Scan me
to see the
projects



The right façade choice
for your project

Our **External Wall Insulation Systems** can work with
a variety of construction techniques!



Charrington Court, Essex

Bull Bridge Mead, Halstock

Wetherby Building Systems Ltd | wbs-ltd.co.uk | 01942 717100

Winning Project



Boardwalk, East Sussex

“The strikingly vibrant yellow and white finish enhances the buildings visual appeal, perfectly complementing its harborside location in Eastbourne.”

System Designer:
alsecco UK Ltd



Scan me
to see the
full project
details



Refurbishment: Mid Rise

Refurbishment category for mid rise projects incorporating a full EWI system with any form of render, traditional, brick slip or brick effect finish.

Category sponsor



Shortlist

- > **Belsize Grove** – Soltherm
- > **Kingswood Estate** – Soltherm & P J Mear
- > **Eyewitness Works** – Rendserve
- > **Wester Common Road** – K Systems & Ailsa Building Contractors

Scan me
to see the
projects



BuildX are based in Plymouth with an operational area covering the South West UK. We are a contractor specialising in commercial and domestic refurbishment projects, external render systems, external wall insulation, cladding rectification, painting and decorating.

[Scan the QR Code](#) to find out more!



visit us online at www.buildxsw.co.uk | contact us at hello@buildxsw.co.uk | 01752 546525



Winning Project



Kingswood Estate, Dulwich

“Large scale transformation with a high level of consistency, good finish and a mix of materials that blend well – excellent project and stunning transformation.”

System Designer:
Soltherm External Insulations Ltd



Installer:
P J Mear Ltd



Scan me
to see the
full project
details



Small Project of the Year

Category for small projects of 300sqm or less which incorporate a full EWI system with any form of render, traditional, brick slip or brick effect finish.

Category sponsor



Shortlist

- > **Tregwilym** – Structherm & Joyner Group
- > **Eyewitness Works** – Rendserve
- > **1 Clare Road** – Structherm

Scan me
to see the
projects







THE MARKET LEADING EXPERTS IN THE EXTERNAL REFURBISHMENT OF NON - TRADITIONAL, LOW & HIGH RISE SOCIAL HOUSING MARKET

We offer BBA/KIWA approved and PAS2035 compliant EWI solutions including our unique Structural External Wall Insulation (SEWI) used for hard to treat properties where a standard EWI system would not be suitable.

Paired with our innovative RoofLine, ThermaBase and ArtBrick solutions, properties benefit from improved thermal performance, and aesthetic qualities which will considerably extend the lifespan of the building and significantly reduce energy bills for years to come.

GET IN TOUCH TO FIND OUT MORE

 01484 850098  www.structherm.co.uk

 info@structherm.co.uk



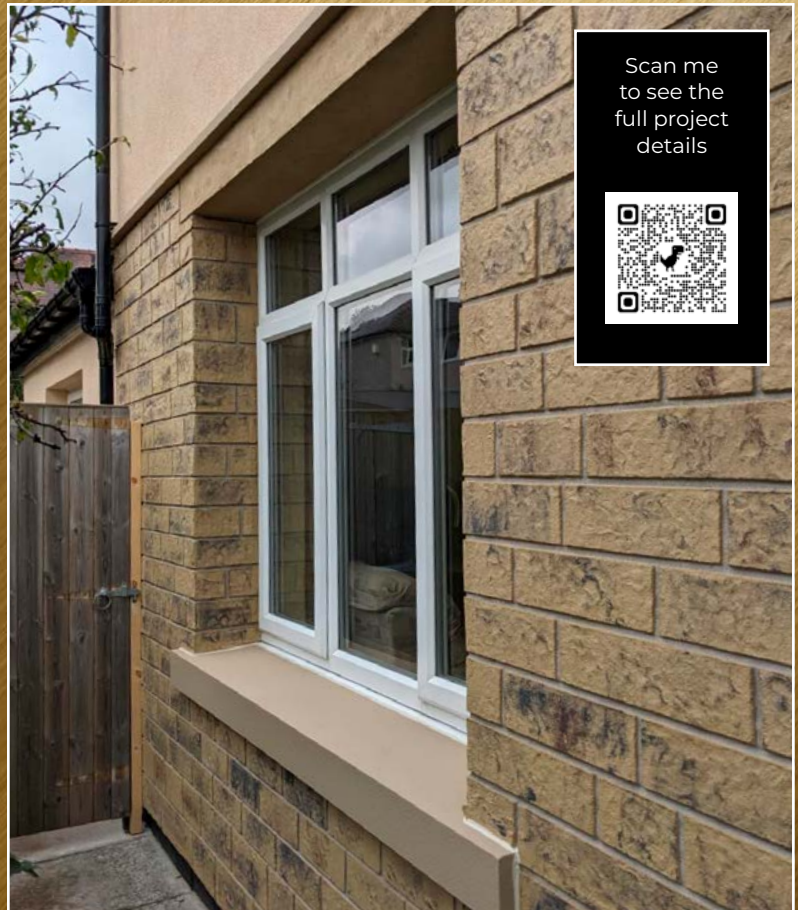
Winning Project



1 Clare Road, Mytholmroyd

“Seamless transition with the various finishes complimenting each other perfectly. Cleverly executed with attractive cill and reveal detailing.”

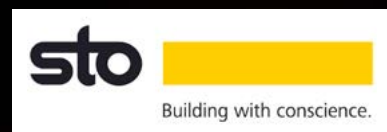
System Designer:
Structherm Ltd



Judges Choice: Architectural Design

Selected by the judging panel in recognition of how EWI systems and finishes can be designed and installed to exceptional architectural standards.

Category sponsor



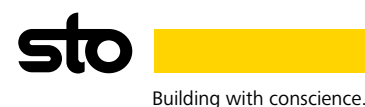
Shortlist – High Rise

- > **Ironworks** – alsecco UK
- > **Morriss House** – Aliva UK
- > **Kenilworth School** – Rendserve
- > **Cortland Board Street** – Aliva UK & PIC Construction Group
- > **Victoria House** – alsecco UK & Complete Wall Solutions
- > **Boardwalk** – alsecco UK

Shortlist – Low Rise

- > **Silverstone Escapade** – PPG Architectural Coatings UK
- > **The Meadows** – P J Mear
- > **Waterloo Road** – Soltherm

Scan me
to see the
projects



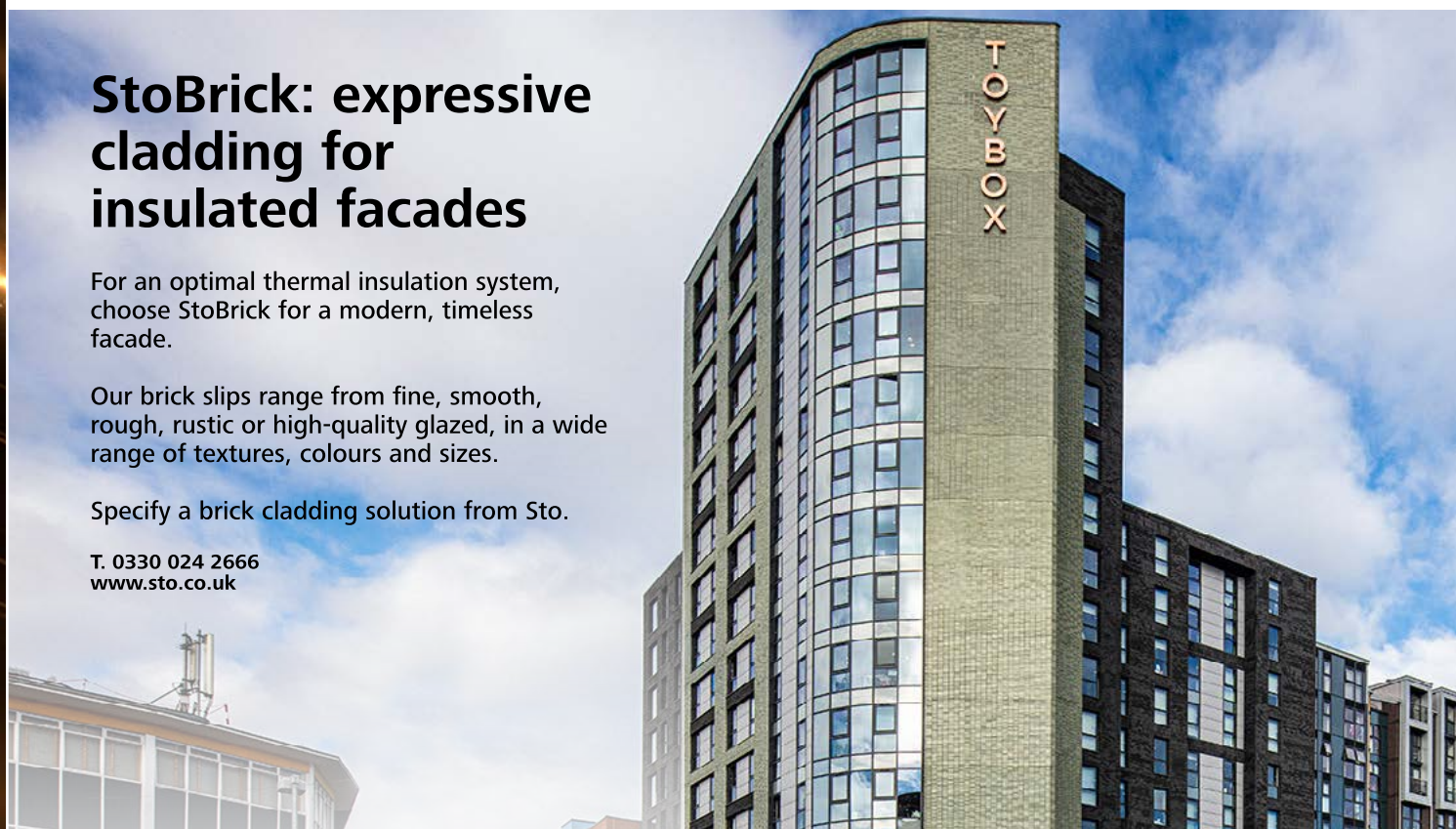
StoBrick: expressive cladding for insulated facades

For an optimal thermal insulation system, choose StoBrick for a modern, timeless facade.

Our brick slips range from fine, smooth, rough, rustic or high-quality glazed, in a wide range of textures, colours and sizes.

Specify a brick cladding solution from Sto.

T. 0330 024 2666
www.sto.co.uk



Winning Project

**Judges Choice:
Architectural Design – High Rise**



Victoria House, Manchester

“An architectural masterpiece with great angles and complex detailing making Victoria House a worthy winner in this category.”

System Designer:
alsecco UK Ltd



Installer:
Complete Wall Solutions Ltd



Scan me
to see the
full project
details



Winning Project

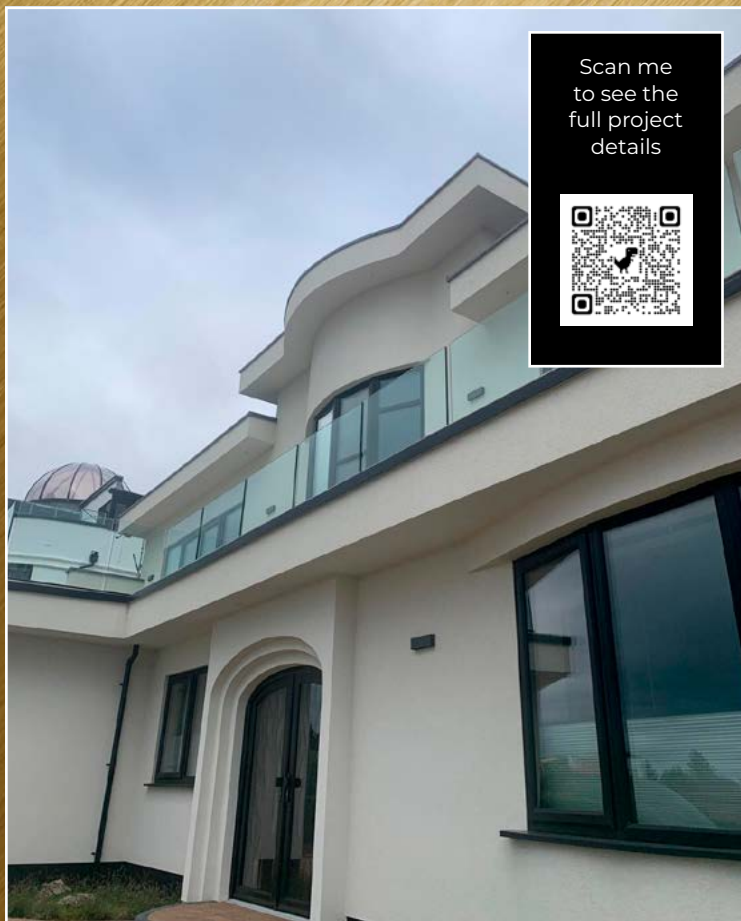
**Judges Choice:
Architectural Design – Low Rise**



Waterloo Road, Southport

**“Superb energy efficiency
coupled with aspirational art
deco aesthetics makes this
project a worthy winner.”**

System Designer:
**Soltherm External
Insulations Ltd**



YOUR EXTERNAL WALL INSULATION SOLUTION PROVIDER



SIKA.CO.UK/BUILDINGFINISHING

BUILDING TRUST



Judges Choice: Environmental Impact

Chosen by the judging panel in recognition of exceptional environmental impact (social or economic) as a result of incorporating EWI into new build or refurbishment projects

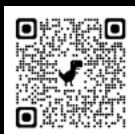
Category sponsor



Shortlist – High Rise

- > **Morriss House** – Aliva UK
- > **Belsize Grove** – Soltherm
- > **Watmos Walsall** – Soltherm
- > **Vivian House** – SPS Envirowall & SERS

Scan me
to see the
projects



Shortlist – Low Rise

- > **Nottingham DZ2** – Soltherm
- > **Curries Yard** – K Systems
- > **Waterloo Road, Southport** – Soltherm
- > **Oak Grange School** – Wetherby Building Systems & Rendserve
- > **Orbit Housing** – Structherm & SERS & Aspiration Group
- > **The Meadows** – P J Mear

Total Rendering Solutions



Lonsdale Chambers, Lonsdale Street,
Stoke-on-Trent, Staffordshire ST4 4BT
spsenvirowall.co.uk

sps|envirowall



Winning Project

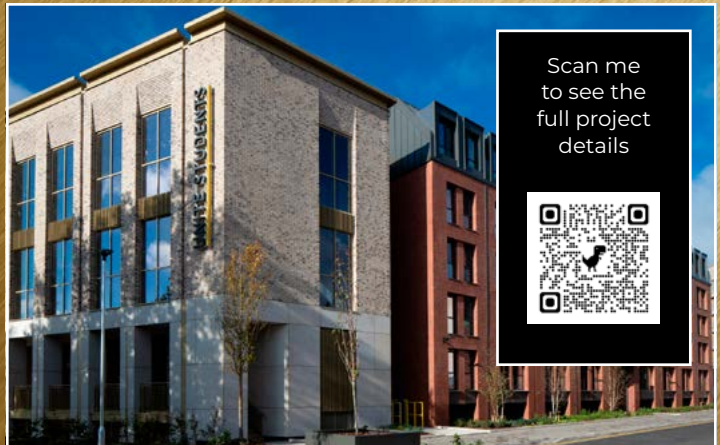
**Judges Choice:
Environmental Impact – High Rise**



Morriss House, Nottingham

“Ultra low u-value sustainable construction without compromise on complex design incorporating brick slips that save significant amounts of energy in production.”

System Designer:
Aliva UK Ltd



Winning Project

Judges Choice: Environmental Impact – Low Rise: New Build

Curries Yard, Dumfries and Galloway

“Environmentally this project scores highly ... a fabric first approach, enhanced u values, reduction in thermal bridges and air tightness makes it a worthy winner.”

System Designer:
K Systems



Winning Project

Judges Choice: Environmental Impact – Low Rise: Refurbishment

The Meadows Estate, Hounslow

“A very thoughtful holistic approach to this stunning project - the near Passivhaus criteria ensured that every EWI benefit was considered and implemented.”

Installer:
P J Mear Ltd



Winner

Installer of the Year

As voted for by INCA System Designer and Associate members

Category sponsor



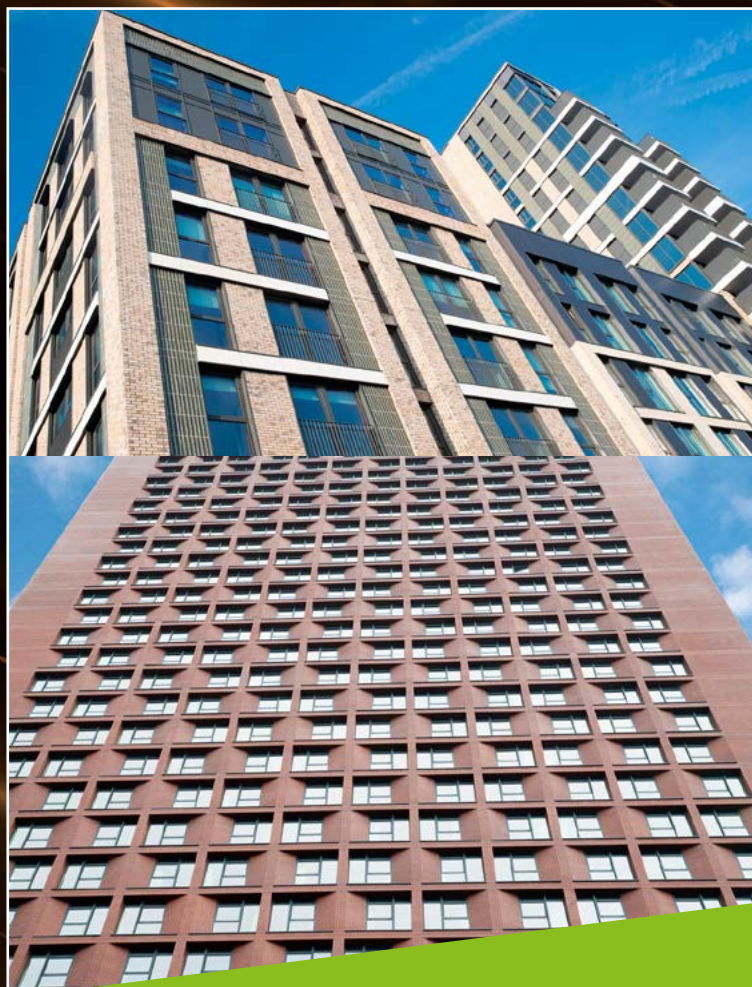
P J Mear Ltd

Highest ratings for workmanship, training, communications, client satisfaction, commitment to health and safety, all-round business acumen and shortlisted for no less than 5 INCA Awards in 2024!

“P J Mear can always be relied on to deliver the highest standard of workmanship and an exceptional customer experience – a worthy winner indeed.”



PJMear



Aliva UK's A1 fire rated EWI and brick slip systems are creating statement aesthetics and contributing to sustainability credentials on projects spanning the UK.

Meeting design intent without compromise and creating thermal efficiency in terms of U-Values means Aliva's slip systems available in a range of colours, textures and sizes are realising architectural vision and contributing to the Net Zero Carbon agenda.

Aliva's Termok8 EWI palette includes a comprehensive pastel series alongside a range of 400 plus colours including vibrant tones in our Rivetone Strong range and Rivetone Reflect, darker shades with solar reflective properties. Aliva can bespoke colour match and match NCS and RAL colours.



termok8®

www.alivauk.com

The Smithy, Fidlers Lane, East Ilsley, Berkshire, RG20 7LG

T: 01183 240 130 • enquiries@gruppovoivas.co.uk



AlivaUK



@AlivaUK



@Aliva UK

Winner

Component Supplier of the Year

Voted on and rated for customer service, reliability, communications, product range, innovation and site / project support by INCA system designers and contractor members.

Category sponsor



Protektor Group UK - WEMICO

Well deserved winners after coming close in previous recent years.

“Always willing to go the extra mile”.

“Great product range and service”.

“A trusted partner”.

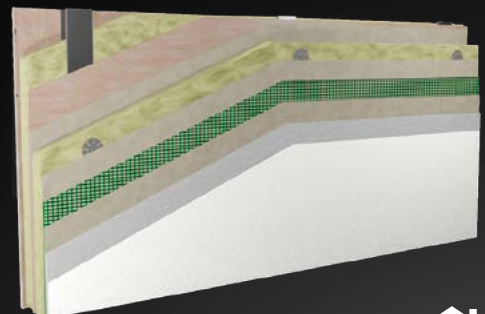


Peak Performance No Compromise



Direct Fix

A KIWA certified Direct Fix system offering the widest range of finishes available on the market.



Contact our team
on 01744 353 005 or info@k.systems

Winner

Outstanding Achievement Award

Derek Horrocks

Category sponsor



Derek needs very little in the way of introduction having been such a major figure in the industry for so many years in his various high-profile roles including (amongst others):

- Owner and Chairperson of Permarock Products Ltd - a UK based manufacturer, system designer and distributor of External Wall Insulation systems since 1978.
- Chairperson and owner of Sustainable Building Services (UK) Ltd - a fast growing, major nationwide turnkey solutions provider in the decarbonisation of homes sector with 45 years experience specialising in energy efficiency, low carbon heating and micro regeneration retrofits to the social, private and private rented sectors on a large scale.
- Chairperson of the National Insulation Association - a trade body for the wider insulation industry representing members that provide fully accredited and professionally installed insulation solutions to the domestic and commercial UK market.
- Chairperson and founder of the recently formed National Home Decarbonisation Group (NHDG) - an initiative bringing together around 25 of the largest Tier 1 contractors and Energy Suppliers in the UK delivering home decarbonisation at scale.



This year Derek was awarded the Climate Champion of the Year at the Net Zero Awards, he was made a Founding Life Fellow at the Retrofit Academy and he now can justifiably boast an INCA Outstanding Achievement Award. Congratulations Derek – very well deserved.



Creating trust, driving progress



The BDA Agrément®

We are Kiwa, a world leader in **Testing, Inspection and Certification** services (TIC), operating internationally across a wide variety of markets from gas and water to fire safety and construction. The BDA Agrément® process is designed to underpin the "safety and fitness for purpose" of products designed for the UK construction market.

Kiwa Building Products

We issue the BDA Agrément® for building envelope products and systems. Contact the Building Products team to discuss any requirements you may have.

Kiwa Building Products

Unit 5, Prime Enterprise Park,
Prime Parkway, Derby,
DE1 3QB, UK

+44 (0)1332 977829
uk.bpenquiries@kiwa.com
www.kiwa.co.uk/bda

Thank you to our Sponsors

INCA
LEADING THE UK EWI INDUSTRY
AWARDS 2024



Aspiration
group



Join INCA and enjoy these membership benefits

- 1 Industry Representation
- 2 Business Opportunities
- 3 Technical Advice & Support
- 4 Networking
- 5 Industry Data
- 6 Media & Communications
- 7 Business Support
- 8 INCA Awards

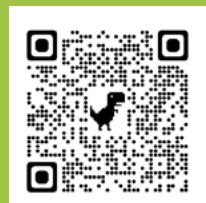
INCA

Join INCA today
Representing the
UK EWI Industry

T: 0330 1246585

E: info@inca-ltd.org.uk

W: www.inca-ltd.org.uk



INCA-LTD.ORG.UK

#INCAAWARDS