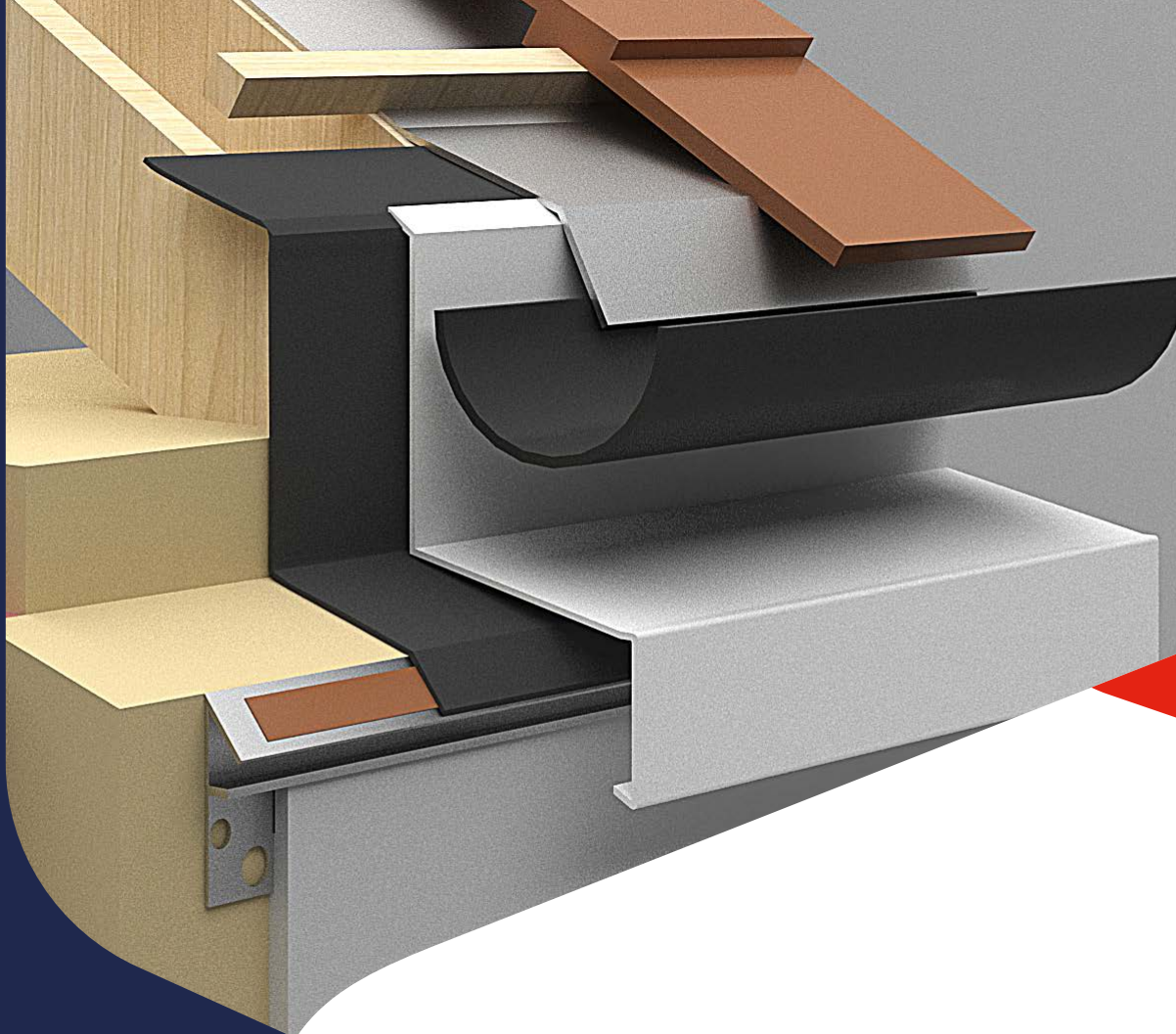


August 2024



www.wemico.com

PAS Roofline Closure Specification Guide



Contents

| | |
|----|---------------------------------------|
| 3 | PAS Roofline - Compliant Design |
| 4 | Roof Extension Trim (771) |
| 5 | Gable Solution (771) |
| 6 | Grind in Trim (781) |
| 7 | Upstand Trim (791) |
| 8 | Gutter Trim (801) |
| 9 | Gutter Trim Corner Section (801) |
| 10 | Transition Trim (722) |
| 11 | Grind in Cover Flashing (701) |
| 12 | Insulated Soil Pipe Flashing (TPSP) |
| 13 | Rainwater Downpipe Box |
| 14 | Metal Membrane (977) |
| 15 | Weatherproof Membrane |
| 16 | Connection Profiles (37207 and 37214) |
| 17 | Apex |
| 18 | End Caps |
| 19 | DPC Profiles |
| 20 | Thermo-Pro Flash (TPFL) |
| 21 | Customised Ancillaries |
| 22 | The Principles |

PAS Roofline - Compliant Design



Ensuring PAS compliance at roofline closures is complex and challenging for both system designers and installers.



Protektor Wemico has engaged with industry governing bodies and warranty providers to help design a series of PAS-compliant roof closure solutions.

Protektor Wemico helped to steer the “two-steps to total protection” process. This process is defined and detailed throughout this guide.

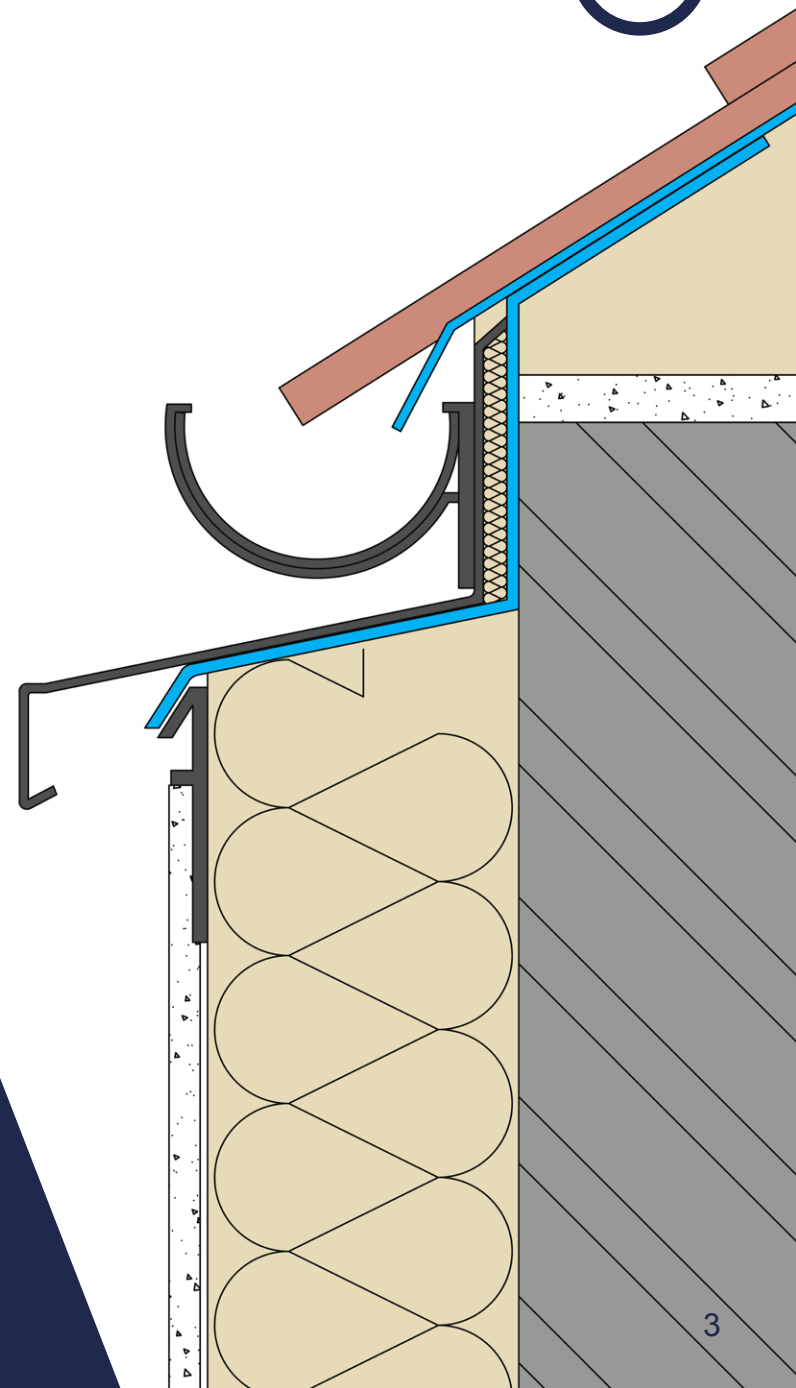
Two distinct steps are at the core of PAS compliance:

1 Membranes

Primary weather protection. Ancillary weather-proofing membranes that provide a watertight system seal.

2 Roof Extension Trims

Secondary weather protection. Metal trims, flashings and profiles.



PAS-PRO Roof Extension Trim (771)

PAS-PRO Roof Extension Trim (771) is designed to encapsulate and protect the top of the system whilst creating a clean straight line. This trim will also add secondary protection to underlying membranes.

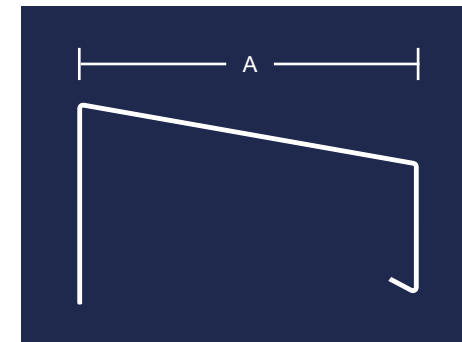
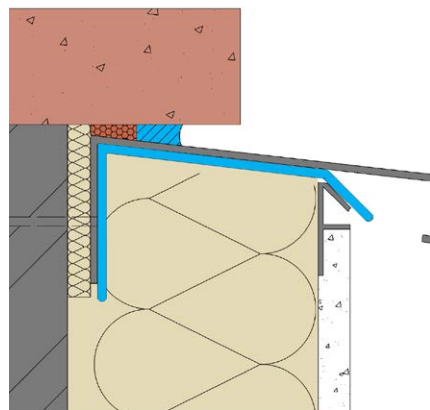
The overhang should extend a minimum of 40mm to mitigate staining (see PAS principles on pages 22 and 23 for more information).

To prevent thermal bridging, this trim can be supplied with an optional aerogel insulated backing strip. This will improve the thermal efficiency of the system.

 Available in black and white as standard (please suffix BLK for black)



The profile is available in a multitude of RAL colours upon request



PAS-PRO 771 - Roof Extension Trim

| CODE | SIZE DIM A | DESCRIPTION | LENGTH |
|-------------|------------|---------------------|--------|
| WECB771/80 | 80mm | Roof Extension Trim | 2.5m |
| WECB771/90 | 90mm | Roof Extension Trim | 2.5m |
| WECB771/100 | 100mm | Roof Extension Trim | 2.5m |
| WECB771/110 | 110mm | Roof Extension Trim | 2.5m |
| WECB771/120 | 120mm | Roof Extension Trim | 2.5m |
| WECB771/130 | 130mm | Roof Extension Trim | 2.5m |
| WECB771/140 | 140mm | Roof Extension Trim | 2.5m |
| WECB771/150 | 150mm | Roof Extension Trim | 2.5m |

PAS-PRO 771 - Roof Extension Trim

| CODE | SIZE DIM A | DESCRIPTION | LENGTH |
|-------------------------|------------|----------------------------|--------|
| WECB771/80 OVERTRIM | 80mm | Roof Extension - Over Trim | 2.5m |
| WECB771/90 OVERTRIM | 90mm | Roof Extension - Over Trim | 2.5m |
| WECB771/100 OVERTRIM | 100mm | Roof Extension - Over Trim | 2.5m |
| WECB771/110 OVERTRIM | 110mm | Roof Extension - Over Trim | 2.5m |
| WECB771/120 OVERTRIM | 120mm | Roof Extension - Over Trim | 2.5m |
| WECB771/130 OVERTRIM | 130mm | Roof Extension - Over Trim | 2.5m |
| WECB771/140 OVERTRIM | 140mm | Roof Extension - Over Trim | 2.5m |
| WECB771/150 OVERTRIM | 150mm | Roof Extension - Over Trim | 2.5m |



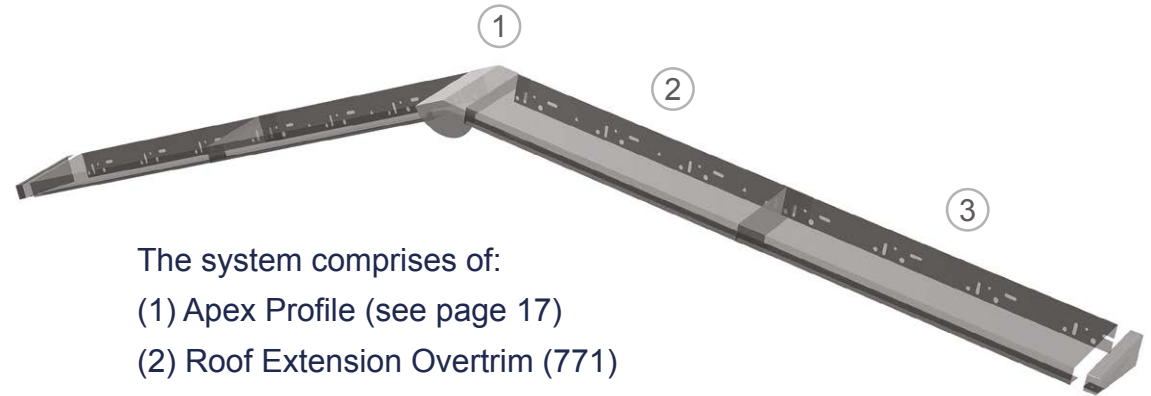
Other sizes, lengths, corners, end caps and joints available to order.

PAS-PRO

Gable Solution (771)

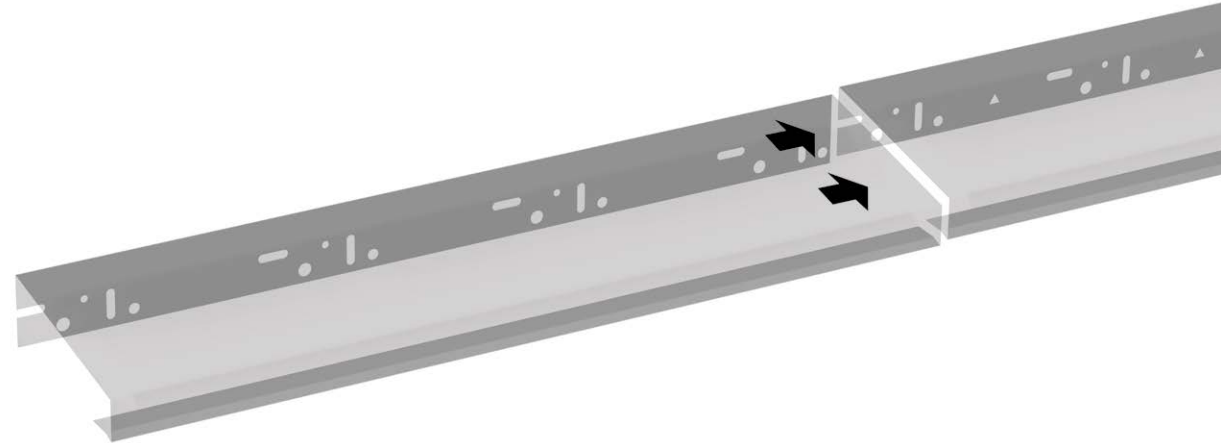


The PAS-PRO Gable Solution (771) protects exposed gables from gutter to apex. The overlapping metal profiles provide optimum protection from driven rain, wind and weathering and reduces the need for ancillary sealant.



The system comprises of:

- (1) Apex Profile (see page 17)
- (2) Roof Extension Overtrim (771)
- (3) Roof Extension Trim (771)



The three components overlap forming a protective metal closure. Overlap minimum 100mm.

PAS-PRO


Grind in Trim (781)

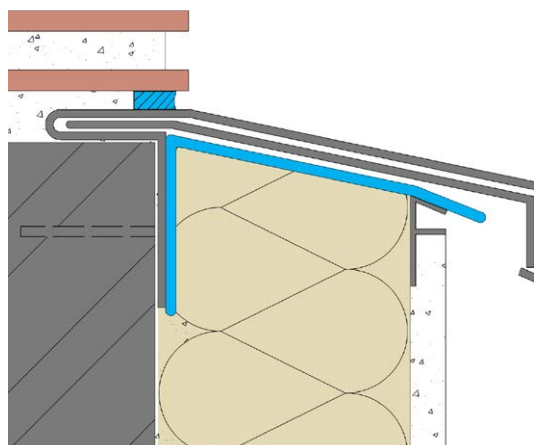
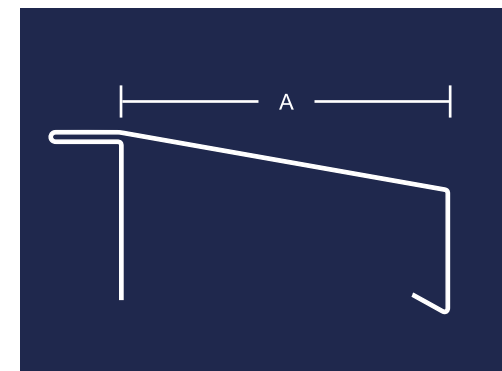
PAS-PRO Grind in Trim (781) is sealed into a mortar joint. This trim needs to be sealed in place with a polymer modified cementitious mortar.

The Grind in Trim oversails an ancillary protective membrane (please see pages 14 and 15 for details).


The overhang should extend a minimum of 40mm to mitigate staining (see PAS principles on pages 22 and 23 for more information).

 Available in black and white as standard (please suffix BLK for black)

 The profile is available in a multitude of RAL colours upon request



| PAS-PRO 781 - Grind in Trim | | | |
|-----------------------------|------------|---------------|--------|
| CODE | SIZE DIM A | DESCRIPTION | LENGTH |
| WECB781/ 80 | 80mm | Grind In Trim | 2.5m |
| WECB781/ 90 | 90mm | Grind In Trim | 2.5m |
| WECB781/ 100 | 100mm | Grind In Trim | 2.5m |
| WECB781/ 110 | 110mm | Grind In Trim | 2.5m |
| WECB781/ 120 | 120mm | Grind In Trim | 2.5m |
| WECB781/ 130 | 130mm | Grind In Trim | 2.5m |
| WECB781/ 140 | 140mm | Grind In Trim | 2.5m |
| WECB781/ 150 | 150mm | Grind In Trim | 2.5m |


 Other sizes, lengths, corners, end caps and joints available to order.


PAS-PRO

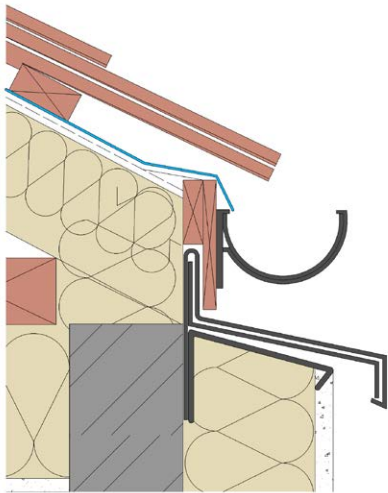
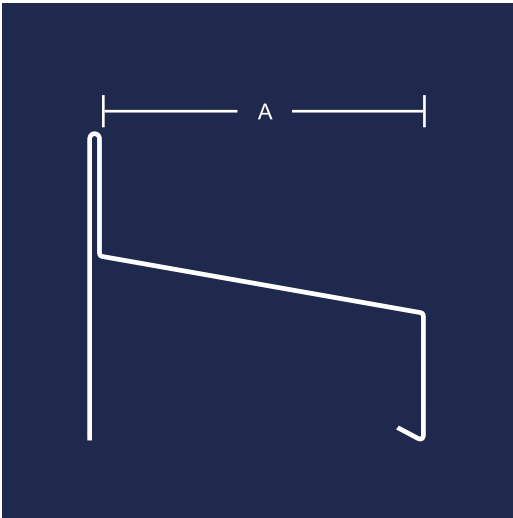
Upstand Trim (791)

PAS-PRO Upstand Trim (791) has a vertical upstand that is pushed under the fascia board. This provides additional weather protection and should be used in conjunction with our range of membranes (see pages 14 and 15).


The overhang should extend a minimum of 40mm to mitigate staining (see PAS principles on pages 22 and 23 for more information).

 Available in black and white as standard (please suffix BLK for black)

 The profile is available in a multitude of RAL colours upon request



| PAS-PRO 791 - Upstand Trim | | | |
|----------------------------|------------|--------------|--------|
| CODE | SIZE DIM A | DESCRIPTION | LENGTH |
| WECB791/ 80 | 80mm | Upstand Trim | 2.5m |
| WECB791/ 90 | 90mm | Upstand Trim | 2.5m |
| WECB791/ 100 | 100mm | Upstand Trim | 2.5m |
| WECB791/ 110 | 110mm | Upstand Trim | 2.5m |
| WECB791/ 120 | 120mm | Upstand Trim | 2.5m |
| WECB791/ 130 | 130mm | Upstand Trim | 2.5m |
| WECB791/ 140 | 140mm | Upstand Trim | 2.5m |
| WECB791/ 150 | 150mm | Upstand Trim | 2.5m |


 Other sizes, lengths, corners, end caps and joints available to order.


PAS-PRO Gutter Trim (801)

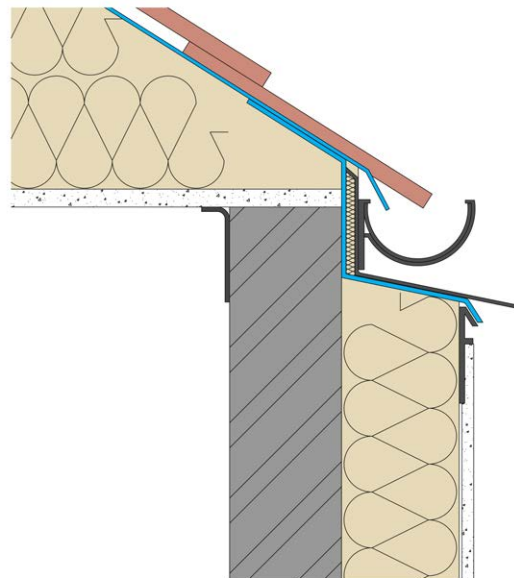
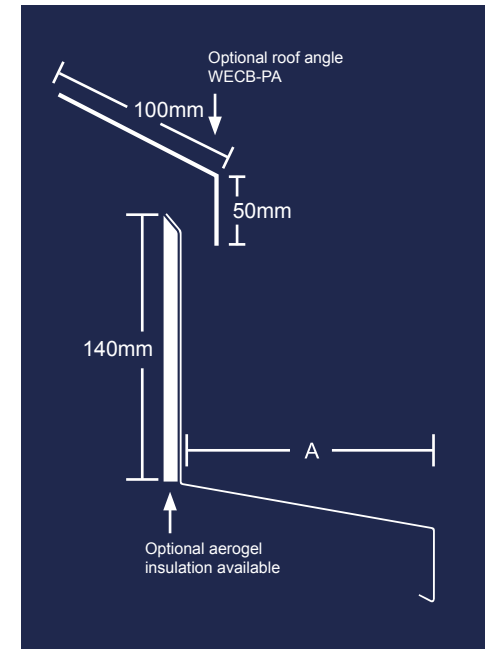
PAS-PRO Gutter Trim (801) is used to protect the top of the system at roof level. The existing gutter will need to be removed temporarily to allow the gutter trim to be installed.

The overhang should extend a minimum of 40mm to mitigate staining (see PAS principles on pages 22 and 23 for more information).

To prevent thermal bridging, this trim can be supplied with an optional aerogel insulated backing strip. This will improve the thermal efficiency of the system.


 Available in black and white as standard (please suffix BLK for black)

 The profile is available in a multitude of RAL colours upon request



PAS-PRO 801 - Gutter Trim

| CODE | SIZE DIM A | DESCRIPTION | LENGTH |
|--------------|------------|-------------|--------|
| WE CB801/80 | 80mm | Gutter Trim | 2.5m |
| WE CB801/90 | 90mm | Gutter Trim | 2.5m |
| WE CB801/100 | 100mm | Gutter Trim | 2.5m |
| WE CB801/110 | 110mm | Gutter Trim | 2.5m |
| WE CB801/120 | 120mm | Gutter Trim | 2.5m |
| WE CB801/130 | 130mm | Gutter Trim | 2.5m |
| WE CB801/140 | 140mm | Gutter Trim | 2.5m |
| WE CB801/150 | 150mm | Gutter Trim | 2.5m |

 Other sizes, lengths, corners, end caps and joints available to order.

PAS-PRO - RA - OPTIONAL ROOF JOINING ANGLE

| CODE | DIM | LENGTH |
|----------|--------------|--------|
| WE CB-RA | 50mm x 100mm | 2.5m |

PAS-PRO

Gutter Trim Corner Section (801)

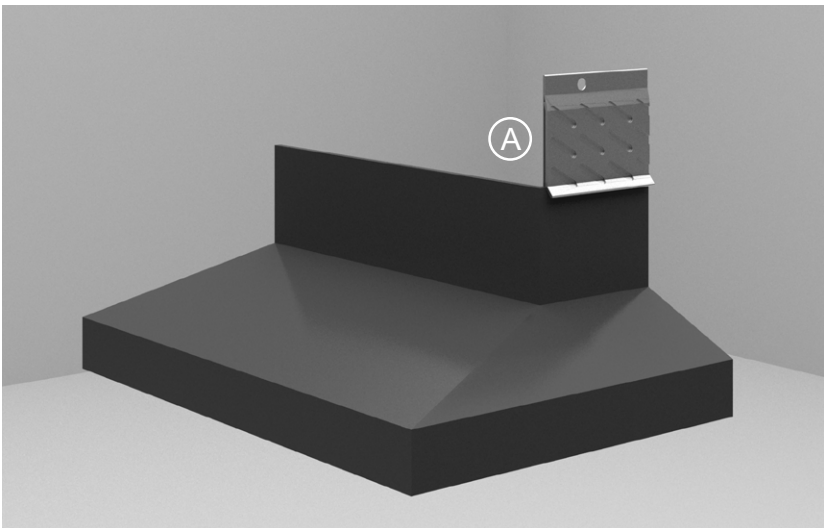
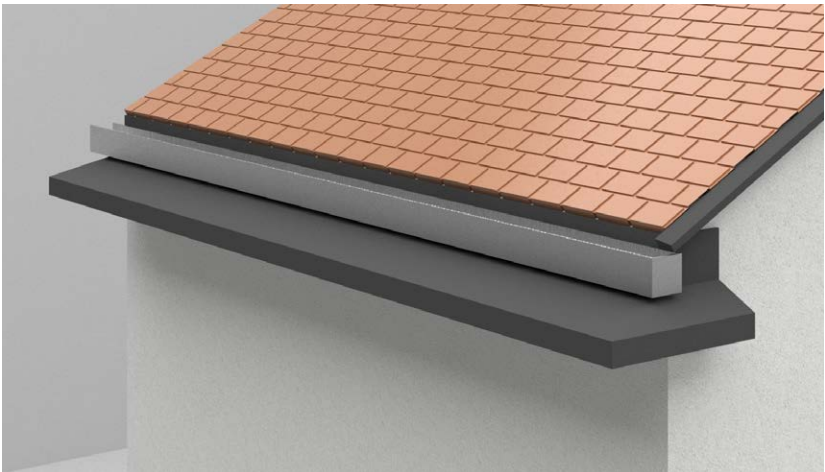
External corners and corner intersections can be highly complex. To ensure weather tightness and PAS compliance corner overlaps must exceed 100mm. Corner sections are available to suit all of our PAS compliant trims.

To help control the flow of water and mitigate staining, our PAS-PRO Gutter Trim Corner Sections provide the perfect intersection between the Gutter Trim and Gable Solution (771).

This corner section should be used in conjunction with our 3749 or RCJT profiles (please see page 10).

| PAS-PRO 801 - Gutter Trim Corner Section | | |
|--|------------|---|
| CODE | SIZE DIM A | DESCRIPTION |
| WECB801/80-EC or IC | 80mm | Gutter Trim Corner - Internal or External |
| WECB801/90-EC or IC | 90mm | Gutter Trim Corner - Internal or External |
| WECB801/100-EC or IC | 100mm | Gutter Trim Corner - Internal or External |
| WECB801/110-EC or IC | 110mm | Gutter Trim Corner - Internal or External |
| WECB801/120-EC or IC | 120mm | Gutter Trim Corner - Internal or External |
| WECB801/130-EC or IC | 130mm | Gutter Trim Corner - Internal or External |
| WECB801/140-EC or IC | 140mm | Gutter Trim Corner - Internal or External |
| WECB801/150-EC or IC | 150mm | Gutter Trim Corner - Internal or External |

Other sizes, lengths, corners, end caps and joints available to order.



(A) 3749 or RCJT profiles



Available in black and white as standard (please suffix BLK for black)



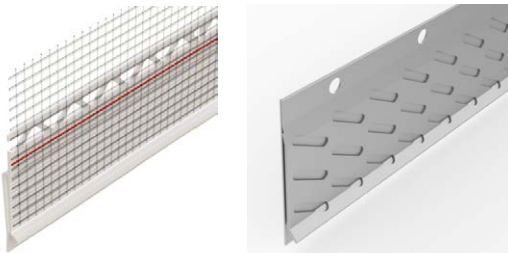
The profile is available in a multitude of RAL colours upon request



PAS-PRO

Transition Trim (722)

PAS-PRO Transition Trim (722) is designed to work in conjunction with our RCJT (aluminium) or 3749 (PVC) to provide a weather tight solution at roof level by sealing the top of the transition trim with a rendered finish.



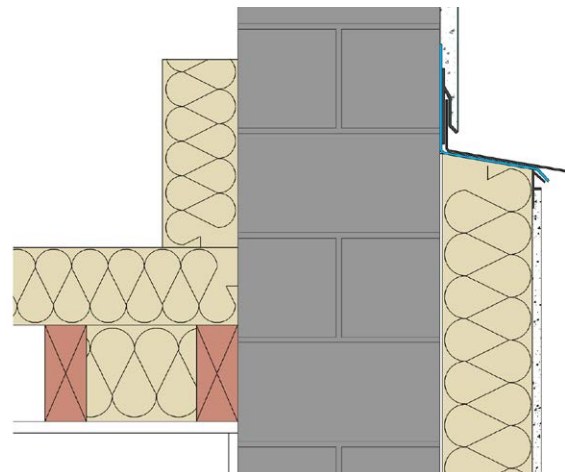
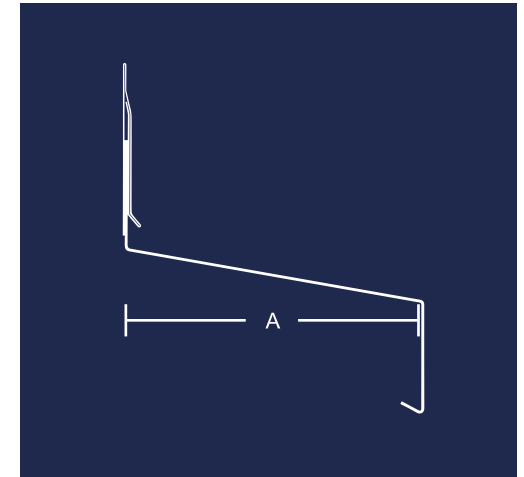
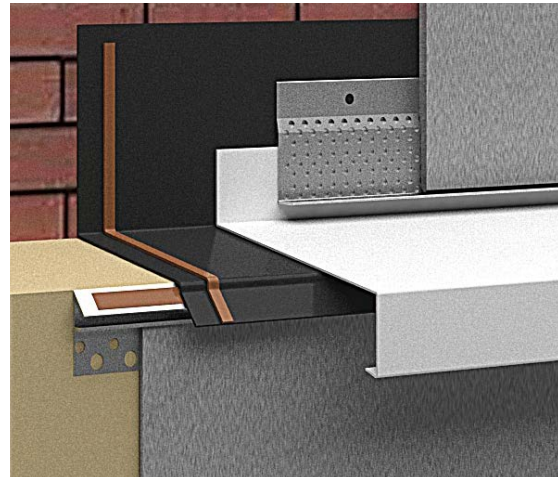
| PAS-PRO - Transition Trim Clip | | | |
|--------------------------------|--------------|-----------------|--------|
| CODE | RENDER DEPTH | DESCRIPTION | LENGTH |
| 3749 | 6mm | PVC with mesh | 2.5m |
| RCJT6 | 6mm | Aluminium | 2.5m |
| RCJT6SS | 6mm | Stainless Steel | 2.5m |

Also available in 10mm and 15mm.

Available in black and white as standard (please suffix BLK for black)



The profile is available in a multitude of RAL colours upon request



| PAS-PRO 722 - Transition Trim | | | |
|-------------------------------|------------|-----------------|--------|
| CODE | SIZE DIM A | DESCRIPTION | LENGTH |
| WECB722/80 | 80mm | Transition Trim | 2.5m |
| WECB722/90 | 90mm | Transition Trim | 2.5m |
| WECB722/100 | 100mm | Transition Trim | 2.5m |
| WECB722/110 | 110mm | Transition Trim | 2.5m |
| WECB722/120 | 120mm | Transition Trim | 2.5m |
| WECB722/130 | 130mm | Transition Trim | 2.5m |
| WECB722/140 | 140mm | Transition Trim | 2.5m |
| WECB722/150 | 150mm | Transition Trim | 2.5m |



Other sizes, lengths, corners, end caps and joints available to order.


PAS-PRO

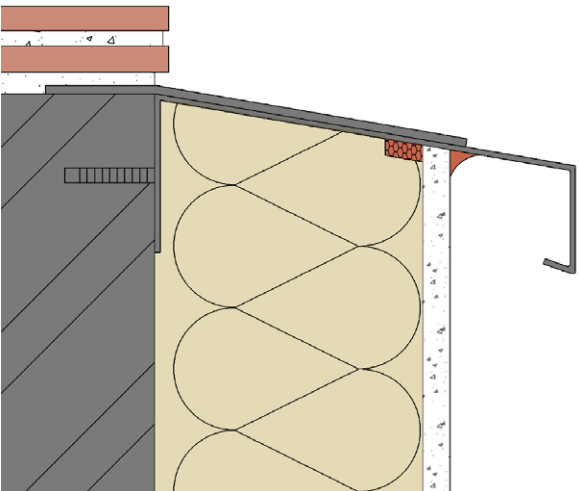
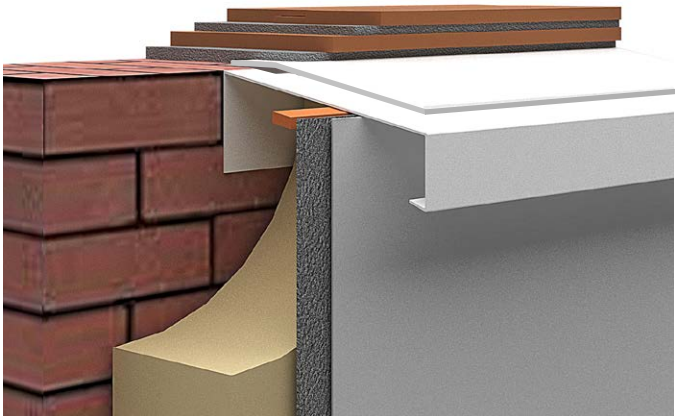
Grind in Cover Flashing (701)

PAS-PRO Grind in Cover Flashing (701) is secured by embedding into a polymer-modified cementitious mortar joint. This secondary layer of protection can be used with the 771 range, replacing the need for a membrane, creating the two steps to total protection.


The overhang should extend a minimum of 40mm to mitigate staining (see PAS principles on pages 22 and 23 for more information).

 Available in black and white as standard (please suffix BLK for black)

 The profile is available in a multitude of RAL colours upon request



| PAS-PRO 701 - Grind in Cover Flashing | | | |
|---------------------------------------|------------|-------------------------|--------|
| CODE | SIZE DIM A | DESCRIPTION | LENGTH |
| WECB701/80 | 80mm | Grind in Cover Flashing | 2.5m |
| WECB701/90 | 90mm | Grind in Cover Flashing | 2.5m |
| WECB701/100 | 100mm | Grind in Cover Flashing | 2.5m |
| WECB701/110 | 110mm | Grind in Cover Flashing | 2.5m |
| WECB701/120 | 120mm | Grind in Cover Flashing | 2.5m |
| WECB701/130 | 130mm | Grind in Cover Flashing | 2.5m |
| WECB701/140 | 140mm | Grind in Cover Flashing | 2.5m |
| WECB701/150 | 150mm | Grind in Cover Flashing | 2.5m |

 Other sizes, lengths, corners, end caps and joints available to order.



PAS-PRO

Insulated Soil Pipe Flashing (TPSP)

PAS-PRO Insulated Soil Pipe Flashing (TPSP) provides a weather tight and thermal bridging solution for soil pipes which can be difficult and costly to remove.

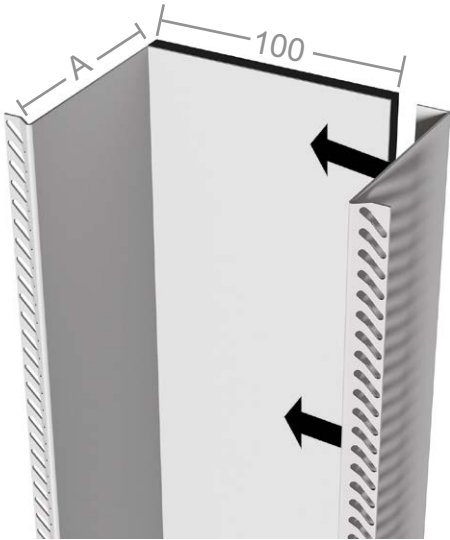
The Insulated Soil Pipe Flashing is supplied with high performance aerogel which will improve the thermal efficiency of the system.

As with all PAS-PRO sections and solutions, a waterproof membrane provides a secondary protective seal, protecting from water ingress into or behind the insulated system.

Thermo-Pro®

Available in black and white as standard (please suffix BLK for black)

The profile is available in a multitude of RAL colours upon request



| PAS-PRO - Insulated Soil Pipe | | | |
|-------------------------------|------------|---------------------------------------|--------|
| CODE | SIZE DIM A | DESCRIPTION | LENGTH |
| TPSP/80 | 80mm | Insulated Soil Pipe Flashing - 2 part | 2.5m |
| TPSP/90 | 90mm | Insulated Soil Pipe Flashing - 2 part | 2.5m |
| TPSP/100 | 100mm | Insulated Soil Pipe Flashing - 2 part | 2.5m |
| TPSP/110 | 110mm | Insulated Soil Pipe Flashing - 2 part | 2.5m |
| TPSP/120 | 120mm | Insulated Soil Pipe Flashing - 2 part | 2.5m |
| TPSP/130 | 130mm | Insulated Soil Pipe Flashing - 2 part | 2.5m |
| TPSP/140 | 140mm | Insulated Soil Pipe Flashing - 2 part | 2.5m |
| TPSP/150 | 150mm | Insulated Soil Pipe Flashing - 2 part | 2.5m |

Other sizes, lengths and caps available to order.

PAS-PRO

Rainwater Downpipe Box

PAS-PRO Rainwater Downpipe Boxes utilise the existing guttering and drainage system. By integrating a swan-necked junction, the downpipe can be moved to the front of the insulation system.

This product features perforated edges to assist render adhesion and prevent hairline cracks.

Insulated Rainwater Downpipe Box

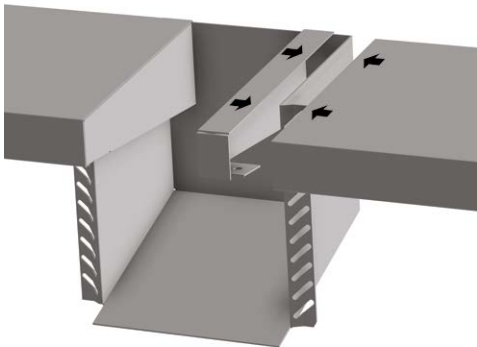
European Patent No. 2703574

Where required to meet the property's PAS requirements, the rear of the box can be insulated with > 10mm of high-performance insulation which reduces thermal bridging.

Thermo-Pro[®]

Available in black and white as standard (please suffix BLK for black)

The profile is available in a multitude of RAL colours upon request



| PAS-PRO - Rainwater Down Pipe Box | | | |
|-----------------------------------|------------|---------------|--------|
| CODE | SIZE DIM A | DESCRIPTION | LENGTH |
| DP/80 | 80mm | Rainwater Box | 2.5m |
| DP/90 | 90mm | Rainwater Box | 2.5m |
| DP/100 | 100mm | Rainwater Box | 2.5m |
| DP/110 | 110mm | Rainwater Box | 2.5m |
| DP/120 | 120mm | Rainwater Box | 2.5m |
| DP/130 | 130mm | Rainwater Box | 2.5m |
| DP/140 | 140mm | Rainwater Box | 2.5m |
| DP/150 | 150mm | Rainwater Box | 2.5m |

Other sizes available to order.

| Insulated Rainwater Down Pipe Box | | | |
|-----------------------------------|------------|---------------|--------|
| CODE | SIZE DIM A | DESCRIPTION | LENGTH |
| TPR/80 | 80mm | Rainwater Box | 2.5m |
| TPR/90 | 90mm | Rainwater Box | 2.5m |
| TPR/100 | 100mm | Rainwater Box | 2.5m |
| TPR/110 | 110mm | Rainwater Box | 2.5m |
| TPR/120 | 120mm | Rainwater Box | 2.5m |
| TPR/130 | 130mm | Rainwater Box | 2.5m |
| TPR/140 | 140mm | Rainwater Box | 2.5m |
| TPR/150 | 150mm | Rainwater Box | 2.5m |

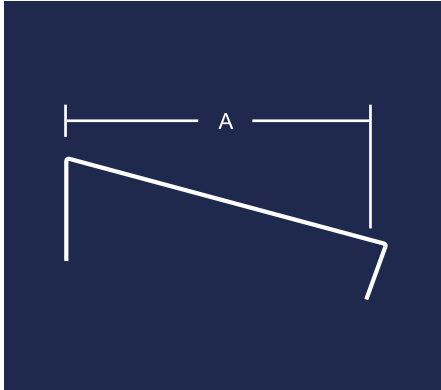
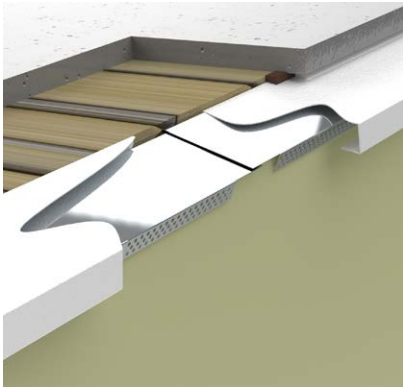
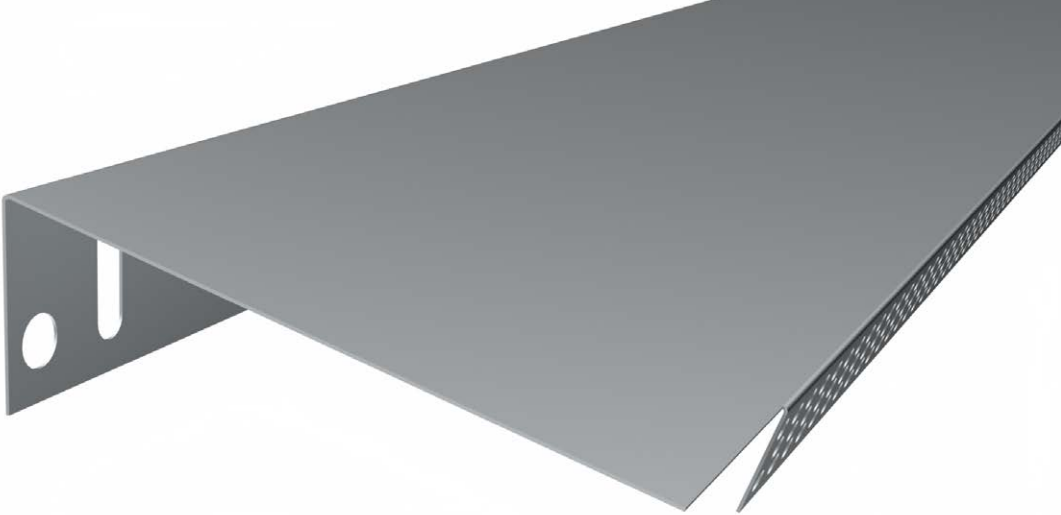
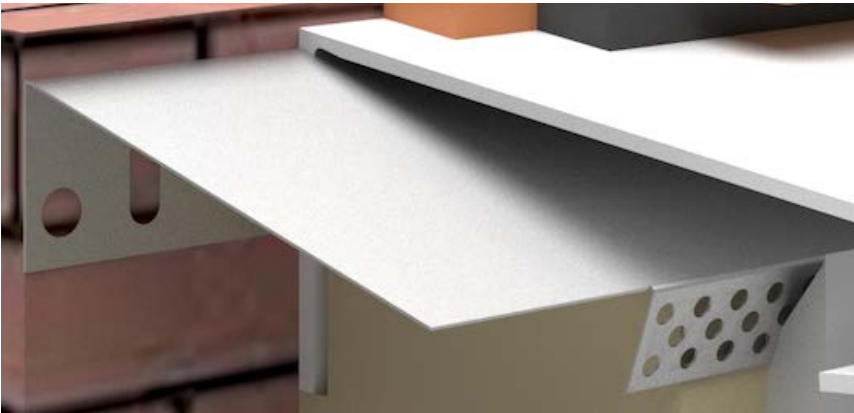
Other sizes available to order.



PAS-PRO Metal Membrane (977)

PAS-PRO Metal Membrane (977) provides a waterproof barrier and can be used as one of the two steps to total protection.

This membrane is available in mill finish aluminium.



| PAS-PRO - Metal Membrane (977) | | | |
|--------------------------------|------------|--------------------|--------|
| CODE | SIZE DIM A | DESCRIPTION | LENGTH |
| 97708W | 80mm | Aluminium Membrane | 2.5m |
| 97709W | 90mm | Aluminium Membrane | 2.5m |
| 97710W | 100mm | Aluminium Membrane | 2.5m |
| 97711W | 110mm | Aluminium Membrane | 2.5m |
| 97712W | 120mm | Aluminium Membrane | 2.5m |
| 97713W | 130mm | Aluminium Membrane | 2.5m |
| 97714W | 140mm | Aluminium Membrane | 2.5m |
| 97715W | 150mm | Aluminium Membrane | 2.5m |

Other sizes and lengths available to order.

PAS-PRO Weatherproof Membrane

PAS-PRO Weatherproof Membrane is a waterproof barrier suitable for use in all PAS-PRO applications.

This product is available in a variety of sizes and is designed for installation on-site, providing a secure secondary seal.



| A2 Membrane | | | |
|-----------------|------------|----------------------|--------|
| CODE | SIZE DIM A | DESCRIPTION | LENGTH |
| MEMBRANE-A2 250 | 300mm | A2 FIRE MEMBRANE 10M | ROLL |
| MEMBRANE-A2 300 | 300mm | A2 FIRE MEMBRANE 10M | ROLL |
| MEMBRANE-A2 350 | 300mm | A2 FIRE MEMBRANE 10M | ROLL |
| MEMBRANE-A2 400 | 500mm | A2 FIRE MEMBRANE 10M | ROLL |

Other sizes available to order.

| Universal Membrane | | | |
|--------------------|------------|------------------------|--------|
| CODE | SIZE DIM A | DESCRIPTION | LENGTH |
| MEMBRANE-UNIV 250 | 250mm | UNIVERSAL MEMBRANE 25M | ROLL |
| MEMBRANE-UNIV 300 | 300mm | UNIVERSAL MEMBRANE 25M | ROLL |
| MEMBRANE-UNIV 350 | 350mm | UNIVERSAL MEMBRANE 25M | ROLL |
| MEMBRANE-UNIV 500 | 500mm | UNIVERSAL MEMBRANE 25M | ROLL |

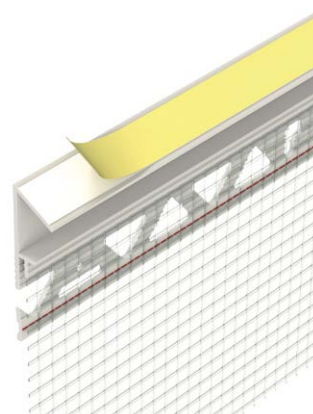
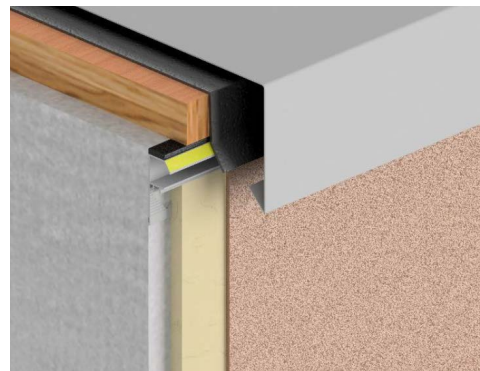
Other sizes available to order.

PAS-PRO

Connection Profiles (37207 and 37214)

PAS-PRO Connection Profiles protect from driving rain and ensure optimum weather tightness.

These profiles are suitable for use in all PAS-PRO applications and with multiple finishes.



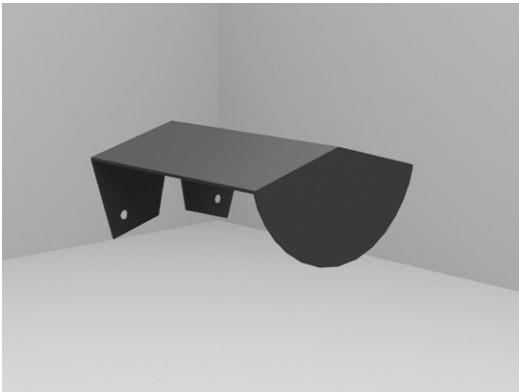
| PAS-PRO - Connection Profile (37207) | | | |
|--------------------------------------|------------|--------------------|--------|
| CODE | SIZE DIM A | DESCRIPTION | LENGTH |
| 37207 | 6mm | Connection Profile | 2.5m |

| PAS-PRO - Connection Profile (37214) | | | |
|--------------------------------------|----------|--------------------|--------|
| CODE | RENDER | DESCRIPTION | LENGTH |
| 37214 | 8mm-14mm | Connection Profile | 2.5m |

PAS-PRO Apex

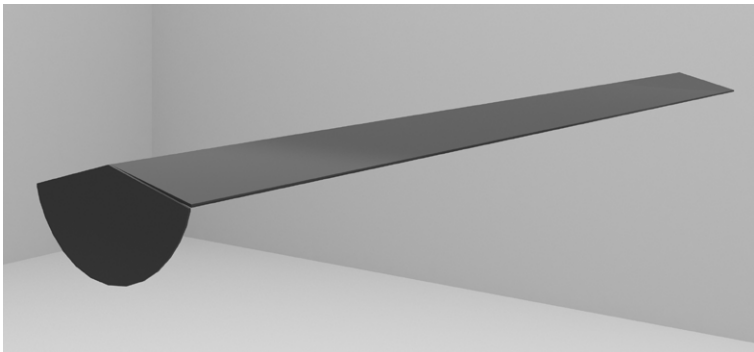
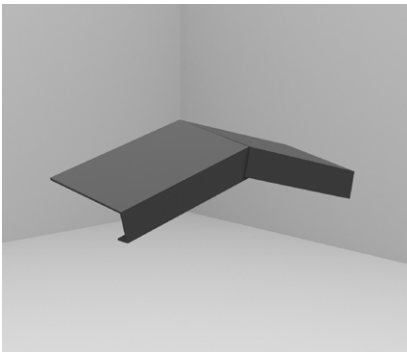
PAS-PRO Apexes are a range of flexible site-formed, PAS-compliant weathertight trims for use at the top of the gable wall.

Apex sections are used in union with our PAS-PRO roof closure trims and membranes to ensure compliance.



| PAS-PRO - Apex Trim with lugs | | | |
|-------------------------------|------------|---------------------|--------|
| CODE | SIZE DIM A | DESCRIPTION | LENGTH |
| APEX TB 771/80 | 80mm | Apex Trim with lugs | each |
| APEX TB 771/90 | 90mm | Apex Trim with lugs | each |
| APEX TB 771/100 | 100mm | Apex Trim with lugs | each |
| APEX TB 771/110 | 110mm | Apex Trim with lugs | each |
| APEX TB 771/120 | 120mm | Apex Trim with lugs | each |
| APEX TB 771/130 | 130mm | Apex Trim with lugs | each |
| APEX TB 771/140 | 140mm | Apex Trim with lugs | each |
| APEX TB 771/150 | 150mm | Apex Trim with lugs | each |

Other sizes available to order.



Available in black and white as standard (please suffix BLK for black)



The profile is available in a multitude of RAL colours upon request

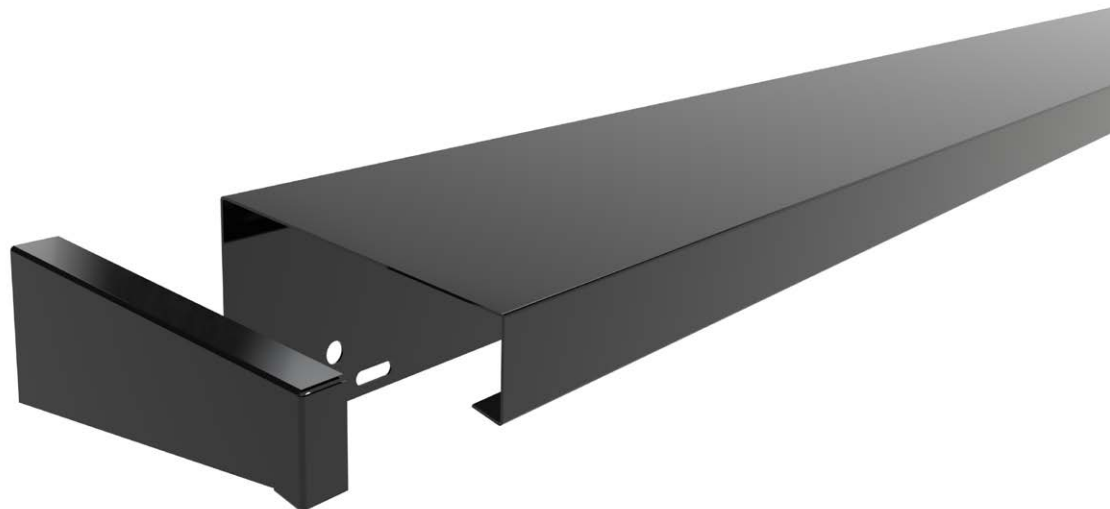
| PAS-PRO - Adjustable Apex Trim | | |
|--------------------------------|----------------------|--------|
| CODE | DESCRIPTION | LENGTH |
| APEX 771/200 | Adjustable Apex Trim | each |

| PAS-PRO - Apex Trim Curved | | | |
|----------------------------|------------|------------------|--------|
| CODE | SIZE DIM A | DESCRIPTION | LENGTH |
| APEX 200 CURVED | 200mm | Apex Trim Curved | each |
| APEX 250 CURVED | 250mm | Apex Trim Curved | each |

PAS-PRO End Caps

Our PAS-PRO End Caps can be used with the 722, 771, 781, 791 and 801 profiles.

A good quality sealant must be applied to the inside of the profile before sliding the end cap into position. Aluminium rivets can be used to secure the end cap in place.



Available in black and white as standard (please suffix BLK for black)



The profile is available in a multitude of RAL colours upon request

Trim Ancillaries

| CODE | SIZE DIM A | DESCRIPTION | LENGTH |
|----------|------------|---|--------|
| EC-R 80 | 80mm | 80mm End Caps - 722/771/781/791/801 ranges | 2.5m |
| EC-R 90 | 90mm | 90mm End Caps - 722/771/781/791/801 ranges | 2.5m |
| EC-R 100 | 100mm | 100mm End Caps - 722/771/781/791/801 ranges | 2.5m |
| EC-R 110 | 110mm | 110mm End Caps - 722/771/781/791/801 ranges | 2.5m |
| EC-R 120 | 120mm | 120mm End Caps - 722/771/781/791/801 ranges | 2.5m |
| EC-R 130 | 130mm | 130mm End Caps - 722/771/781/791/801 ranges | 2.5m |
| EC-R 140 | 140mm | 140mm End Caps - 722/771/781/791/801 ranges | 2.5m |
| EC-R 150 | 150mm | 150mm End Caps - 722/771/781/791/801 ranges | 2.5m |

Other sizes available to order.

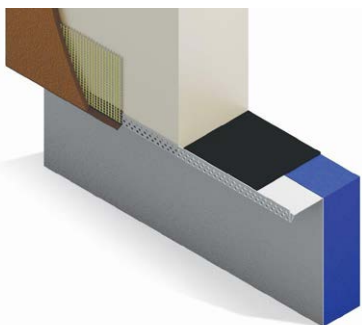
PAS-PRO

Thermo-Pro Track (DPC)

PAS-PRO Insulated Base Track is designed to reduce cold bridging at the base of the system.

The profile is bonded to insulation (XPS).

This solution is easy to install, easy to clean, aesthetically pleasing and improves the thermal performance of the system.



| PAS-PRO Thermo-Pro Track (DPC) | | |
|--------------------------------|-------|--------|
| CODE | WIDTH | LENGTH |
| TPT/80 | 80mm | 2.5m |
| TPT/90 | 90mm | 2.5m |
| TPT/100 | 100mm | 2.5m |
| TPT/110 | 110mm | 2.5m |
| TPT/120 | 120mm | 2.5m |
| TPT/130 | 130mm | 2.5m |
| TPT/140 | 140mm | 2.5m |
| TPT/150 | 150mm | 2.5m |

Other sizes, lengths, corners and end caps available to order.

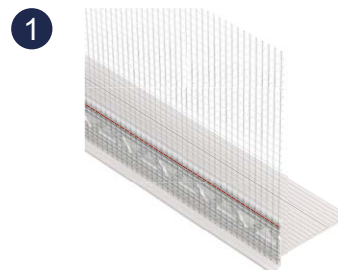
GB Patent No. 2528659

Thermo-Pro[®]

This profile is manufactured to suit customer's requirements.

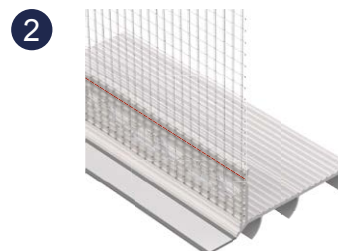
PAS-PRO

PVC Profiles (DPC)



| PAS-PRO PVC Base Tracks (DPC) | | | |
|-------------------------------|--------------|-------|--------|
| CODE | RENDER DEPTH | WIDTH | LENGTH |
| 37500 | 6mm | 60mm | 2m |
| 37501 | 6mm | 100mm | 2m |
| 37503 | 10mm | 60mm | 2m |

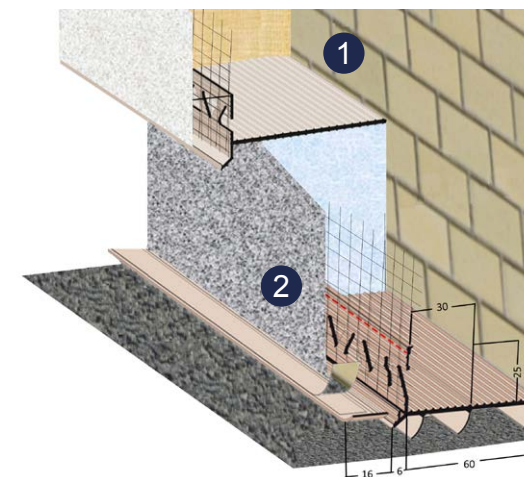
Other sizes available to order.



| PAS-PRO PVC Ground Profile | |
|----------------------------|--------|
| CODE | LENGTH |
| 37520 | 2m |

This solution is designed to be used at DPC level reducing cold bridging and providing a clean line.

This profile is recommended for use on hard surfaces such as concrete and tarmac.



PAS-PRO Thermo-Pro Flash (TPFL)

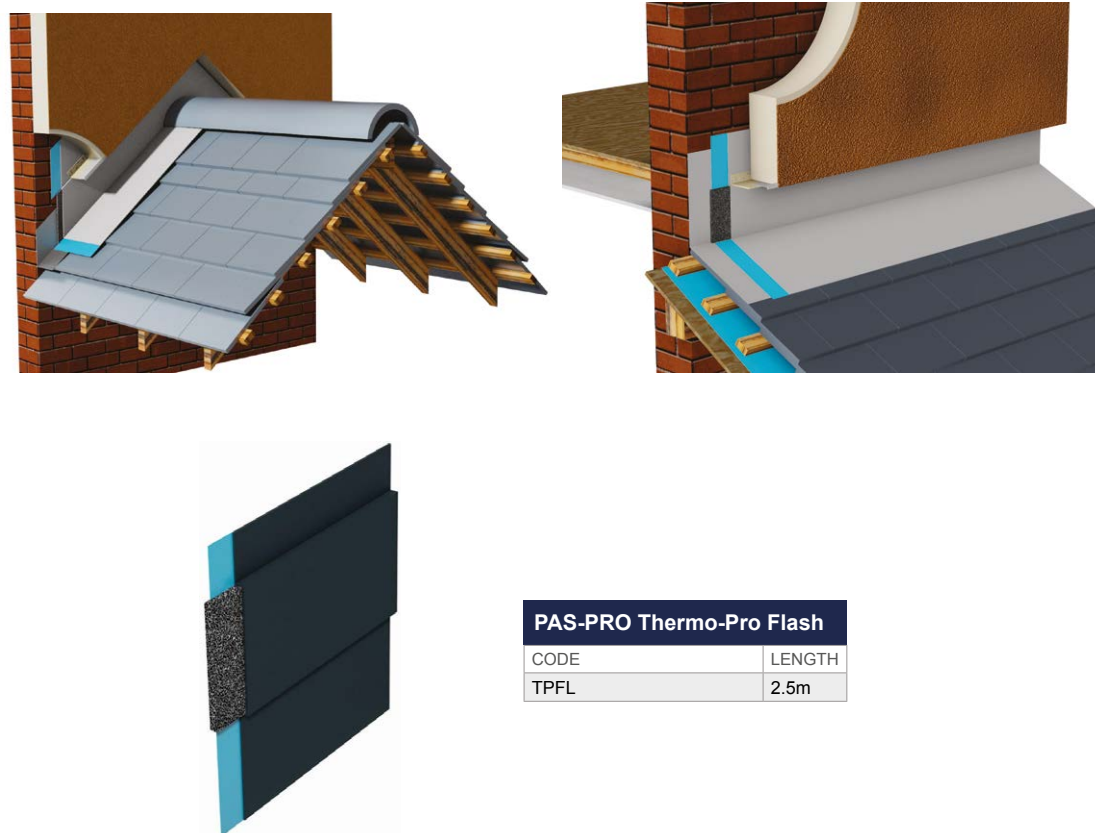
PAS-PRO Thermo-Pro Flash (TPFL) has been developed to prevent cold bridging in hard to insulate areas.

The solution comprises of 10mm high performance insulation bonded onto a self adhesive lead replacement flashing. The key areas of use are connecting wall and roof junctions, parapet roofs and bay windows.

This solution is quick and easy to use enhancing the performance of EWI systems, both on new build and retrofit applications.

Thermo-Pro[®]

● Only available in black



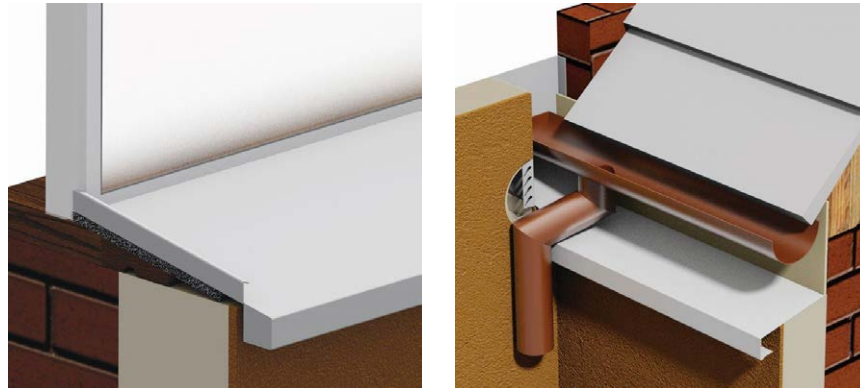
| PAS-PRO Thermo-Pro Flash | |
|--------------------------|--------|
| CODE | LENGTH |
| TPFL | 2.5m |

PAS-PRO

Customised Ancillaries

Protektor Wemico offer a customised profile service and can produce bespoke insulated and uninsulated trims to suit the specific needs of your project.

Contact Protektor Wemico to discuss your requirements on 01562 820123.



To deliver absolute compliance the steps and solutions must satisfy a series of principles documented in the “External Wall Insulation specification for weathering and thermal bridge control guide”.

The principles are designed to steer the development of roof closure solutions to comply with PAS.

The principles* include:

1 Redundancy of seals:

At least two lines of weathering protection required. Sealants shall not be employed to provide the primary barrier to water penetration. The additional redundancy can be achieved with an additional trim or suitable membrane. All joints must have a double seal to comply with the PAS requirements.

At eaves with insufficient roof overhang: Protection afforded to the top of the EWI system must include a secondary waterproof membrane and/ or flashing that tucks under the existing sarking felt. Overhang must be appropriate for exposure zone, (40 mm moderate or sheltered exposure – 50 mm severe or very severe exposure) based on the BRE wind driven rain map in BR262 Thermal insulation: avoiding risks – Appendix A: WP2 / (publishing.service.gov.uk)

2 Gable-to-eaves junctions must be achieved with overlapping, prefabricated units/connectors:

Site fabrication is not permissible though minor site trimming is permissible. Any joints between the primary and secondary seal must be staggered by 100 mm. Insulation to be maintained in corner of gable wall up to level of loft insulation as per Retrofit Designer requirements.

3 Gable apexes must be formed using prefabricated elements:

Site bent flashing can be utilised however secondary lead replacement flashing required over the apex. Site-formed mitre joints using two separate profiles are not permissible.

4 Connections between adjacent sections of Roof closure systems:

Must incorporate an under or over connector that extends min. 40 mm on each side of the joint. Connectors must be sealed to both sections of the metal profile (roof closure, etc) using ancillary sealing tapes or ancillary sealants that must extend for the full width of the trim. Any joints between the primary and secondary seal must be staggered by 100 mm requirements.

5 If using lead as a solution the maximum length in a single piece should be 1200 mm and overlaps should follow best practice. Ensure health and safety requirements are complied with Control of Lead at Work (Third edition) - Control of Lead at Work Regulations 2002 Approved Code of Practice and guidance (hse.gov.uk) If lead replacement flashings are used, these should be securely fixed in accordance with the manufacturer's recommendations.

* Version 4th March 2023. The principles may be subject to change and periodic review.

- 6** If **soffit/roof overhangs** are 40 mm (50 mm for high exposure) or less then trims/flashings should be embedded into the masonry, or below the cement pointing at verges and sealed. Any joints between a primary and secondary layer of redundancy must be overlapped by a minimum 100mm. The sand and cement fillet should be replaced with a suitable flexible mortar.
- 7** The installation of the **weathering protection** details must be separately included within the EWI system holder training that is provided to registered EWI installation contractors.
- 8** In all cases there should be continuity of the roof insulation and the insulated roofline closure solution to provide a minimum “thermal resistance of 0.6m²K/W (and ensure no thermal bridging).
- 9** **Roofline closure details** that **do not** meet the requirements above **may not be acceptable for use with funded or private schemes.**



PAS-PRO
Upstand Trim (791)
See Page 7



PROTEKTOR GROUP UK LTD

Protektor House, Edwin Avenue
Hoo Farm Estate, Kidderminster
Worcs, DY11 7RA

T: 01592 820123
F: 01562 822012
E: sales@wemico.co.uk



wemico.com