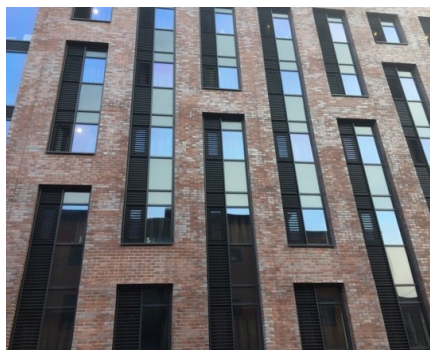
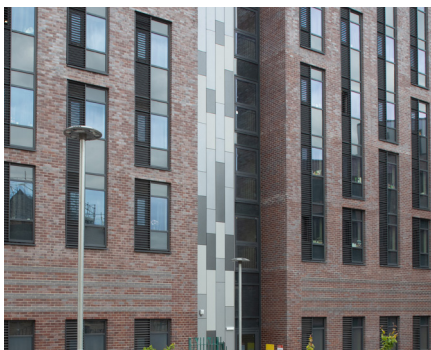


CASE STUDY:

ST VINCENTS, SHEFFIELD



Project size:	4,500sqm
System used:	Aliva UK Termok8 Minerale Modular D Clay slip system and aluminium Alucovering in three powder coated finishes
Installer:	Hamilton (Building Contractors) Ltd
Main Contractor:	Bowmer and Kirkland
End User:	Unite Students
Architect:	Hadfield Cawkwell Davidson
Completion date:	2018

