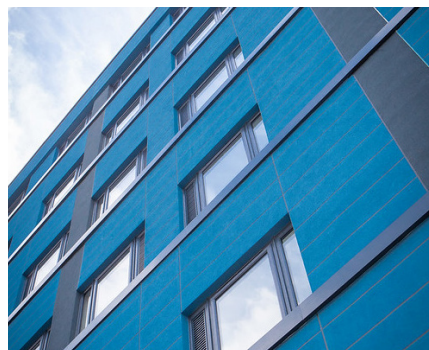


# CASE STUDY: FABRICK HOUSE, CHEADLE HULME



**Project size:** 5,100sqm

**System used:** Aliva UK Termok8 Minerale Modular Flex Lightweight slip system and Classico finish with silicone texture in a panel effect

**Installer:** Hamilton (Building Contractors) Ltd

**Main Contractor:** Head Office 3

**End User:** Head Office 3

**Architect:** Falconer Chester Hall

**Completion date:** 2018

