



ULTIMATE STEEL

External Wall Insulation System

DESIGNED FOR USE WITH STEEL FRAMED CONSTRUCTION

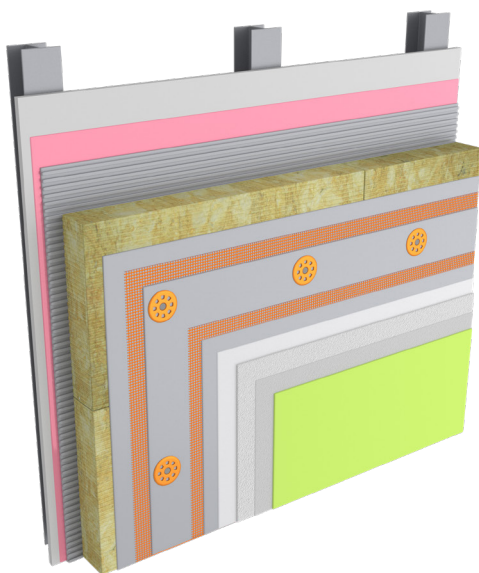


ULTIMATE STEEL SYSTEM

Ultimate Steel is a range of external wall insulation systems that can be directly installed onto steel framed construction. The unique solution means that the systems are utilised without the need for a drained or ventilated cavity, which can act as pathways in the event of fire. Systems are offered in a diverse range of finishes and are also available as either A1 non-combustible or A2-s1,d0 fire ratings, meaning they are 100% compliant with UK Building Regulations.

The range of systems have third party certification offered by KIWA and can either be installed direct onto sheathing board or over breather membranes. Ultimate Steel is fast becoming the specification of choice for many Building Safety Fund projects, due to its ease of installation and industry leading fire performance, providing client and specifiers with confidence they have a 100% future proof and compliant system on their building.

SYSTEM 1 - ULTIMATE A1 HD MINERAL

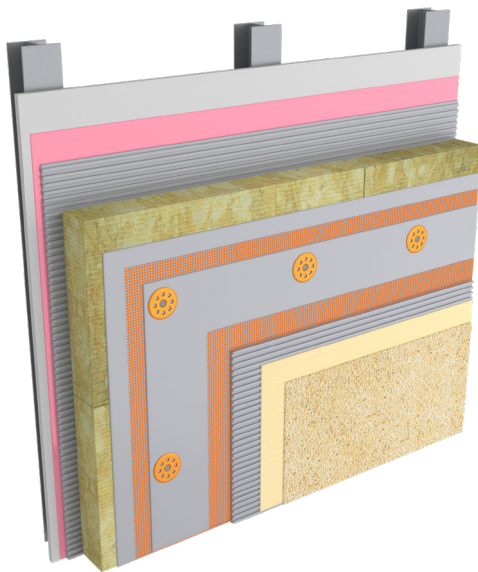


Criteria	Standard	Result
Reaction to Fire	BS13501-1	A1
Hard Body Impact	ETAG004	Category I
Design Wind Load Resistance	BS1991-1-4	2.5kN/m2

The Ultimate A1 HD Mineral system is the system of choice when looking for an A1 system that offers over 300 different colour options. The Soltherm paint utilised within the system offers superb anti-fungal properties whilst still maintaining the A1 fire rating, making it a very unique system within the industry.



SYSTEM 1 - ULTIMATE A1 HD DASH



Criteria	Standard	Result
Reaction to Fire	BS13501-1	A1
Hard Body Impact	ETAG004	Category I
Design Wind Load Resistance	BS1991-1-4	2.5kN/m2

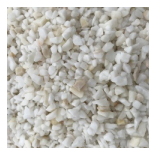
The Ultimate A1 HD Dash system is available in 5 basecoat colours and can be utilised with an extensive range of aggregates to achieve the desired aesthetics. The system with its fire performance and durability is ideal when looking for a system that will complement surrounding traditional finishes.

Dashing Aggregates

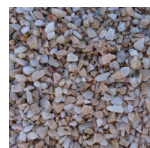
These are just a few many more aggregates are available upon request



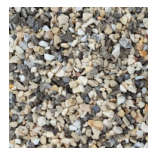
Arisaig



Artic



Ashton



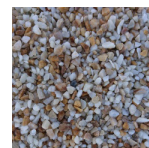
Derby Spar



Dolomite
Roughcast



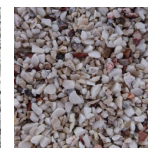
Glenarm
Roughcast



HB -
Castlehill



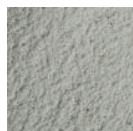
Nordic
Roughcast



Pembroke
Spar

Soltherm SDR Dashing Render

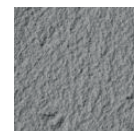
Dash Receiver comes in five attractive colours:



Cream



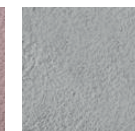
Buttermilk



Grey

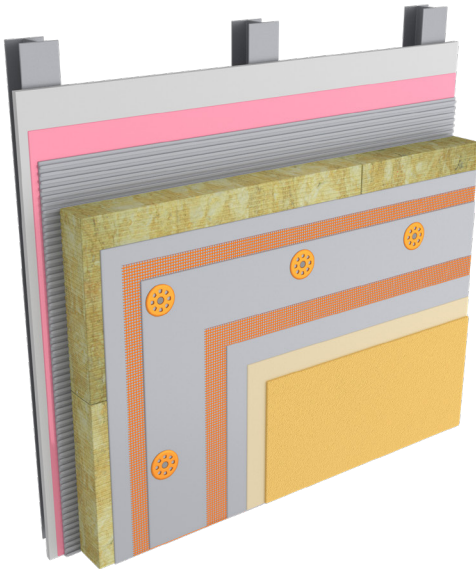


Salmon
Pink



White

SYSTEM 1 - ULTIMATE HD SILICONE



Criteria	Standard	Result
Reaction to Fire	BS13501-1	A2-s1,d0
Hard Body Impact	ETAG004	Category I
Design Wind Load Resistance	BS1991-1-4	2.5kN/m2

The Ultimate HD Silicone is the most flexible system offered within the Ultimate Steel range. This is due to the high silicone content within the topcoats. The system is extremely durable and available in +300 colours.



ULTIMATE OVERALL SYSTEM BENEFITS



Soltherm External Insulation Ltd, Challenge House, Sherwood Drive, Bletchley, Milton Keynes MK3 6DP
Tel : 01908 533 444 www.soltherm.co.uk

