

2021 **INCA** Insulated Render and Cladding Association **AWARDS**

A CELEBRATION OF EWI INNOVATION AND EXCELLENCE



WINNERS 2021



LEADING THE UK EXTERNAL WALL INSULATION INDUSTRY FOR 40 YEARS

inca-ltd.org.uk  [#INCA Awards](https://twitter.com/INCA Awards)

in aid of
mencap



EXTERNAL RENDER INSULATION

Coverock R

Stone mineral wool for Thermal Insulation of External Wall Insulation systems.

Coverock is stone mineral wool for External Thermal, Acoustic and Fire insulation of buildings.

Coverock is a A1 non-combustible product, specifically designed for EWI and Rainscreen Cladding.



WWW.COVEROCK.CO.UK



TRUELINE

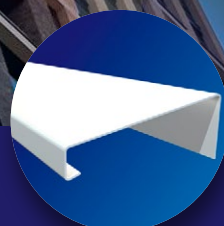
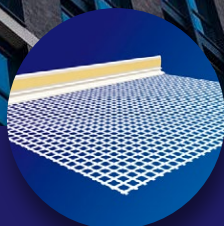
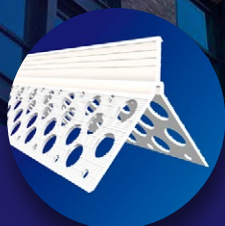
PRODUCTS

PROUD INDEPENDANT
UK MANUFACTURER OVER
27
YEARS
IN BUSINESS

"WE'VE GOT THE EDGE"

Leading manufacturers and suppliers of fabrication products for the building and construction industry.

- Specialists in EWI Beads, Trims & Accessories
- In-house Powder Coating
- Short Lead Times
- On Site Surveys
- Full UK Coverage



For more information

Call +44 (0)1562 823267

✉ enquiries@truelineproducts.co.uk



follow us



www.truelineproducts.co.uk

WELCOME FROM THE CHAIRMAN

INCA Chairman Marcus Alcindor explains how INCA and its members are embracing the opportunities of an ever-changing energy efficiency and construction market.

The INCA Awards presents the opportunity to showcase leading EWI projects completed in 2020; an ideal platform to champion our industry, reinforce the energy efficiency message, and to re-cast the net for innovation in our combined goal of improving the living standards for our planet for years to come.

The word 'Cladding' has always appeared in the name of INCA without real representation; a situation the board agreed to remedy by establishing a dedicated 'steering group.' It is clear from feedback there is a demand for representation in this market. The tragedy of Grenfell, and the abandonment of contractors by Insurers has brought significant challenges and opportunities into this market in equal measure. We look forward to the conclusions of this group, and the inclusion of a new 'Cladding' category in next year's Awards.

This time last year saw our members upscaling to deliver the ambitious targets set under 'ECO' obligations and the 'Green Home Grant Voucher' schemes following a hiatus since the end of CERT and CESP. Twelve months on and an industry left reeling following the abrupt discontinuation of the homeowner element of the GHGVs despite encouraging signs of uptake coupled with the positive impacts of improved energy efficiency.

Also impacting members is legislation uncertainty surrounding the new 'building fire safety bill', hangover of Brexit, and Covid-19. Fortunately, the UK economy is recovering with predictions that construction in 2022 will increase by 5.2%, creating increased opportunities for INCA members outside of the retrofit social housing market.

It is a huge privilege to be INCA Chairman at such a critical time for our industry. I look forward to working with other like-minded organisations to continue to improve the energy efficiency of the UKs building stock to meet the significant targets on carbon reduction and fuel poverty, and to make High Rise Residential Buildings safer to live in. We are also pushing for effective representation of members at government level, to feed into and simplify processes thus enabling us all to deliver what is required to earn a living, safely and effectively.

Marcus Alcindor, INCA Chairman



INSIDE...

- 5 Outstanding Achievement Award
- 6 Architectural Design
- 8 New Build – Insulation / render finish
- 10 New Build – insulation / brick, clay, ceramic, or stone finish
- 12 Refurbishment – insulation / render finish
- 14 Refurbishment – insulation / brick, clay, ceramic, or stone finish
- 16 Render only
- 18 MMC / offsite
- 20 EWI systems / traditional finishes
- 21 Environmental / energy conservation
- 22 Training Award
- 25 Innovation Award
- 27 Component Supplier of the Year
- 27 Installation Company of the Year

THANK YOU TO ALL OUR SPONSORS



Insulated Render and Cladding Association (INCA)

• 0330 124 6585 • info@inca-ltd.org.uk • www.inca-ltd.org.uk • @INCASecretariat • #INCAAwards

2021 AWARD JUDGES

Andrew Champ

Andrew Champ has worked in the construction industry for over 35 years with a background in construction. Andrew worked for Rockwool for over 20 years in Technical, Marketing and Business Development areas of the business. Andrew joined SWIGA in 2015 and developed the SWIGA brand and activity whilst continuing to support the industry in positive changes to PAS, and running NOS work groups for solid wall disciplines in conjunction with the CITB.

JUDGES COMMENT: *The entries this year built on the excellence and attention to detail that was in abundance last year. The categories cover current and emerging markets, with high rise, retrofit, new build, housing, commercial, and offsite all now utilising this versatile technology. Once again spoilt for choice leading to a thought-provoking judging day, winner or not, all of the entries were excellent so congratulations to all who entered.*

Alan Hampson

Alan Hampson has held several management positions within the Mineral Fibre Industry over the past 40 years, and currently heads-up Knauf Insulation's EWI business.

Working both in the UK and previously overseas, he has significant experience and a proven track record in providing insulation solutions for a wide variety of clients across several market sectors.

JUDGES COMMENT: *"A tremendous array of attractive and diverse projects, showcasing the versatility and sheer aesthetic quality of EWI Systems."*

Congratulations to all entrants for making judging this year's INCA Awards, both a difficult and rewarding exercise"

Gary Peacey

With over 25 years' experience of EWI, Renders and Insulation, Gary decided to fulfil a long-term desire to start his own consultancy business to assist all aspects of the industry. EWI Consultants Limited was established in March 2020, the same week of the Covid lockdown and despite the difficulties this posed, the business is now progressing well and as part of that Gary has been contracted by INCA to the position of Technical Consultant to support the activities of the Technical Committee.

JUDGES COMMENT: *"Every entry this year should be praised for the overall quality and consistency, making the process of shortlisting, establishing a winner and highly commended very difficult for the judges. In some cases the winners were selected on fine technical margins. All entrants should be very proud of the aesthetic quality of this year's projects enabling the 2021 INCA Awards to showcase the quality of finish that can be achieved, the flexibility, and diversity of EWI and renders."*



"The entries this year built on the excellence and attention to detail that was in abundance last year."

Paul Winwood

Paul has worked in construction for 33 years after joining the industry in 1988 with Kingspan!

He moved into coatings and exterior specialist finishes before joining Alsecco in 2003 as their National Sales Manager. After three years he left to join rival SPS Envirowall, where he spent 12 happy years. He was part of an excellent team, successfully growing the business, and helping them to take advantage of both new build and refurbishment market opportunities, culminating in his appointment as Managing Director in 2015.

In 2018 he was appointed as Managing Director of SFS supplier Framedclad. The time he has spent in EWI has exposed him to a variety of clientele and projects that has given him a better understanding of the lightweight steel market. Paul still can't resist looking at render jobs and wondering whose system it is and who installed it; a habit that will probably never change.

JUDGES COMMENT: *"Since leaving the EWI industry in 2018 I have managed to keep in touch with many colleagues, customers and ex-competitors and delighted to have met up with some of them to take part in the INCA Awards judging process. It's good to see the sector goes from strength to strength in terms of quality and diversity of offer. Some of the outstanding entries made it tremendously difficult to make decisions and I must say that both myself and fellow judges found the process particularly hard this year – a credit to all who entered."*

OUTSTANDING ACHIEVEMENT AWARD

WINNER

Malcolm Kitching Westdale Services Ltd

"Malcolm Kitching has been in the industry longer than I can remember and longer than he is willing to admit. Working with Kilwaughter in the early days he helped develop brick render. A product that has allowed thousands of houses to retain a realistic brick finish without the costs of applying individual brick slips. Done well it is virtually indistinguishable from the real thing and Malcom and his partners at Westdale Services have been doing just that for the past 20 years. One of the most well-respected external wall insulation companies in the North of England."

More recently Westdale Services incorporated Structherm Ltd into its business ensuring the continuity of this iconic EWI brand and unique range of products.

Malcolm is a straight-talking Yorkshireman but for those of us who know him he has a softer lighter side. He is thoroughly deserving of this recognition of his hard work and commitment to quality and innovation in our industry."

Mitch Gee, INCA Board Member

Sponsored by



Construction
Products Group
Europe



IT'S WHAT'S ON THE OUTSIDE THAT COUNTS

The Trusted Choice for Architects, Building Owners and Contractors
Since 1969

FINALIST 2021

Anoopam Mission, Swaminarayan Temple



ARCHITECTURAL DESIGN AWARD WINNER



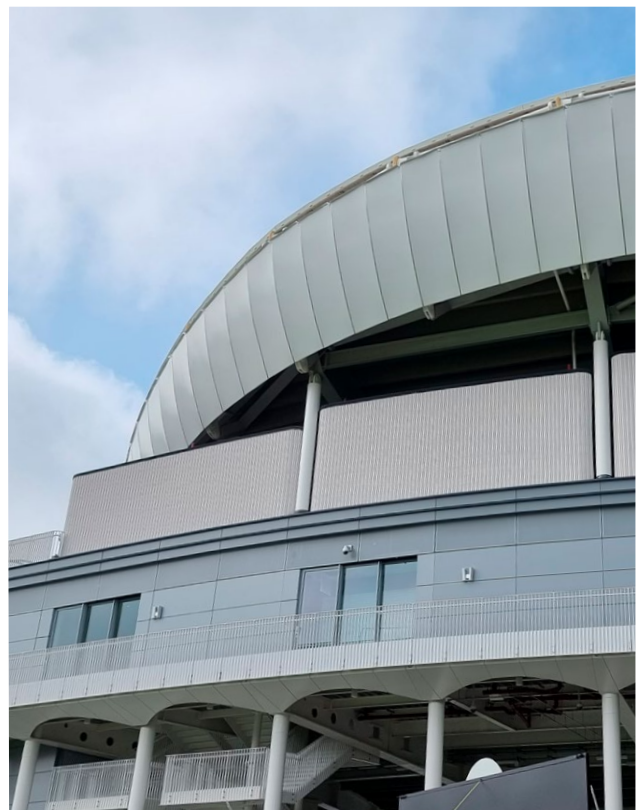
Edrich and Compton Stands, Lords Cricket Ground London

System Designer: Alsecco UK Ltd

Ecomin 400, recommended by Alsecco, as a system to address design challenges encountered on this very prestigious and challenging scheme. The system was applied to the external facades of the Concession Pods on the new Compton and Edrich Stands at the 'iconic home of cricket'.

ISG Construction contacted Alsecco for help when it became clear that their original cladding proposal of forming tight and sweeping curves on the new stands would not work. Alsecco's Ecomin 400 system, incorporating fluted white ceramic tiles was selected to achieve the desired effect of a striking approach to the spectator stands alongside the practice nets and playing area, with equal attention given to both the design of the front and rear of the stands.

The ceramic walls of the new stands, positioned either side of the media centre, needed to completely match the curvature of the spectacular white roofs. The under construction SFS system was faceted, so the roof lines had to provide the datum for the exterior walls. To achieve this, the use of string lines ensured exact positioning. Lamella mineral wool boards were used to convert the faceted cement particle sheathing boards into a smooth curve. As a result, the expertly completed Ecomin 400 system curves beautifully to complement the white roof coverings and architectural ironmongery, as well as contrasting with the grey flashings and wall panels.

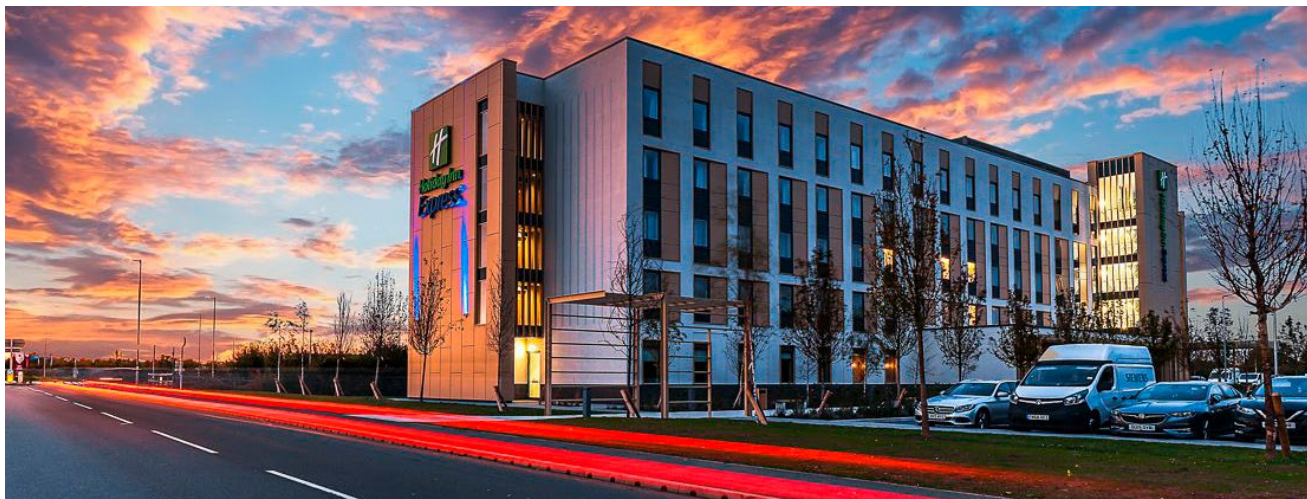


Teamwork between system designer, installer and client culminated in a solution to an original cladding proposal which simply would not have worked.

The scheme demonstrates the versatility of EWI as well as the teamwork between installer and system designer to achieve a truly outstanding finish.

ARCHITECTURAL DESIGN AWARD

HIGHLY COMMENDED



Bicester Gateway Hotel

Bicester

Contractor: RFL Façades Ltd

System Designer: Mapei & Knauf

An essential remit for this Hotel, located in a prime position, was the provision of a high-quality finish. The proposal being a white render system to meet the architectural intent of smooth bright elevations complimented with golden feature metal window pods.

The system incorporated various aluminium profiles and bracket detailing, designed to create robust protection against weather. Flexible sealants were carefully applied at junctions with other materials and around penetrations. APU beads were used around window pods to provide a clear finish.

Feature recesses to frame window openings were formed by using various thicknesses of insulation and corner system profiles to create straight and bold lines.

The system was applied to a lightweight steel frame / board substrate and isolated areas of concrete. A mix of 200mm and 150mm FRONTROCK stone wool insulation, supplied by Knauf was applied in a balanced orientation across the elevations to achieve a weighted U-value of 0.18 W/m²K, with 50mm insulation locally applied in the steel frame zone.

Irregularities in the substrate were overcome by spanning boards over concrete slabs. Fire barriers, to meet fire regulation requirements, were installed between boards and concrete slabs.

Mapei render coatings, applied by hand, included colour Silancolor "T" 1.5 FMO to main areas, with feature vertical strips painted in Silancolor "T" 1.5, colour ref. RAL 7047.



Strips on the north elevation were masked off and painted as a 'value engineered' technical alternative to aluminium fins. Water penetration and movement of fin fixings penetrating the EWI system was a major concern. The painted feature proved to be both technically superior and cost effective.

In addition to the EWI system, RFL Facades Ltd designed and installed flat, chamfered, and extruded Aluminium Rainscreen Cladding with feature fins in addition to windows, curtain walling and entrance doors. An envelope installation featuring EWI and Rainscreen Cladding.



NEW BUILD – INSULATION / RENDER FINISH WINNER

Anoopam Mission – Swaminarayan Temple Uxbridge

System Designer: Tremco CPG UK Limited – Dryvit UK

Anoopam Mission – A place of tranquil within the bustling London Borough of Middlesex

Established in 1978, located within the suburban town of Uxbridge. Home to religious figures practicing the Hindu faith, one of many sanctuaries located around the world, however, the only one based in the UK. Their Mission is serving God by serving humanity by working in areas of Health, Education, Relief, Rehabilitation, Social Welfare, Spiritual and Cultural activities.

An important consideration was the end aesthetics of the building with the client wishing to match the features of an Indian Temple. Careful consideration was necessary to ensure the EWI system achieved the desired U-Value of 0.24 W/m²K, whilst emulating the natural stone effect within a traditional place of worship.

The architect and client specified Dryvit's Outsulation System combined with a Limestone texture finish, selected for its long-term durability, energy efficiency and adaptability.

Using preformed insulation shapes, the approved installer LB&F worked to the Dryvit specification achieving a serene building for members of Anoopam Mission.

However, there were technical difficulties to overcome. Dryvit technical experts collaborated closely with all parties involved to ensure they didn't impact on project delivery. Due to the

large scale EWI features, new fixings were sourced by Dryvit for successful and safe installation, whilst LB&F worked to ensure the depth of profile matched site specification requirements.

Cayleigh Shanks, Dryvit commented, *"A fascinating project to be involved in. I not only discovered what can be achieved with Dryvit Shapes, but also uncovered an understanding of a different culture."*

"The building needed to reflect the internal atmosphere – quality workmanship and tranquillity. This is why we partnered with LB&F who were well placed to achieve the high level of attention to detail."

"Outsulation enables existing buildings to meet stringent energy efficiency requirements, and being a charitable organisation, cost efficiencies during and post installation were an important consideration. Offering a Dryvit speciality finish, enabled the architect to replicate a limestone finish at a fraction of the cost."

Dan Lear, Director of LB&F added, *"The installation of EWI at Anoopam Mission is arguably one of the best projects LB&F have been involved in. The architects pushed the boundaries of EWI systems and Dryvit's Outsulation with specialist finish, lived up to the demanding requirements."*

"The Anoopam Mission was one of the most technical, bespoke and detailed projects we have undertaken in thirteen years of trading. However, a combination of expertise, patience and attention to detail produced a fantastic finish."

The community at Anoopam Mission, believe that life and where we live should reflect, *"truth, love, devotion and compassion."* Our speciality finish encapsulates these practices allowing the outside world a glimpse of the tranquillity that lies within.

Sponsored by:



NEW BUILD – INSULATION / RENDER FINISH

HIGHLY COMMENDED

The Links Studios & Apartments Porthcawl

System Designer: Wetherby Building Systems Ltd

Effortlessly merging new with the old... 'The Links' in Porthcawl stands proudly overlooking Rest Bay, South Wales's golden sands. The 136-year-old former rest hotel, transformed over two phases (refurbishment & new build) to create seventy-one luxury apartments.

This historic original building, designed by John Pritchard, with the elevated coastal location at the core of his plans, Acorn Property Group had to ensure the design of the new phase would sympathetically blend in with the original listed building.

By being involved in the initial refurbishment, Wetherby Building Systems, were delighted with the invitation to join phase 2 - 36 new builds constructed behind the original building, the objective to bring the former Grade II listed mansion back to life, aptly named 'The 18th', a homage to the homes overlooking the famous golf course.

Acorn needed a system to achieve the best thermal performance, be aesthetically pleasing with the added challenge of new buildings blending in with old, whilst able to withstand severe exposure associated with cliff top locations. That in mind, they selected a Wetherby Rail Fix System, robustly assessed to work in combination with a variety of build types, offering excellent thermal efficiency and a wide range of finishes.



The main structure of the new builds is concrete /sfs infill, 100mm Rockwool Flexi insulation slab fitted between steel studs, Wetherby EWI system comprising 12mm Cement Particle Board (CPB), 25mm Cavity Rails fixed directly to CPB / steel frame, 110mm Stone Wool Insulation, Heck K+A Scrim Adhesive, Reinforcing Mesh, Primer and Four Seasons Render. The main and advantageous components of the Wetherby EWI system is the Rockwool Stone Wool insulation, a semi-rigid insulation board, certified as A1 non-combustible, therefore unlikely to give off significant toxic smoke or promote flame spread when directly exposed to fire.

Wetherby Four Seasons Premium Silicone Render, is designed to combat adverse UK weather conditions by offering significant 'improved' resistance to rain, reducing the risk of damage caused by wash-off following application and during the curing process. Four Seasons Render, applied at an ambient and surface temperature of 1 to 30°C, with relative air humidity of up to 95%, increases application productivity. An ideal finish for a project with major exposure to the elements.

The finished building achieved a fantastic U value of 0.18 W/(m²K).

Robin Squire, Regional Managing Director - *"We are delighted to be breathing new life into this site, delivering bespoke high-quality homes for a new community to enjoy."*

Sponsored by:





NEW BUILD – INSULATION / BRICK, CLAY, CERAMIC, OR STONE FINISH

WINNER

Howard Gardens Cardiff

System Designer: SPS Envirowall Ltd

Contractor: Build-Therm Services Ltd

Student living at its best...

Howard Gardens, a brand-new £20 million development in Cardiff offering 390-bed student accommodation conveniently close to the city centre shops and bars with excellent transport links to Cardiff University, University of Wales, and Cardiff Metropolitan University.

Occupying half of the square in Howard Gardens, the former bowling green and club pavilion is now home to a series of four and five storey accommodation blocks with the focal point being an eleven-storey block surrounding a courtyard and exhibiting an authentic looking brick façade suited to the local environment.

SPS Envirowall were invited to propose an external wall insulation system fixed to a hybrid steel frame and SFS project. The selected system was 'Wall System 1' expertly installed by Build-Therm Services Ltd. 150mm mineral wool insulation was used across 3000m² of the external facade and completed with SPS Envirowall 'SpeedySlip' flexible bricks creating a superior finish with perfect consistency throughout.

Having had experience with previous phases of the build, SPS Envirowall were able to meet the challenge of colour

matching the brick slips for the third phase. Flexible brick slips are an excellent alternative to traditional bricks and as in this case, an ideal solution for developments with limited site space.

SPS Envirowall's flexible brick slips are lightweight and boast an A2-s1, d0 fire-rated classification in accordance with BS EN13501-1, achieving the demanding fire safety standards required for the external cladding. An ideal solution for use on high rise building projects; new build and refurbishment.

The building's façade highlights brick slip colours 'Red Bradgate Claret' and 'Staffordshire Blue,' expertly matched by our specialists. The use of multiple brick colours from our extensive brick slip range, the new building is in-keeping with the aesthetics of the surrounding area.

SPS Envirowall, part of the Benx Group of companies, are key cladding suppliers and therefore able to offer a sole source of products and customer support to cover the life of the building. The benefit of this to our clients is reduced risk when choosing and designing the façade for your project.

Our mission - To provide a 'Golden Thread' for our clients, a circular approach to accountability and provenance for our products and services.

NEW BUILD – INSULATION / BRICK, CLAY, CERAMIC, OR STONE FINISH

HIGHLY COMMENDED

Pocket Living Development Barking

System Designer: Sto Ltd

This Pocket Living residential development in Barking features highly effective thermal performance and an attractive appearance thanks to an integrated package of insulation and exterior façade products provided by Sto. The StoTherm Mineral external wall insulation system, Sto-Rotofix Plus fixings and Sto Resin Brick Slip façade finish were all specified for the project.

The development includes two residential blocks, which are predominantly four-storey, rising to six floors at certain points. These were built using off-site prefabrication methods to reduce disruption to the surrounding area during construction.

"When it came to thermal performance we wanted an insulation solution that would be non-combustible and compatible with the off-site approach," comments Matt Watts of Reed Watts architects. ***"The quality of the system was also critical as the building had to meet a wide range of performance criteria, and the StoTherm Mineral external wall insulation system was able to satisfy this."***

"We worked with Sto to refine the texture and colour of the bricks. From a visual perspective this allowed us to tie in the development with neighbouring buildings, including an adjacent Victorian waterworks."

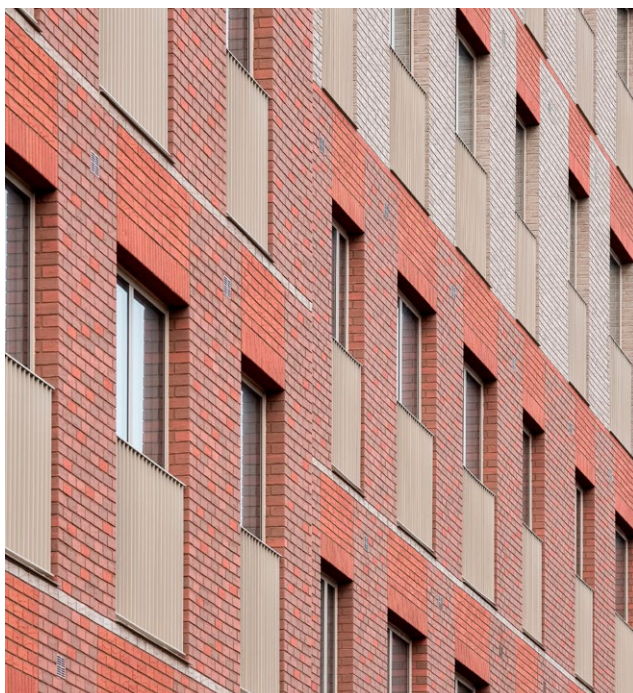


Photo credit: ©Fred Howarth



The BBA-certified StoTherm Mineral external wall insulation system incorporates durable mineral-fibre boards which provide outstanding thermal insulation and unrivalled fire protection. They are strengthened by a reinforcing mesh which increases their resistance to impact damage.

"We installed these using the Sto-Rotofix Plus fixings," adds Steve Beale; Sto authorized installation specialist. ***"The off-site nature of the buildings' construction meant that the boards were applied to a secondary lightweight steel frame, and the Rotofix system was perfectly suited to the task."***

The unique Sto spiral fixings are compatible with many different substrates and can be adjusted after installation to accommodate any unevenness. This allows boards to be installed without any additional expansion joints, and creates a smooth, even surface ready for finishing.

The Sto resin brick slips are manufactured from synthetic render, and combine durable weatherproofing with a realistic, simulated brick appearance.

Fully compatible with Sto EWI systems these lightweight, vapour-permeable slips offer a virtually unlimited range of design, size and colour options, and are an approved finish in a BBA certificate, as a result of thorough R&D testing.

The Pocket Living development offers 78 affordable one-bedroom flats to local, first-time buyers. It incorporates secluded courtyard gardens, an allotment area and other outdoor social spaces. It also features a shared home-working space for use by the residents.

REFURBISHMENT – INSULATION / RENDER FINISH

WINNER

Fitzwarren Court Salford

System Designer: K Systems Ltd

Contractor: Hamilton (Building Contractors) Ltd

In July 2020, K Systems completed a major refurbishment of Fitzwarren Court, one of the highest residential buildings in Salford, Manchester, delivering a modernised aesthetic and improved thermal performance.

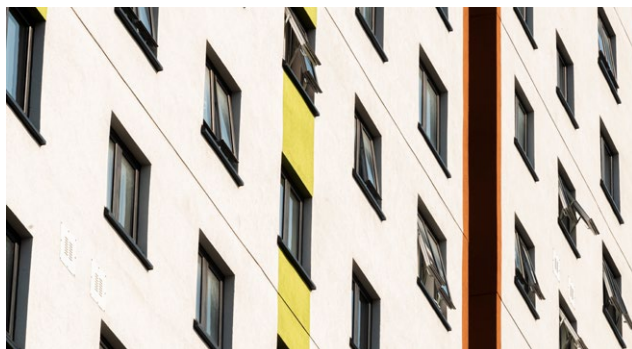
A mainstay of the Salford skyline since the 1970s, this 23-storey tower block was scheduled for demolition before Salix Homes committed funding for its refurbishment and challenged K Systems to inject a new lease of life into the property.

Extensive evaluations of systems and materials took place with Hamilton Contractors to identify the best combination to:

- Achieve a clean, contemporary finish
- Improve the u-value of the property
- Ensure compliance with building regulations in England for high-rise buildings

By law, any building exceeding eighteen metres in height must have walls comprised of non-combustible materials. That made the M Silicone system the ideal option for Salix Homes due to its outstanding A1 non-combustible fire rating, delivering optimal safety, and providing peace of mind to residents.

K Systems mineral wool insulation also generates exceptional thermal performance, has excellent acoustic properties, and ticks many sustainability boxes due to its environmental



Sponsored by:

TRUELINE
PRODUCTS



credentials, testament to its popularity within the construction industry and further evidence as to why it was selected for this project.

The client desired a clean, slick finish whilst residents, involved at design phase, requested a more contemporary aesthetic than the previous blue and green façade. Renowned for delivering exactly what the client wants, K Systems applied a unique combination of VBriQ acrylic brick slips and Silkolitt render finish in contrasting colours to achieve an eye-catching and textured exterior.

This combination not only pleased the eye but also the pockets, being one of the most cost-effective solutions on the market.

The refurbishment, taking place at a time with some Covid restrictions still in place wasn't without its challenges. However, as with every project, K Systems' technical teams remained on-task and committed to delivering excellence, making regular site visits to guarantee the highest standards of workmanship, including:

- Old expansion joints and drips at lintels all dubbed out
- Fire fixings secured through mesh and panels
- Bespoke vented gas plates fitted
- Joints were accurately sealed
- No undulation of surfaces had occurred

Through expert vision and innovative products, K Systems delivered an outstanding refurbishment and proudly played its part in the regeneration of this deprived area in Salford.

REFURBISHMENT – INSULATION / RENDER FINISH

HIGHLY COMMENDED



Blackstoun Oval Paisley

System Designer: Structherm Ltd

Contractor: Procast Group

The refurbishment of solid walled properties, located in Paisley, Glasgow stained from decades of weathering pollution and algae. It was clear from the condition of the buildings that refurbishment was essential as substantial cracking was evident in the render, visible damp, and poor thermal efficiency.

Renfrewshire Council's remit was that the project design had to meet the new PAS2035 standards. Structural surveys and pull-out tests required to confirm the Structherm BBA certified system was fit for the purpose.

Enabled and installed by Procast, to satisfy PAS2030:2019, involved extending the roof line, fitting insulation below dpc, and modifications to surface mounted services to maximise thermal efficiency.

To ensure that the width of the external staircases would meet building regulation requirements, our design team specified a 60mm phenolic system to match the thermal efficiency of the 90mm EPS system. High density, moisture resistant, EPS insulation applied below DPC level to fully encapsulate the buildings, prevent condensation, and heat loss all in accordance with new PAS2035 requirements.

Duncan Smith, Renfrewshire Council - *"These houses are one hundred years old. This project shows that retrofit, and a holistic approach to energy efficiency and asset management, can produce a really positive outcome and look as good as new. The project, as delivered by our project management colleagues, is an excellent product and one that we are incredibly proud of, both from an asset and energy perspective."*

Both Structherm and Procast rose to the challenges of the project and produced an aesthetically pleasing effect that realised the client's vision.

This project highlights exemplary work towards a greener future where clean energy and energy efficiency measures are introduced into a single project using the PAS2035 'Whole House Approach'.

Northway and Hodder Fleetwood Fleetwood

System Designer: Alsecco UK Ltd

Regenda Homes is investing £40m into four estates across Fleetwood in a bid to improve living standards for residents. The renewal programme includes windows, doors, and new roofs alongside EWI packages. The latest phase of the 5-year project is houses and assisted living for the elderly in the Northway area of Fleetwood.

The properties are a combination of Victorian brick solid walls, or cavity wall construction, cavity insulation removed, and voids remedied, prior to the installation of Alsecco's Ecomin 300 system.

Installation has required significant attention to detail to avoid cold bridging, including an EWI system below dpc level.

By using Alsecco's lightweight Meldorf brick slip to complement the render finish, the finished facades match the local vernacular of render and brick found throughout this region.

With five hundred properties completed since the scheme began, this remains a successfully delivered programme bringing regeneration to the area, significant bill savings, and increased comfort to the residents.



Regenda Homes said: *"We are committed to investing in our communities and ensuring our residents live in homes of the highest standard. Along with improving the quality of our homes, the project will have major health benefits and create employment opportunities where all can thrive. The investment is part of our 10-year vision for Fleetwood, created following engagement with stakeholders, communities and partners".*

Garry Payne, chief executive of Wyre Council, said: *"We are incredibly proud to work in partnership with Regenda to deliver these much-needed homes. The new homes will provide high quality, secure homes for older residents."*

Sponsored by:

TRUELINE
PRODUCTS



REFURBISHMENT – INSULATION / BRICK, CLAY, CERAMIC, OR STONE FINISH

WINNER

Palmyra House Warrington

System Designer: Aliva UK Ltd

Contractor: Hamilton (Building Contractors) Limited

Architect: Whiteley Eaves Ltd

Aliva UK's External Wall Insulation System has transformed an old, dysfunctional office block into high-end residential apartment blocks and commercial spaces for Torus Developments.

Briefed by INCO Contractors, Aliva UK provided a cost-effective External Wall Insulation System to refurbish and thermally improve an existing 1960s concrete framed office block in the heart of Warrington.

The system had to achieve the aesthetic that had been approved by local planning officers including lightweight brick slips, feature cills, heads and reveals to replicate stonework as well as a feature parapet.

Aliva UK worked closely with INCO Contractors and introduced Hamilton (Building Contractors) Limited to carry out the installation of the External Wall Insulation System.

The existing building was formed by a concrete frame in need of concrete repairs; a brick infill wall with a minimal cavity behind creating a poor U-Value of 1.2W/m2k.

Aliva UK supplied their Termok8 Minerale System comprising of 90mm Mineral Wool insulation, reinforced cementitious basecoat render and a lightweight brick slip to achieve 0.28W/m2k.

The lightweight slips consisted of a red multi and a buff-coloured slip and feature heads, cills and reveals. The end result being further complemented by projecting feature bands formed using a thicker section of Mineral Wool insulation with a textured finish and taped to replicate a stone joint. All of which was approved by the local authority planning department and the client.

The area of Palmyra Square has been transformed with the addition of this newly refurbished building, complying fully with BBA Certificate 11/4841.

Sponsored by:



REFURBISHMENT – INSULATION / BRICK, CLAY, CERAMIC, OR STONE FINISH

HIGHLY COMMENDED

Crosby Gardens

Crosby

System Designer:

Aliva UK Ltd

Contractor:

Hamilton (Building Contractors) Ltd

Architect:

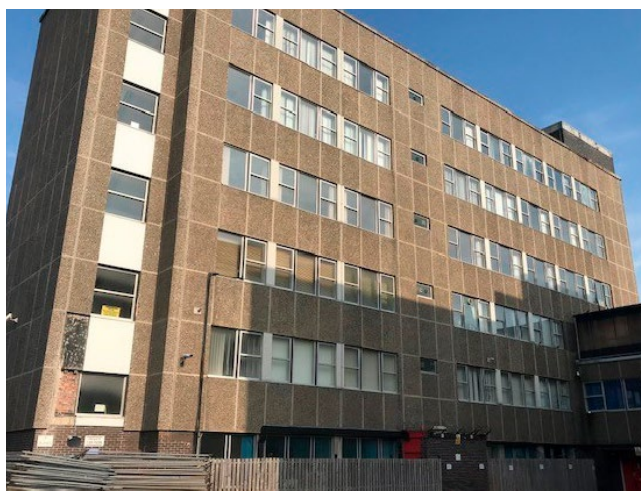
Falconer Chester Hall

Aliva UK were tasked by LaMorada Construction to provide a cost-effective External Wall Insulation System to refurbish and thermally improve an existing 1960s concrete framed office block in the Wirral. The remit being to transform into high-end residential living.

The system had to achieve the traditional brick aesthetic that had been approved by local planning officers with a lightweight brick slip chosen for its visuality, speed and, significantly, as a value engineered, commercially competitive alternative to a complete new build.

Aliva UK worked closely with LaMorada Construction and introduced Hamilton (Building Contractors) Limited to carry out the installation of the External Wall Insulation System.

The existing building was formed by a concrete frame in need of concrete repairs; a brick infill wall with a minimal cavity behind creating a poor U-Value of 1.3W/m2k.



Aliva UK supplied their Termok8 Minerale System comprising of 100mm Mineral Wool insulation, reinforced cementitious basecoat render and a lightweight brick slip to achieve 0.18W/m2k.

The lightweight slips consisted of a red multi slip with a pressed aluminium feature band at each slab level, supplied by Aliva UK, all of which were approved by the local authority's planning department and the client.

A new penthouse was also added to the top level of the building, finished in Aliva UK's Textured EWI; white.

Completed in February 2020, Aliva UK's innovative approach transformed a tired, dated office block on the main road through Crosby into a block of high-end apartments, complementing the redevelopment of the local area. The project has BBA Certificate 11/4841.

Sponsored by:





RENDER ONLY WINNER

Slouchlaw Bay Stranraer

System Designer:
PPG Architectural Coatings Ltd /
Johnstone's Trade Stormshield

Main Contractor:
J & J Runcie Plasterers Ltd

This brand new purposely built family home is set in the unspoilt landscape of Corsewall in Southwest Scotland. The stunning location called for a build that would complement the beautiful backdrop that is bounded by north and west by sea. The exterior of the rotunda property finished to the highest of specifications using a BBA certified Johnstone's Trade Stormshield Full Silicone Render 1.5mm Finish.

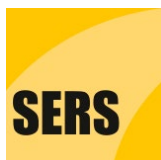


The property location was a key consideration when picking a suitable exterior finish. Given the buildings coastal location the rendering team knew that they needed a high-performance render system that offered both aesthetics, but that would also stand up to harsh weather conditions for the years to come. Therefore, a Full Silicone Render System from Johnstone's Trade was chosen. This modern high-performance system, certified by the BBA, offers enhanced durability, giving the clients peace of mind their new property will stand the test of time and endure the harsh coastal weather conditions.

Another key consideration, which demonstrates the exceptional work completed by the rendering team, was the unique rotunda shape of the building. Using their expertise in render application to ensure the property was completed to a superb standard, with a smooth finish.

The striking property fits in perfectly with the beautiful backdrop of Corsewall and the views across the sea, thanks to the dedicated team of renderers and their hard work, and the high-performance Render Systems from Johnstone's Trade.

Sponsored by:



RENDER ONLY

HIGHLY COMMENDED

Castle Approach, Tregenna Estate Cornwall

System Designer: Saint-Gobain Weber

Nestled within the 72-acre Tregenna Estate, Castle Approach, is a new development offering stunning views over St Ives Bay and the peaceful grounds of the estate gardens.

The lodges are positioned in a crescent shape to provide residents with sea views. Each lodge is built using a timber frame system with a masonry ground floor structure. The buildings were insulated with 140mm polyisocyanurate board (PIR) within the frame to offer an efficient thermal barrier and completed with a render carrier board. The whole structure was then rendered. A further 175mm of PIR board was used in the floor and 150mm in the roof space.

"It was important that we used a render that would withstand the elements over time, particularly as we had chosen such a light-coloured render," said Mike Bradbury, architect for the development. "Being by the coast and surrounded by trees, we wanted to prevent algae growth and discolouration of the render."

Phillip Powell, regional applications manager at Weber, is part of the technical team that has been supporting Tregenna Estates during the construction of the lodges.

"We recommended that the applicator used weberend MT, a BBA approved system for use on render board systems. It incorporates weberend LAC, a lightweight base-coat render commonly used in our webertherm XM EWI system, meshcloth reinforcement and a decorative finish of webersil TF," said Phillip. "This combination of



products is particularly suitable for this project as the weberend LAC is polymer-modified which allows some flexibility, a necessity for timber frame systems. Using this with the webersil TF, a silicone based textured finish, makes it much more resistant to the type of weather experienced in these coastal areas.

"For each property, an initial 3mm pass of weberend LAC was applied, followed by meshcloth reinforcement and then a second 3mm pass. A coat of weber PR310, a render primer, was used before applying a final finish of webersil TF in Winter White."

The technical team at Weber stayed in touch with the team at Tregenna Estate throughout the construction of each lodge, sourcing a local recommended installer to ensure the products were applied correctly using best practice methods.

Neal Peek, contracts manager at Tregenna Estate, said: *"From the moment they stepped on site, the service provided by the Weber team has been brilliant. They are always on hand with technical advice and have visited the site regularly."*



Sponsored by:

SERS



Waterside Gardens Wigan Pier

System Designer:
Wetherby Building Systems Ltd

The future of homebuilding...

Iconic Wigan Pier now has the addition of exciting contemporary canal side living for its new residents as part of wider regeneration project, built using modern methods of construction designed to be a more desirable place to live. Step Places loved the idea of utilising latest technology to help customers live more sustainable lives so opted for Wetherby's Modular Façade System finished with brick slips. By moving the build process into a factory, every component is built to a precise standard and rigidly monitored. MMC means less wastage, and less vehicles visiting site reducing emissions, noise, and environmental disturbance.

The client opted for Wetherby's Modular Brick Slip system using a unique interlocking design on 1200mm x 1200mm high-density EPS insulation boards, highly resistant to heat flow and moisture penetration. The steel frame pods were layered with cement particle board and timber battens, with the insulation boards mechanically fixed onto the battens. The brick slips were fixed using the insulation rib as a guide with brick slip adhesive. Once dry, pointing mortar was added to finish the look of the brick façade.

The eco-friendly modular housing came virtually ready-made and delivered to site with twenty-six units individually lowered into place by crane. Blink, and you will have missed the arrival of the new homes as all pods were delivered to a strict



schedule. Once all the units were firmly in place the façade was completed with Wetherby's real clay brick slips to fill in the feature band joints where the pods were connected in place.

The client wanted an authentic brick façade, preferring off-site construction, whilst wanting to achieve maximum energy efficiency. Wetherby offered all three. The project was completed with Wetherby's brick slips including Red Multi Waterstruck and feature bands consisting of Blue lbstock for contrast.

The last time there were homes overlooking the canal near this point, albeit the backs of them, was in the 1990s, a great advantage for the new homeowners.

Step Places development director Gareth Smith said: ***"We are the first in the Northwest to deliver low carbon, energy efficient living and the setting of Wigan Pier for these canal side houses is perfect. Fully built off site, brought to site and craned in. The idea is that by building off-site the ability to deliver quality homes is multiplied exponentially due to the factory setting as you are not building in diverse types of weather. The actual erection on site takes approximately one week for the eight houses which are then finished externally with a brick façade making the whole process efficient."***

Sponsored by:





MMC / OFFSITE HIGHLY COMMENDED

Rockfield Mews Anfield

System Designer: Wetherby Building Systems Ltd

The home of Liverpool Football Club has seen its first modular (factory built) homes installed in a street of historic terraced houses, thanks to an innovative EWI system.

Situated close to the Reds' home ground in Anfield the development, known as Rockfield Mews, saw seven new homes built inside ilke Homes' factory and positioned into place by crane into a once redundant and derelict space.

Your Housing Group set out to meet the growing demand for quality, affordable homes and with modular construction continuing to drive innovation due to superior energy efficiency, was the perfect choice.

Wetherby's innovative 'Modular Façade System' was chosen, specifically designed with factory-controlled assembly in

mind. The modular brick slip system uses a unique interlocking, high-density insulation board to provide superior strength, and protection against water ingress. Robustly assessed for impact resistance but with enough movement to minimise damage to the façade during travel. MMC is less wasteful than traditional construction, reduced installation time and the need for skilled labour.

Located on a built-up housing estate with narrow access roads would have been particularly challenging had any other form of construction been used. Modular build was the ideal solution as this allowed all of the units to be completed at ilke Homes' factory before being transported to site. Assembling the homes in factory-controlled settings also meant that they could be constructed to a higher build quality than homes using traditional methods.

When the site was ready for construction, the new homes stored a short distance away, were delivered to site one at a time. Once positioned, the next one was delivered until all fourteen units were in place and complete. This allowed the residents maximum access to their homes and little interference with daily life.

To meet the aesthetic aim of the project the facade needed to include numerous brick colour combinations to compliment the mix of red and yellow bricked houses already on the street, built in early 1880's. The project was completed with a selection of Wetherby's brick slips. At installation stage, a space enough for a vertical brick was left between the units until they were locked on top of each other into place. To create the finishing touches for the façade, the gap was filled on site with contrasting brick slips creating a feature band.

Brian Cronin, Group Chief Executive of Your Housing Group said: ***"This new development is another step forward in the incredible regeneration of Anfield. The modular homes will enable us to deliver quality homes in less time and drive efficiencies."***



Sponsored by:





EWI SYSTEMS / TRADITIONAL FINISHES

WINNER

Dumfries & Galloway Housing Programme

Dumfries and Galloway, Scotland

Contractor: SERS Energy Solutions (Scotland) Ltd

System Designer: SPS Envirowall Ltd

Dumfries and Galloway Housing Partnership (DGHP) has signed a contract worth up to £8 million to invest in new external wall insulation, cavity wall insulation, rendering and roofing for properties across the region. Tenants in around 800 DGHP homes across Dumfries and Galloway will benefit from an improved external appearance, increased energy efficiency, and reductions in the cost of heating their homes as a result of the award of the contract to SERS Energy Solutions (Scotland).

This Contract wasn't without its challenges. Owning around ten thousand properties, identifying the least energy efficient addresses is a dilemma faced by many RSL's with restricted budgets. SERS executed full surveys on 697 houses and 60 flats, to establish: rdSap, cavity fill status, loft insulation position, roof status, heating status, and wall tie condition. Each property was site measured and EPR modelled to demonstrate improvement in rdSAP. The client required individual pricing per address prior to approval. This process

led to a confirmed address list and work scope per property allowing the programme to be by geographic area allowing concurrent delivery.

All works were conducted while the properties were still occupied. RLOs and site managers worked hard to manage the customer interface to keep residents well-informed and safe, as well as ensuring a safe work environment for the operatives.

In an effort to reduce our environmental impact, local sub-contractors were employed where possible, and use of segregated skips to minimise landfill. With help from the system supplier, we were able to recycle all the EPS waste.

External wall insulation system (EWI) was fitted to 562 properties. All gas meters and risers moved to allow for insulation behind to minimise thermal bridging. All roof gables and eaves required extending to accommodate the extra thickness of the EWI system. The system selected, supplied by SPS Envirowall, utilised 90mm graphite insulation, finished with dry dash.

Where feasible, private owners benefitted via funding collaboration with Dumfries & Galloway Council. This improved the amenity of areas and minimised the 'pepper-pot' effect.

At a review, High Client & Tenant satisfaction rates were recorded.

Chairman of DGHP, Robert Higgins, said *"The £8million programme will provide much needed investment in properties across the region and is indicative of the commitment of DGHP to improve tenants' homes."*



ENVIRONMENTAL / ENERGY CONSERVATION WINNER

Blackstoun Oval Paisley

System Designer: Structherm Ltd

Contractor: Procast Group

Whole House Approach...

Renfrewshire Council's vision of an exceptionally deep retrofit to these 1930's houses turning them into houses for the future. Installed by Procast to meet PAS2030:2019, involved roof extensions, insulation below DPC level to fully encapsulate the buildings, and modifications to surface mounted services by removing and fitting insulation behind; designed to maximise thermal efficiency. This project not only realised the clients vision it demonstrated exemplary work towards a greener future where energy efficiency measures can be installed using the PAS2035 'whole house approach'. It was good to shortlist a project where EWI formed an integral part of a wider overall energy solution.

"This project presented a number of challenges and difficulties, all exacerbated by Covid 19 and trying to adapt our working practices to PAS2035. Structherm's unparalleled technical and commercial support from building warrant stage through to completion ensured that Procast were able to deliver Renfrewshire Council's vision, of an exceptionally deep retrofit on these 1930's houses turning them into houses for the future."

Barry Chisholm, Procast

Sponsored by:



TRAINING AWARD WINNER

A.C. WHYTE
& CO. LTD.

A C Whyte & Co Ltd Energy Efficiency Skills Academy

Globally we have identified a climate emergency and Scotland have committed to the toughest statutory obligations of any nation in the world, by committing to reach net zero by 2045, reducing fuel poverty and reducing child poverty by 10% by 2030, the goal: a Just Transition.

In order to achieve these ambitious targets, Scotland have identified the need to train and equip a 'carbon army' creating up to 22,000 jobs by 2028.

In 2017, A.C. Whyte launched the first of their Energy Efficiency Skills Academies in partnership with West College Scotland and the second in 2021 with South Lanarkshire College.

Initially, the course launched with a focus on external wall insulation, where the Scottish Government have outlined a commitment to rapidly scale up deployment of zero emission heating systems, such as heat pumps. The Academy model is a people centric, targeted skills intervention that builds workforce



capacity and capabilities in the energy efficiency sector. It offers:

- **Thirty-six local candidates from deprived areas; an opportunity to learn a trade**
- **Attain a recognised qualification**
- **Full time, permanent employment as EWI Installers on successful completion**



"This opportunity means as much to me, as it does my family. I now have a qualification, a trade and a career that satisfies me."

Josh English, A.C. Whyte
EWI Installer



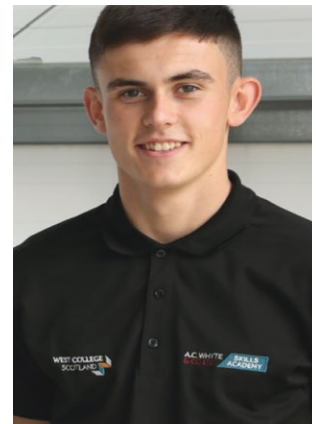
We complete dual recruitment activity with both colleges and to date have secured twenty candidates, who having completed the industry led curriculum, already share our core values and behaviours.

The candidates spend 50% of their time in college and 50% training on site under the supervision of our most qualified installers. Mentoring the Akademos has provided our team on sites with the opportunity to further shape their future.

The energy efficiency, whole house approach works that we deliver is primarily in deprived areas where residents suffer in fuel poverty. As an organisation, we believe we can ensure works are delivered by locally trained individuals who will benefit from upskilling and job opportunities, working within their community and contributing to its economic development.

"This opportunity was a real start for me in life. I'm excited for the career development opportunities it will bring and to see what my long-term future will look like."

Kenny Mearns, A.C. Whyte
EWI Installer



Since 2017, we have achieved:



42

Akademos
Attended
Academy



20

Currently
Studying



22

Graduated



20

Employed
- Delivering Local Energy
Efficiency Projects

Akademo, Rennie training on site told us:

"From start to finish, I was made to feel welcome on site, I was spoken to with manners and respect and left with invaluable knowledge and skills."

Sponsored by:





Keeping fire at bay

**A product range to suit all social housing requirements
The safest EWI systems that make a difference.**

SOLTHERM ULTIMATE HD

- Indestructible system
- Both ETA and BBA approved
- Proven to have at least 30 year effective life
- A2-s1, d0 fire rating - approved for use above 18m
- Fixed through scrim demonstrating industry leading wind load resistance.
- Unique reinforcement provides unrivalled impact resistance.

SOLTHERM ULTIMATE A1

- Fully certified A1 fire rated EWI system
- Non combustible mineral wool based system
- Designed to ensure optimal vapour permeability and resistance to precipitation
- Highly resistant to day to day damage.
- Ability to perform against a high degree of movement, thermal expansion and contraction.

SOLTHERM FSC

Innovative Fire Safe Technology

- Impact resistance
- Low water absorption
- Render adhesion strength
- Thermal properties
- Economic & fire safe alternative to mineral wool
- Utilises a new advanced insulation, ensuring it is the safest and most economical solution.

* All product ranges tested and proven and are ECO eligible

SOLTHERM 75

Innovative and Approved

- Approved for over 75 years by Ofgem
- Innovative ECO solution for EPC 'D' rated properties
- Capability to generate higher ECO funding rates
- A2 fire rated and approved unrestricted in height
- Industry leading weather resistant technology
- Superior wind load resistance, prevents delamination and shear deformation

- Textured effect render
- Bespoke colour matching
- Exemplary thermal credentials
- Vibrant and contemporary external wall finishes

Soltherm offer many possibilities with different types of insulated render that stand up to the elements. Using our own colour match and texturing facilities there is a wide choice available. Exemplary thermal credentials with a sleek aesthetic appeal.



Soltherm External Insulations Ltd

www.soltherm.co.uk ☎ 01908 533 444 ✉ office@soltherm.co.uk



**Fast fix with
weberwall brick**



weberwall brick Realistic, lightweight brick effect

- * Fast fix - 3 times faster than traditional brick slips
- * Lightweight - 1 panel of 20 bricks = to one house brick
- * For new build, MMC or refurbishment projects
- * Range of colours and textures available
- * INCA 2020 Innovation Award Winner



@SGWeberUK



www.uk.weber



specifications@netweber.co.uk

INNOVATION AWARD WINNER

Swifix Ltd

Innovation:
Swifix
Universal
Fixings



SWIFIX have designed and developed a range of fittings specifically for refixing and installing both lightweight and heavy items through EWI systems. The fixings can be used during or after the EWI system installation, providing a cost effective and maintenance-free solution, whilst also ensuring the integrity and protection of the EWI system. Fully tested, the fixings are manufactured from high quality recycled plastic and provide an aesthetically pleasing appearance to enhance newly installed external wall insulation.

Historically the retrofit industry has used timber pattresses for re-fixing items back through EWI systems, which contribute to thermal bridging and will disturb the continuous insulation characteristics. In turn this could create performance issues for the systems in the longer term.

SWIFIX developed a solution that was technically more appropriate than timber and commercially viable, presenting the industry with the option to eradicate the use of timber within EWI, and to improve the overall performance of the installation. As part of the design and development process, SWIFIX sought feedback from system designers who welcomed the innovation and felt the products were a simple and effective solution with many leading system designers now recommending their use providing assurance that Guarantees and Warranties are maintained.

Now established, and with continued annual growth, SWIFIX are being specified in the new build sector by architects, designers, and now supplying a number of market leading MMC solution providers, also in the sector, who use the range of fixings during their construction processes, with the NHBC also recommending the SWIFIX solution.



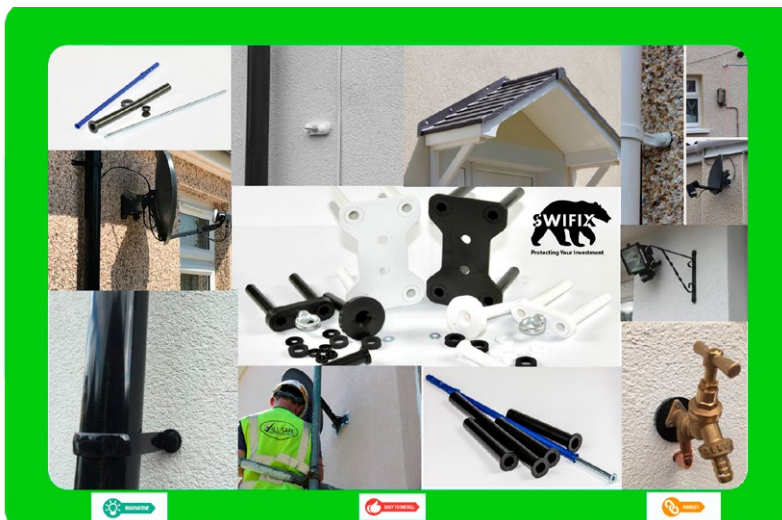
There are five basic fixings, that are versatile and can be used to install a variety of items and compatible with many finishes such as brick slip, render and spar dash with insulation thicknesses from 50mm to 300mm. Tested through 100mm into brick/block and holding substantial weights of more than 50kg's.

All products are manufactured in black and white as standard; however bespoke finishes are available on request to compliment the finished render or any specific requirements including manufacture in Fire Rated Materials. Available direct from SWIFIX Ltd via their on-line store and from various distributors and system providers throughout the UK, with design and technical guidance available.

A Simple yet effective solution -so please make the change and support a British design, that's British Made and Manufactured from (partially) recycled materials, providing the most cost effective solution available.

Sponsored by:

K Systems
Insulated Façades

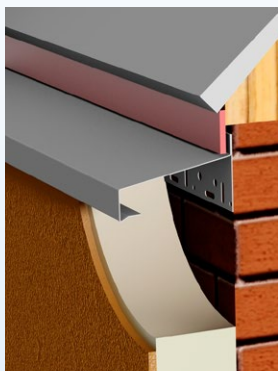


WEMICO

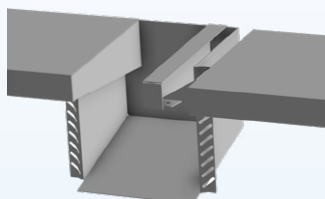
Market Leaders in Trims, Detailing and Solutions for
External Wall Insulation Systems



GRIND IN VERGE TRIM



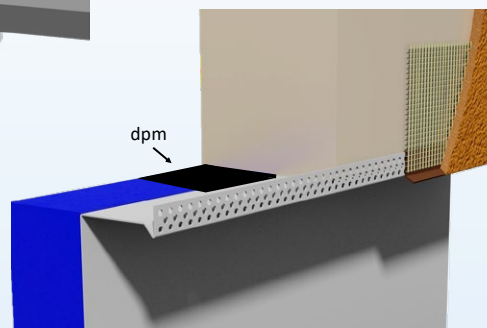
VERGE TRIM WITH UPSTAND



GUTTER BOX

Rigid extruded
polystyrene insulation

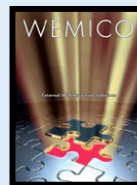
Thermo-Pro®



INSULATED BASE RAIL

Wemico hold a large range of profiles available from stock and project specific to provide robust detailing solutions for hard to insulate areas ensuring a weathertight result. Our **Thermo-Pro®** solutions have the additional advantage of helping to prevent thermal bridging. Our profiles provide the answer to poor detailing and workmanship.

If you would like a copy of our External Wall Insulation Solutions brochure, please contact us.



+44 1562 820123



sales@wemico.co.uk



www.wemico.com

K Systems
Insulated Façades

Interested in **CPD's**?

We can deliver them **online** or
at your **premises**.

Book today!



01744 353 00



k.systems



SHORTLISTED FOR
New Build + Refurb:

COMPONENT SUPPLIER OF THE YEAR AWARD

WINNER

INCA are delighted to present this Award to acknowledge the contribution to EWI made by INCA Component Suppliers. This Award is nominated by INCA System Designer and Contractor members.

This year the Award goes to...

Trueline Expanded Products Ltd



System Designers and Contractor members had this to say about Trueline:

"Deliver on time and deal with problems immediately."

"Service levels are second to none, maintained throughout the pandemic. Excellent performance, backed up with quality products making them the perfect supplier."

"Trueline are always very accommodating and work hard with the supply chain to deliver on time."

"They are a commercially viable 'go to' for difficult fabrication solutions."

"An innovation path that will service our industry for years to come and should be recognised for their innovative endeavours, supply chain and operational supply mechanism."

Sponsored by:



INSTALLER OF THE YEAR AWARD

WINNER

This Award acknowledges the importance of installers delivering quality installations; nominated by INCA System Designer members.

This year the Award goes to...

Hamilton (Building Contractors) Ltd



INCA were pleased to welcome Hamilton (Building Contractors) Ltd to the INCA family earlier this year. Hamilton are one of the UK's leading EWI specialists and since December 1996 have been at the forefront of the delivery of Solid Wall Insulation and one of the largest recognised specialist installers in the UK. With a solid base of construction knowledge and extensive experience in all aspects of design and build, Hamilton are a leading light in the SWI market ensuring the best solution is chosen for clients, and installed to the highest possible standards.

System Designers had this to say about Hamilton:

"Hamilton Building Contractors Ltd are so experienced that they make the system designers life much less complicated. The quality of workmanship and expertise demonstrated is second to none."

"They have a long-standing relationship with Wetherby Building Systems Ltd, common goals, quality application and seen as elite installers in the EWI world. They have developed a niche for strip off and recladding projects under the building safety fund and always pay their bills!"

Sponsored by:



JOHNSTONE'S®

TRADE

STORMSHIELD

IT'S CALLED
STORMSHIELD
FOR A REASON



Johnstone's Trade Stormshield offers a comprehensive range of high performance External Wall Insulation and Render Systems, for a wide variety of substrates. Our systems are designed to provide high quality, long lasting protection for exteriors. Many systems carry BBA certification, giving you peace of mind they will stand the test of time.

To find out more visit www.johnstonestrade.com/Stormshield

