



# Awards 2019

A Celebration  
of EWI Innovation  
and Excellence

## Winners 2019

Showcasing the  
Best in External  
Wall Insulation





# TRANSFORMING CONSTRUCTION

## BUILD UK DOES MORE THAN REPRESENT THE UK CONSTRUCTION INDUSTRY.

By focussing on three strategic priorities, we work with our members and partners to drive real change that strengthens the sector.

Improving  
Business  
Performance

Increasing  
Productivity

Recruiting,  
Training &  
Retaining Talent



For more information, visit [BuildUK.org](http://BuildUK.org)

## Celebrating the Best in External Wall Insulation

The Insulated Render and Cladding Association (INCA) Awards recognise innovation, quality and excellence in External Wall Insulation (EWI) projects delivered by members and their partners over the past year.

This year, members have made significant contributions, improving the energy efficiency of residential properties, theatres, schools and more. We have also seen the introduction of new innovative products and developments in training, all reaching an incredibly high standard.

INCA is delighted to see the high standard of entries this year, and we would like to share them with you in this year's Winners Brochure.

### The Judges

#### Claire Curtis-Thomas

Claire is a former Mechanical Engineer as well as a Member of Parliament, and has a wealth of industry experience. She is also the former Chief Executive of the British Board of Agrément.



#### Peter Rickaby

Peter manages the UK Centre for Moisture in Buildings at UCL. He spent 37 years as a specialist energy and sustainability consultant, sat on the Each Home Counts Implementation Board, chairs the BSI's Retrofit Standards Task Group, and is Technical Author of the domestic retrofit standard PAS 2035.



#### Ruud Van Eersel

With a degree in Marketing and Sales, Ruud has had a professional career since 1985, entirely in PAINT and ETICS business. Since 2002, Ruud has worked as a Sales and Marketing Manager ETICS for DAW SE. He is also the co-founder of Belgian ETICS Association IVP werkgroep ETICS (recently renamed in XThermo.be) and President of the EAE.



### Inside...

Welcome from the Chairman	2
Outstanding Achievement Award	3
Heritage Award	4
Architectural Design Award	6
New Build Award	8
Component Supplier of the Year	10
Training Award	10
Installer of the Year	11
Refurbishment Award	12
Innovation Award	13
Judges' Choice	13

#### Insulated Render and Cladding Association (INCA)

0844 249 0040  
[info@inca-ltd.org.uk](mailto:info@inca-ltd.org.uk)  
[inca-ltd.org.uk](http://inca-ltd.org.uk)  
[@INCAsecretariat](https://twitter.com/INCAsecretariat)  
[#INCAAwards](https://twitter.com/INCAAwards)

### Thank you to our sponsors





# Welcome from the Chairman

INCA – Leading the External Wall Insulation industry.



It has been another challenging year for the External Wall Insulation industry, and the construction industry on the whole. With industry changes like the potential introduction of Reverse VAT, and the continuing uncertainty surrounding the ominous arrival of Brexit, the industry has continued to battle through some turbulent times. Nevertheless, this has not dampened the spirit of our members as we celebrate their successes at this joyous event.

By popular demand, we have returned to an evening black-tie format this year, giving members an excuse to dust down their tuxedos and cocktail dresses. As Chairman of the association, I am honoured to announce the winners and runners up of the INCA Awards this year, and share with you the excellence and quality that our industry is capable of.

Despite the many challenges that face us, there are probably an equal, if not greater, number of opportunities, and I look forward to seeing what the future holds for our association.

**Mitch Gee, INCA Chairman**

## Outstanding Achievement

### Winner

#### Robert Phin – A.C. Whyte & Co.

Bob Phin has been at the forefront of the EWI industry, with a career spanning over 30 years. Bob joined A.C. Whyte in 1984 as a Quantity Surveyor, and within three years became director of the company. Bob delivered all QS, Estimating, Accounting, Job Costing and Contracts Management functions within his role.

In 1999, Bob took over as Managing Director of the company and focussed heavily on social housing. When Bob joined the company in 1984, the turnover was £250,000. After becoming Managing Director in the years between 2002 and 2006, the turnover increased to £13 million. In 2016, Bob decided to go part-time, and handed over the reins of the successful family business to his daughter, Jennifer Phin.

Bob has also been heavily involved in INCA over the years. Bob joined INCA in 2011 and was appointed to the Board in 2014, where he went on to develop a Scottish working group to build awareness of INCA in Scotland and the benefits of EWI with key demographics. Bob's contribution to INCA was vital, as he managed to secure a long-term partnership with Scottish Government stakeholders. Even after stepping down from the Board, he offered technical advice in support of INCA. John Carter, Former Managing Director of Alumasc, said of Bob "[his] career in the EWI industry is legendary and his achievements incredible. There are few, if any, in the industry that would be more deserving of an outstanding achievement award."



**BDA Agrément®** is recognised by NHBC, LABC and Premier Guarantee.

The **BDA Agrément®** process is designed to underpin the 'fitness for purpose' of products and systems destined for the UK construction market.

**BDA Agrément Service**  
for roofing, insulation, waterproofing & façade construction materials, products & systems for the building sector.



**Kiwa Building Products**  
Unit 5 Prime Park Way,  
Prime Enterprise Park,  
Derby, DE1 3QB

T: 01242 677877  
E: [uk.bpenquiries@kiwa.com](mailto:uk.bpenquiries@kiwa.com)  
W: [www.kiwa.co.uk/bda](http://www.kiwa.co.uk/bda)

**"There are few, if any, in the industry that would be more deserving of an outstanding achievement award."**







**Heritage Award**

**Highly Commended**

## Lancaster House Rowley Regis

**Contractor:** Structherm

A project dating from 2009, Lancaster House is a block of flats, externally insulated and decorated with a brick effect render, including a cream and terracotta render finish. The U-value achieved was 0.3, providing significant warmth and comfort for the residents and lifting the appearance, which has been well preserved over the last 10 years.

The judges commented on the good condition that the building has maintained, and were impressed by how after all these years, the colours still look so vibrant.

**"This project has maintained excellent condition over the last ten years"**

**Heritage Award**

**Winner**

## Bradley Lane Newton Abbott

**Contractor:** SERS

**System Designer:** SPSenviowall

Completed in 2008, this building on Bradley Lane was the first example of SPSenviowall's RendaClad system being utilised on a development. Despite the building's exposed location, the render has shown no signs of aging over the last 10 years.

The judges were impressed by the attention to detail in the rendering supplied to this building in order to preserve its appearance over time.







# Architectural Design Award

Winner

## Berry Court Bournemouth

**Contractor:** Square 1  
**System Designer:** SPSenviowall

Berry Court is a multi-million pound new build residential development recently completed by Morgan Sindall. The development replaced an underused car park with high-quality apartments, and offers residents spectacular views across the town.

Completed in May 2018, the development is sympathetic to the Art Deco Heritage of Bournemouth, which has been brought to life by the attractive curved feature of the building. This was achieved by the hard work and skill of the contractor, who worked to the curves using the SPSenviowall system and its EPS boards. Therefore, they are able to be rasped, achieving a flawless, even and curved elevation to this attractive building.

Judges commented on the attractive and crisp detailing of the building, and were impressed by the retro aesthetic.

**“This project has allowed for a high class quality of living in a limited amount of space.”**



# Architectural Design Award

Highly Commended

## St Vincent's Place Sheffield

**Architect:** Hadfield Cawkwell Davidson  
**Contractor:** Hamilton (Building Contractors) Ltd  
**System Designer:** Aliva UK

St Vincent's Place is a modern, six storey student accommodation block, which was delivered against a very challenging design brief. The design by HCD Architects meant that the system had to be flexible enough to accommodate two thicknesses of clay slips to produce the required stepped effect, whilst the rain screen cladding coordinated through Aliva's in-house design team, created a three colour powder coated finish to enhance and contrast with the traditional looking brick work.

The client needed a system that allowed the installation of the façade to be carried out off the critical path, so that the internal works could progress whilst the external works were being undertaken. The system allowed for shorter programme times and a reduction in overall costs over a traditionally constructed building, whilst providing the look and finish required by the Architect and Town Planners.

The judges were particularly impressed with this project as they felt that it set out a good example for the future of EWI, as the project's alternative use to render is where they believe the industry should be heading. They also recognised the challenges that occur when working so closely to a listed building.







## New Build Award

### Shipston High School Shipston-on-Stour

**Contractor:** Weatherseal Façades

**System Designer:** Dryvit UK

The original brief simply required a new teaching block. Through extensive review of the school's estate and cost modelling, a successful new school block provided a contemporary architectural design culminating in a prominent focal building, signifying the school's new main entrance. Due to the building being an institute of education, it was crucial that the chosen cladding had to satisfy the stringent requirements for fire performance. The quality of workmanship and attention to detail delivered a successful install to this prominent focal building.

The judges were extremely impressed by this project and thought it looked incredibly elegant. They commented on the impressive window details, but also how the overall design was simple with an effective minimalist design. They agreed that this building will look great in years to come and it will be very easy to maintain its distinct style.



## New Build Award

### Highly Commended

### Fisherman's Beach Hythe

**Architect:** Guy Holloway

**Contractor:** DS Renders

**System Designer:** K Systems

Fisherman's Beach is a sea front project on the District of Shepway which incorporates a range of building types brought together for a modern and fresh appearance. The project required bespoke detailing to meet the intricate and beautiful design

of the architect, which K Systems finished with Silkolitt+ – a textured 1.5mm grained contemporary lightweight silicone based product, which is ideal for use on insulation boards.

The judges believed that this project demonstrated commitment to modern construction trends. They were also impressed by the complex architecture, demonstrated by the differing sides of the building.





## Component Supplier of the Year

Winner

Last year, INCA introduced an award to celebrate Component Suppliers in EWI, frequently described as the cornerstone of the industry. This award is nominated by our System Designer members. This year, the award goes to...

### Wemico

WEMICO

System Designers had this to say about Wemico:

**"A fantastic range of products and solutions combined with outstanding customer support."**

## Training Award

Winner

This award acknowledges the importance of training to the construction industry, and EWI in particular. The award recognises an outstanding contribution to training.

### Saint-Gobain Weber

Even though 2018 continued the trend seen in previous years with challenging market conditions, it proved to be yet another record-breaking year training-wise for Saint-Gobain Weber. Weber has been given the award this year for its continuing focus on training and bridging the skills gap.



A main focus for Weber this year was to make training more accessible for delegates with learning disabilities. "We wanted to support those with dyslexia, dyspraxia and dyscalculia," Weber Academy Manager, Rob Speke, explained. "We recognised that these conditions are quite common within the construction industry so we decided to present our training differently. For example, we found that just by simply printing things on yellow paper instead of white can be a major advantage for those who are dyslexic because it reduces the symptoms of visual stress and increases reading fluency."

Audited by SWIGA, Weber's training courses are delivered as per the guarantee agency's own recommendations. This further supports the company's belief that training and continuous development to increase skills in the industry is important. It also ensures that the quality, safety and profile of EWI systems across the UK and Ireland continue to rise.

The judges were impressed by Weber's good distribution of training centres across the country, and their continuous commitment to improving training in the sector.

## Installer of the Year

Winner

### Build-Therm Services

Previously known as EcoTherm UK Ltd, Build-Therm Services has grown to become one of the leading façade contractors in External Wall Insulation, SFS, render and cladding. They have completed some fantastic projects over the past year, including Cardiff Bay's Premier Inn, Heathrow's IBIS Hotel, Portsmouth University's Student Accommodation and many more.



System Designers had this to say about Build-Therm:

**"Build-Therm have completed some excellent projects over the last year and always deliver high quality installations."**







## Refurbishment Award

Winner

### Victoria Palace Theatre

London

**Contractor:** Novo Façades

**System Designer:** Sto

Victoria Palace is one of the most famous theatres in London's West End, and has recently undergone a huge face lift costing over £60 million. Externally, the theatre's façades were extended, as was the stage house, and the existing roofscape was completely rationalised. It is clear that throughout the process great care had to be taken to preserve the existing architectural detailing and to reproduce it on the new sections of the building.

The StoDeco range of profiles are manufactured from Verolith, which is a lightweight and easily workable natural material which can be machined to create accurate reproductions of existing architectural details. The resulting profiles have excellent resistance to damage, cracking, weathering and environmental influences and, as in this case, they can be used to seamlessly restore or extend existing building façades. For this project they were finished with StoColor Maxicryl paint, which provides high water-repellence and reliable colour-fastness.

The judges were amazed by what had been achieved in this spectacular project, and thought the completed project was simply breath-taking.



## Innovation Award

Winner

### Saint-Gobain Weber

**Product:** Weberend LAC Rapid

Continuing to be recognised by the construction industry as a manufacturer of innovative high performance products, systems and technologies, Saint-Gobain Weber in 2018 launched its new rapid drying basecoat render, Weberend LAC Rapid.

Along with meshcloth reinforcement, Weberend LAC Rapid plays an essential role in a number of Weber External Wall Insulation systems, including high performance Webertherm XM. One great benefit of this innovative product is that it eliminates the need to apply a primer.

The judges acknowledged that this product would be extremely beneficial for the industry, as it could take up to 72 hours of work off a project. This product is a real value to the industry.



## Judges' Choice

For the first time, INCA has introduced a new award called 'Judges' Choice'. The three judges, Claire Curtis-Thomas, Ruud Van Ersele and Peter Rickaby chose to award this to...

### Shipston High School by Dryvit UK

This contemporary new school has a clean, modern aesthetic with minimalist detail. The judges were particularly impressed by this project, and believe it should receive special recognition for its unique, distinctive appearance.



Winner





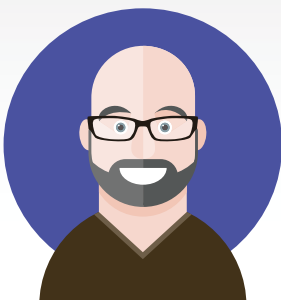
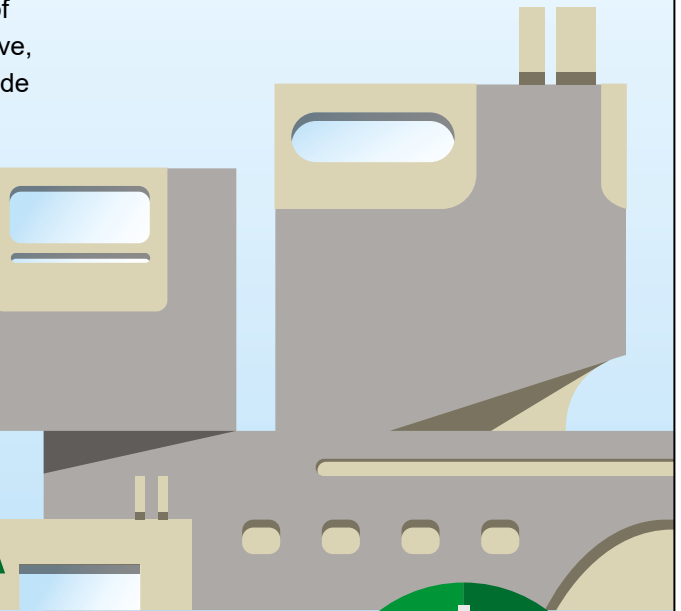
**sps|envirowall**  
TOTAL FAÇADE SOLUTIONS



## A lot will change in the next 60 years. Your external wall insulation system doesn't have to.

At SPS Envirowall we understand architects. So we know that you aren't just looking for value, you're looking for a partner to work with - from the first sketch to the final brick. That's why we work alongside you, through every step of your project to help you get the most out of our external wall insulation systems.

Our wide range of services includes specification, on and off site technical support and project specific detailing. We can offer advice on acoustics and fire protection, as well as help with wind load, u-value and condensation calculation. And our local network of branches means that we can offer a wide range of cost-effective, accredited rendered cladding solution systems for use on a wide range of construction types.



For a quote or to find your local branch  
Call our team on **01535 661 633**  
Email us at [marketing@spsenvirowall.co.uk](mailto:marketing@spsenvirowall.co.uk)



or you can visit us at [spsenvirowall.co.uk](http://spsenvirowall.co.uk)