



Awards 2016

A Celebration of EWI Innovation and Excellence



Award Winners | 2016

Showcasing the best in External Wall Insulation



Sto – Quality, Commitment and proven results



Hop House



Monsoon Forest

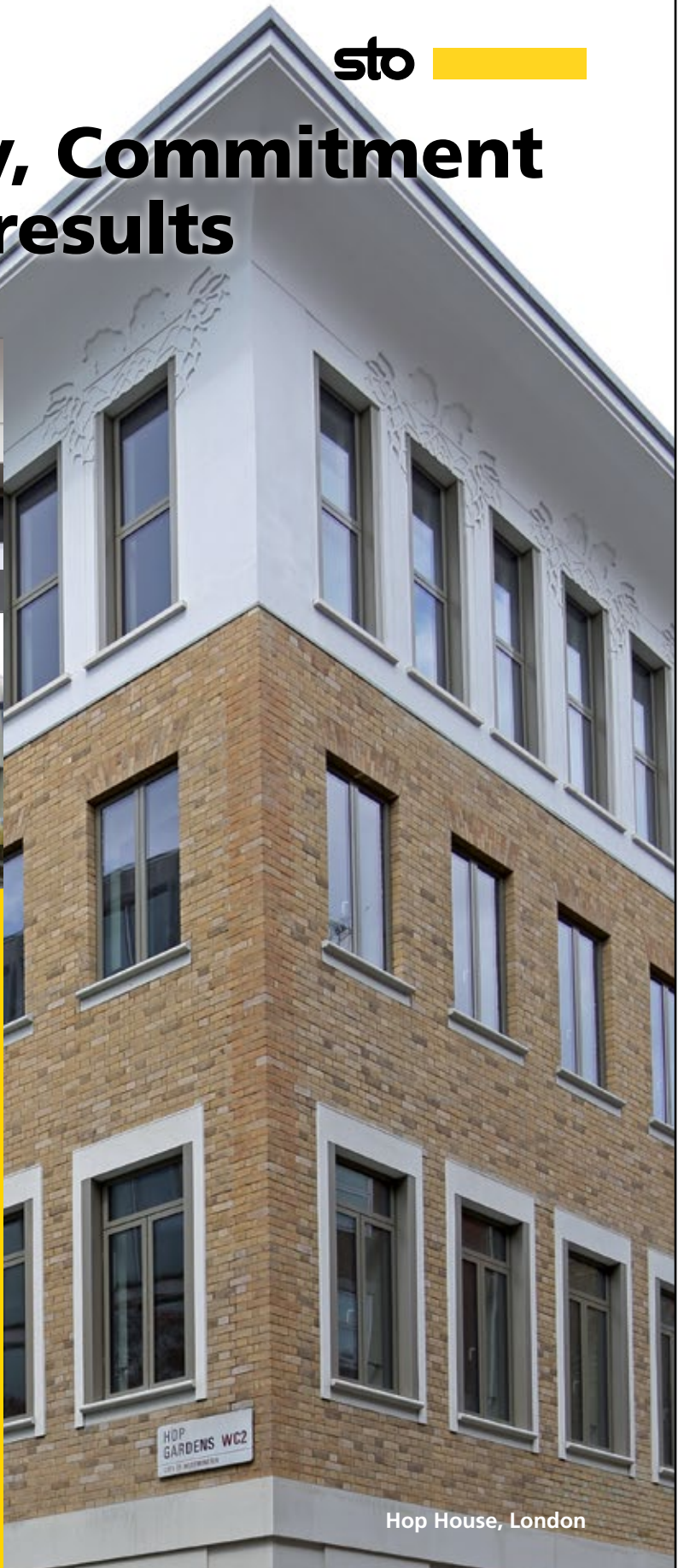
Sto's commitment to achieving the highest standards has helped two of our recent projects reach the shortlist for the 2016 INCA Awards.

Coupled with our commitment to Building with Conscience, our collaborative approach to working with the architects, applicators and end-users helped us to translate detailed design briefs into impressive end results.

The projects also illustrate our wide range of products and services, from the StoDeco Plan boards used to create attractive architectural detailing on the refurbished Hop House apartment block, through to the StoTherm Mineral external wall insulation chosen for Chester Zoo's temperature-critical Monsoon Forest building.

Good luck to all the shortlisted entries in this year's Awards!

Sto – Proud to support the Insulated Render and Cladding Association.



Hop House, London

Sto | Building with conscience.

www.sto.co.uk

A Celebration of EWI Innovation and Excellence

The Insulated Render and Cladding Association (INCA) Awards recognise innovation and excellence in external wall insulation (EWI) projects delivered by INCA members over the past year.

Whatever the project, from residential refurbishment to new build animal enclosures, EWI offers an innovative solution to even the most challenging project. This year's finalists demonstrate the diverse range of innovative EWI solutions which not only meet insulation requirements but can achieve impressive architectural design. INCA members are at the forefront of technical expertise and the winners in particular reflect the highest quality standards in both installation and design.

The Judges

Gearóid Lane (Chairman) - Formerly a member of the British Gas Executive Committee, now co-founder and CEO of AgilityEco specialising in the delivery of energy service solutions to both public and private sector clients.

Claire Curtis-Thomas - With a degree in Mechanical Engineering and an MBA, championed a number of issues on behalf of the construction industry as a former MP and is now the CEO of the BBA.

Mark Elton - CEO of Cowan Eco Design, with over 20 years' experience as an architect, a Passivhaus designer and retrofit innovator, with a key interest in combining sustainable living and design.

Paul Gaze - A Chartered Builder who is currently a Special Projects Manager at CITB working in partnership with specialist stakeholders, such as INCA, to support the development and delivery of training and assessment.

Richard Mellish - Deputy Director for Household Energy Use with responsibility for the delivery of schemes designed to improve the energy efficiency of the UK housing stock.

Ruud Van Eersel - With over 25 years' experience in the painting and cladding industry, co-founded the Belgian Working Group of ETICS in 2008 and is President of the European Association for ETICS.

Inside...

Vision for the EWI industry	2
Outstanding Achievement	2
Architectural Design Award	5
Non-Residential	6
Domestic New Build	8
Domestic Refurbishment – High Rise	10
Domestic Refurbishment – Low Rise – Multiple Properties	12
Domestic Refurbishment – Low Rise – Individual Properties	16
Project of the Year	18
Training Award	22

Insulated Render and Cladding Association (INCA)

t: 0844 249 0040

e: info@inca-ltd.org.uk

w: www.inca-ltd.org.uk

© INCA Ltd 2016 all rights reserved.

Printed on recycled paper.

Sponsored by:



Vision for the EWI Industry

External wall insulation is on the edge of a revolution. It has already become the ‘go to’ cladding for cost-effective decorative finishes for housing, schools and hospitals.

But for the retrofit market we have only just scratched the surface of the millions of solid wall properties that require insulation. Once it has been determined how this essential work will be paid for, the demand for our products and skills will be unprecedented. But we cannot rest on our laurels. We need to be ready to deliver high quality systems and apply them to the highest standards, and delivering quality is at the heart of everything INCA does.

We also need to work hard to develop markets that are not reliant on grant funding. We offer so much. High levels of insulation for passive houses and systems that can perform for 60 years or more. We can completely transform the appearance of a house or whole housing estate and improve lives of the communities that live in them.

I do not know of another home improvement product that can offer so much. What

we provide not only forms the very basics of modern life, a warm, dry, comfortable home, but also meets the aspirations of a home owner looking to make a statement in their own grand design for their house.

Just INCAse you're not convinced, watch this space.

Mitch Gee
INCA Chairman



Winner | Outstanding Achievement

A respected figure in the EWI industry, David Harrison was appointed INCA Chairman in 2009 and during his three year tenure developed a membership recruitment strategy doubling the number of INCA members. Determined to move the EWI industry and INCA forward, David also actively lobbied the government to create business growth opportunities for members.

Leading INCA from strength to strength, David created an effective Board and Committee structure, championed training and promoted technical expertise. Without his support

and direction, INCA would not be the professional, strategic and financially stable organisation it is today making him a deserving winner of the Outstanding Achievement Award.

David Harrison



Just INCAse...

...choose quality
workmanship every time

If your business depends on quality, you can't afford to leave anything to chance and nothing demonstrates quality like INCA. All members of the Insulated Render & Cladding Association have demonstrated that they maintain our high standards of competence. So when you see our logo, you can be sure your partner won't let you down. Choose an INCA member... Just in case.

#justINCAse



INCA members must meet recognised standards of competence.

INCA. Just INCAse.

Call 0844 249 0040 or visit www.inca-ltd.org.uk



The Kinnell group would like to congratulate all the entries to the 2016 INCA awards.



“ As one of the leading insurers in the RMI sector we support the members and the association as a whole who provide high standards of product and workmanship throughout the UK EWI sector.

**Tel: 01292 268020
www.kinnelleco.co.uk**

Kinnell ECO is a trading name of Warranty Services Limited, a company registered in Scotland, with the registered address of 4 Forbes Drive, Heathfield Industrial Estate, Ayr, Scotland, KA8 9FG, and with the company number SC205797. Warranty Services Limited is authorised and regulated by the Financial Conduct Authority (Firm Reference Number 309580) | VAT Registration Number: 974964555 | e-mail: info@kinnelleco.co.uk



Winner

Architectural Design Award

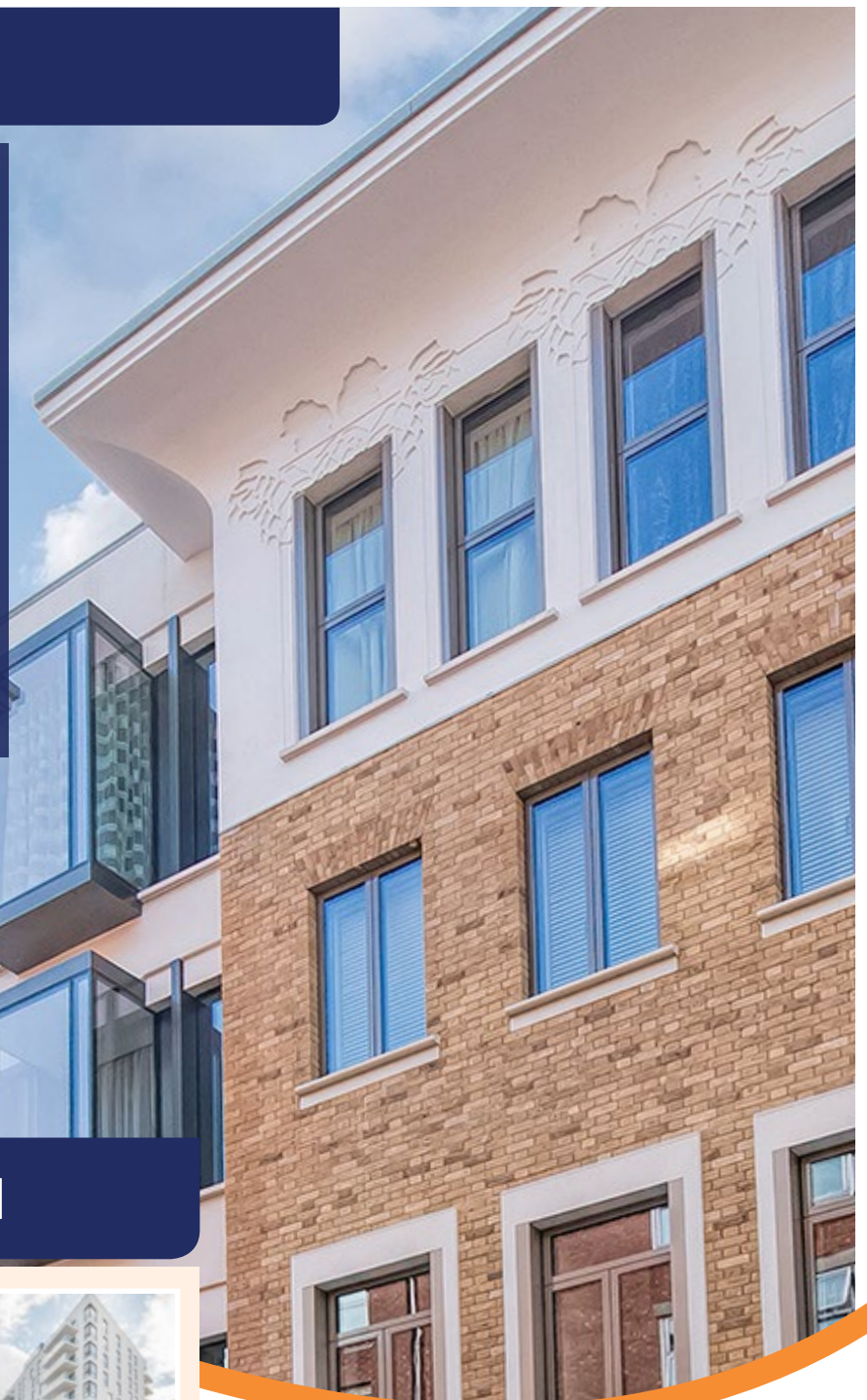
HOP HOUSE LONDON

Architect:

Brimelow McSweeney Architects

Refurbishing this landmark London building to create luxurious new apartments required technical expertise backed by an innovative and flexible approach. Sto and Regency Plastering worked closely with Architects Brimelow McSweeney to create the desired effect demanded by the client.

The judges were impressed by the use of StoDeco Plan boards to enhance the original features including the stone plinth work. A key architectural piece was the creation of a striking curved frieze with clearly defined relief work, designed around the hops of Hop House, making this project stand out from the rest.



Short-Listed

GREENWICH PENINSULA LONDON

Architect:
Jestico + Whites



ISLANDS, CHESTER ZOO CHESTER

Architect:
Dan Pearlman



“A tasteful and architecturally stunning transformation, showing how cladding can really help to enhance the look of a building.”

Winner

Non-Residential

ISLANDS, CHESTER ZOO CHESTER



System Designer:
Sto

Contractor:
Astley Facades

The Monsoon Forest at Chester Zoo is the UK's largest zoological building and forms part of the Zoo's £40 million 'Islands' project, the biggest development in UK zoo history. This project presented a number of challenges as the insulation system would play a crucial role in the wellbeing of the orangutans and crocodiles, and the structure required differing levels of insulation thickness to achieve a U-value of 0.23 W/m²K.

As there were many curves and level changes in the external concrete walls it was crucial that Sto and Astley Facades' design team worked closely together to come up with unique and bespoke solutions.

Short-Listed

CELTIC COURT BRIDGEND

System Designer:
Alumasc Facades

Contractor:
Celtic Rendering Systems

Before After



iCENTRUM DIGITAL PLAZA

Contractor:
Complete Rendering Solutions



"This project is completely unique and demonstrates what can be achieved with EWl."

ALUMASC

FACADE SYSTEMS

Innovation...
Transformation...
Inspiration...

External Wall Insulation Solutions

Creating thermally efficient, attractive buildings and homes

Alumasc is the UK's leading manufacturer of high performance External Wall Insulation, Render & Brick Slip Systems, with a proven track record in both new build and refurbishment projects. Our facade systems provide long-term weather protection, outstanding thermal performance and offer a range of attractive finishes.

Alumasc EWI systems are supported by comprehensive technical advice, fully trained registered installers and long term warranties.

Visit our website to learn more about our innovative products which include:

- The Alumasc Ventilated System**- a BBA approved, ventilated facade solution
- Swisrail**- an NHBC compliant EWI system for framed buildings
- Swistherm**- the first choice EWI system for new build applications
- Scratch Render**- available in a choice of colours

+44 (0) 3335 771 700
www.alumascfacades.co.uk



Winner

Domestic New Build

SOUTH TRELAWNY PLYMOUTH



System Designer:
SPSenviowall

Contractor:
C & P Plastering

This project transformed a former school site into 47 striking new homes, which not only reduced heat loss and carbon emissions, but created aesthetically pleasing features, with the coloured high performance cladding panels.

SPSenviowall and C & P Plastering worked with Galliford Try to provide high quality new homes as part of an affordable housing scheme, tackling the project with a collaborative working approach for the timber frame construction. This project was delivered ahead of schedule providing early tenancy for those in need and advanced income to Devon and Cornwall Housing.

Short-Listed

SOLCER HOUSE SOUTH WALES

System Designer:
Parex

Contractor:
Joyner Group



GREENWICH PENINSULA LONDON

System Designer:
Aliva UK

Contractor:
Regency Plastering



“Great-looking and affordable homes that residents will be comfortable living in.”



**S and B EPS
Limited**

Manufacturers of expanded polystyrene

Lambdatherm®
(Graphite enhanced EPS)



provided by BASF

Working in Partnership with BASF

Manufactured with Polymeric Flame Retardant

Lambdatherm® a graphite enhanced expandable polystyrene manufactured using Neopor®

- + The thermal value for Lambdatherm® using Neopor can reach as low as 0.030w/mK
- + A+ Green guide rating

View our vast range of products online such as flooring, external wall insulation, roofs plus much more.

You can see our full range and all technical information at:

www.lambdatherm.com



Email: company@sandbeps.com
Visit: www.sandbeps.com
Tel: 0191 2500818

Visit www.sandbeps.com for more information



Follow us on
facebook and twitter



Designed by wrigglemarketing.co.uk

Lambdatherm® is a registered trade name.

Winner

Domestic Refurbishment High Rise

HOP HOUSE LONDON

System Designer:
Sto

Contractor:
Regency Plastering

This 1980s office building in London was refurbished to create 29 luxury apartments and required a combination of products and technical expertise supported by an innovative and flexible approach from all parties concerned. EWI was applied to the rear façade to achieve the target U-value of 0.2 W/m²K.

The building's exterior façade was also remodelled to enhance its original Viennese-style characteristics including the creation of a striking curved frieze below the large overhanging eaves of the top floor.



◀ Before

“This project demonstrates an impressive level of technical expertise to create stunning detailing and features.”

Highly Commended

SEAGATE COURT CHICHESTER

System Designer:

Alumasc Facades

Contractor:

Primars Coatings

Due to sea salt erosion, Seagate Court required a complete refurbishment and the Alumasc Switherm EWI system was chosen to protect the buildings and improve their appearance. This project resulted in warmer, structurally sound and stylish buildings which are now protected from future erosion issues.

Before



After



Short-Listed

POLLOCKSHAWS ROAD GLASGOW

System Designer:

Alumasc Facades

Contractor:

A.C. Whyte

Before



After



TWINNELL HOUSE BRISTOL

System Designer:

SPSenvirowall

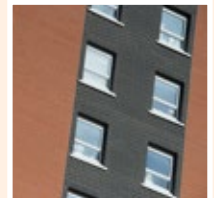
Contractor:

Woodman Brothers

Before



After



Plan. Fund. Deliver.

Sponsor of the INCA Awards 2016
- Domestic Refurbishment High Rise Category



Chelwood House, Bayswater, London



Exeter Road, Enfield, London

We plan, manage, fund and deliver low carbon, renewable and energy efficiency projects across the UK. Our services are specifically designed to help businesses and public sector organisations manage rising energy bills through energy efficiency initiatives.

Our flexible and tailored approach covers project design and development, accessing financing and funding, consultancy, programme delivery and compliance.

With leading energy industry experience to draw upon, AgilityEco can successfully guide you through your project from start to finish. We've built and delivered some of the largest and most successful energy efficiency programmes in the UK.

Visit our website and read our case studies to find out more.

#buildingefficiency



AgilityEco | T: 01372 738952 | E: enquiries@agilityeco.co.uk | www.agilityeco.co.uk @AgilityEco

Winner

Domestic Refurbishment Low Rise - Multiple Properties

PLYMOUTH COMMUNITY REGENERATION PLYMOUTH

System Designer:
Alsecco UK

Contractor:
British Gas

This EWI project is the largest ECO1 scheme in the UK and has transformed almost 4,000 properties in less than two years, significantly reducing the number of tenants living in fuel poverty. The scale of the regeneration has not only enhanced appearance of the area, but provided hundreds of employment opportunities, increased the value of the housing stock and has prompted further investment in the area.

U-values improved significantly from 2.47 W/m²K to 0.30 W/m²K for all property types, resulting in more comfortable living environments, while lowering fuel bills and fuel poverty across Plymouth.



◀ Before

“The range and volume of this project, and its contribution to the local economy, is extremely impressive.”

Highly Commended

PINE STREET DURHAM

System Designer:

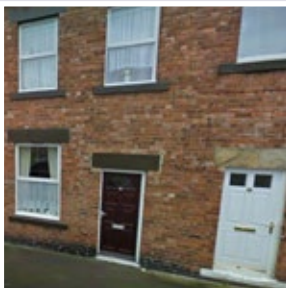
Alumasc Facades

Contractor:

Westdale Services

As these properties were constructed in 1900 it was important the Victorian heritage was maintained whilst transforming the energy performance of the houses. Alumasc's Rendabrick did just that and the 100 per cent take up by homeowners has resulted in a very impressive finish.

Before



After



Short-Listed

DINNINGTON ROTHERHAM

System Designer:

Saint-Gobain Weber

Before



After



BALGAY STREET DUNDEE

System Designer:

Alsecco UK

Before



After



THE LONG GROUND STROUD

Contractor:

Rateavon

Before



After



KINGSWAY GOOLE

System Designer:

Alumasc Facades

Contractor:

Westdale Services

Before



After



FABRICATING SOLUTIONS



Wemico blends traditional craftsmanship and values alongside modern precision and pace which allows cost effective, quality products to be produced.

We finish to customer's specification, offering a powder coating service to BS and Qualcoat Standards.

Made to measure • On site estimating • Consultation and Development



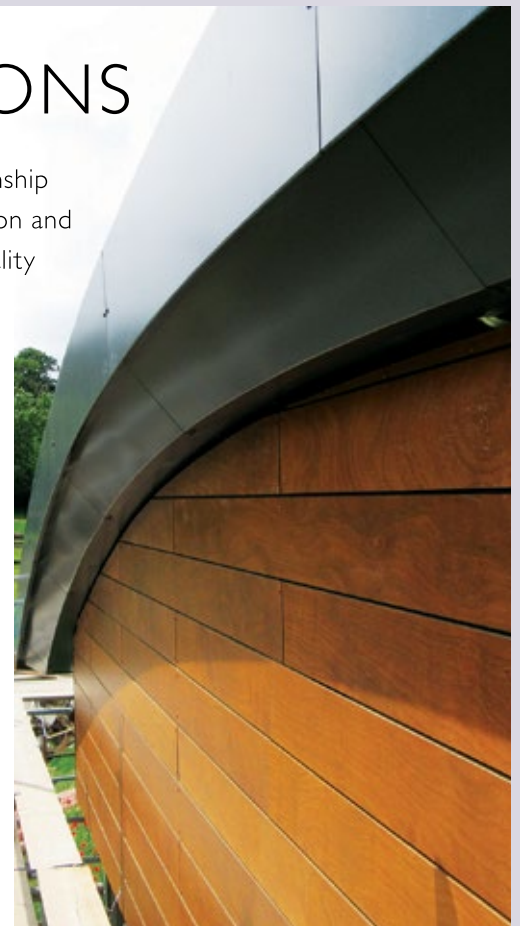
WEMICO

WESTERN EXPANDED METAL INDUSTRIES COMPANY LTD.

Matthew Lane, Hoo Farm Industrial Estate, Kidderminster, DY11 7RA

Tel: 01562 820123 • Fax: 01562 822012 • Email: sales@wemico.co.uk

www.wemico.com





British Gas:

Helping people today and securing energy for tomorrow with solid wall insulation

Using state of the art technology and applying best practice design principles our teams are specialists in solid wall insulation and the delivery of ECO funded projects.

The key to success is not only providing the whole customer journey from initial consultation, project development and planning through to delivery, operation and maintenance but also our ability to engage with all stakeholders. Specifically, during any

social housing scheme our onsite teams engage with the local community meeting the needs of individual households while also rejuvenating the wider communities.

Our expert teams work closely with local authorities, housing associations, NHS Trusts, private sector businesses, educational establishments, consultants, architects and contractors to deliver long term solutions to meet their needs.

The UK's largest ECO1 scheme delivered in Plymouth

3,908
homes
insulated

102,507*
tonnes
carbon saved

200,000 m²
external wall
insulation
installed

Delivered
11 months
ahead of
schedule

£7,500
raised for
charity by the
community

"The house looks fantastic, we are delighted with it and our house is so warm now. They've just done a great job, thanks British Gas." Mr and Mrs Metcalf, Ringmore Way

 www.ec1contracts.com

 laha@britishgas.co.uk

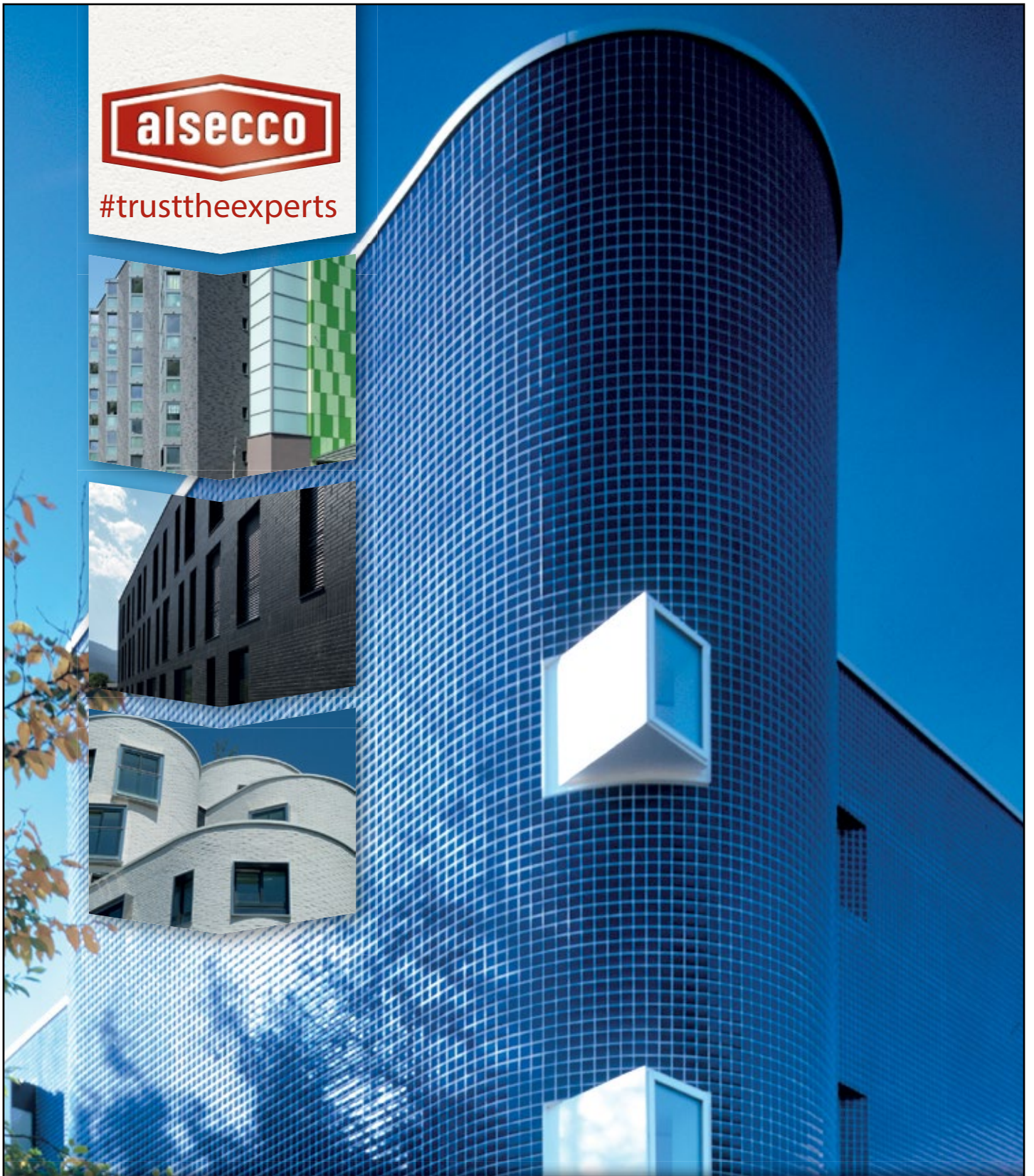
 01788 537878

*Estimated calculation


British Gas



#trusttheexperts



Collection alsecco

Just INCAse you need a creative solution.....

Tel: 01785 818998

Web: www.alsecco.co.uk

Email: marketing@alsecco.co.uk

Winner

Domestic Refurbishment
Low Rise - Individual Properties

STONELEIGH
TELFORD



System Designer:
SPSenviowall

Contractor:
SERS Energy Solutions

The rounded front of this house in Telford presented a challenge straight away and SERS and SPSenviowall had to ensure that when adapting the EWI boards for the building, the thermal performance was not affected and the required 0.3 W/m²K U-value was achieved.

The owner of the building was working on a tight budget, however SERS ensured high-quality workmanship at every stage of the installation by developing an eight stage quality assurance process, so that any difficulties could be overcome, ensuring the building was finished to a high standard.



◀ Before

“This unusually designed building has been transformed into a striking modern building, with a fantastic finish.”

Highly Commended

Short-Listed

ALMA HILL DERBYSHIRE

System Designer:

SPSenvirowall

Contractor:

Westville Group

This uninviting solid brick house was transformed into an attractive and warm home. Westville overcame the difficulty of working with previously poor render and window bays to successfully achieve a 0.3 W/m²K U-value.

Before



After



CRABGATE LANE DONCASTER

System Designer:

Alumasc Facades

Contractor:

Westdale Services

Before



After



HUNTS LANE WILLENHALL

System Designer:

SPSenvirowall

Contractor:

SERS Energy Solutions

Before



After



IT'S TIME FOR A NEW FACE.

External Wall Insulation
& Render Systems



At Johnstone's we offer high performance External Wall Insulation, Render Coatings and Paint products giving you the total solution for building exteriors. With BBA accreditation, our systems provide the ultimate protection and quality assurance. Call 01924 354354 for further information.

www.johnstonestrade.com

Project of the Year

ISLANDS, CHESTER ZOO CHESTER

System Designer:
Sto

Contractor:
Astley Facades

The 'Islands' project at Chester Zoo has been awarded Project of the Year for 2016 for its interesting and different use of EWI, providing warmth and safety for the unusual inhabitants.

The judges were impressed by its complexity and interesting structure, and both Astley Facades and Sto's ability to develop bespoke solutions to the challenges that they faced working at a live zoo.



“As a tourist attraction, this project was finished to the highest of standards, proving just what this industry can do, making it a worthy winner for 2016.”



A company who will rise to the challenge of both the most technically complex and logistically demanding of projects.

Astley Facades (UK) Limited are a multi award winning leading provider of envelope, thermal improvements and whole façade solutions, throughout the UK.

From our Head Office we offer the service to co-ordinate the In-House Design, Supply, Delivery and Installation to both New Build and Refurbishment schemes and operate in the broad ranging Residential, Student Accommodation, Education, Manufacturing, Commercial, Retail, Leisure and Health sectors.

Approved installers of the majority of EWI and Render systems, we have evolved and added to the portfolio a suite of external rainscreen, glazing

and through wall solutions to offer the UK market a complete tailored and bespoke envelope solution to suit all circumstances.

Our approach to winning work with a select group of specialist & innovative supply chain partners, added to our core strength of retained and highly trained skilled staff, provide a commitment to manage every scheme from concept to completion, on time, within budget and most importantly - safely.



INCA 2016 Short Listed Finalist for 'The Islands' Chester Zoo

For further details contact our team:

01942 276008

admin@astleyfacades.co.uk

www.astleyfacades.co.uk



Structural External Wall Insulation

For non-traditional low and
high rise buildings

**St Clements Close,
Worcester**

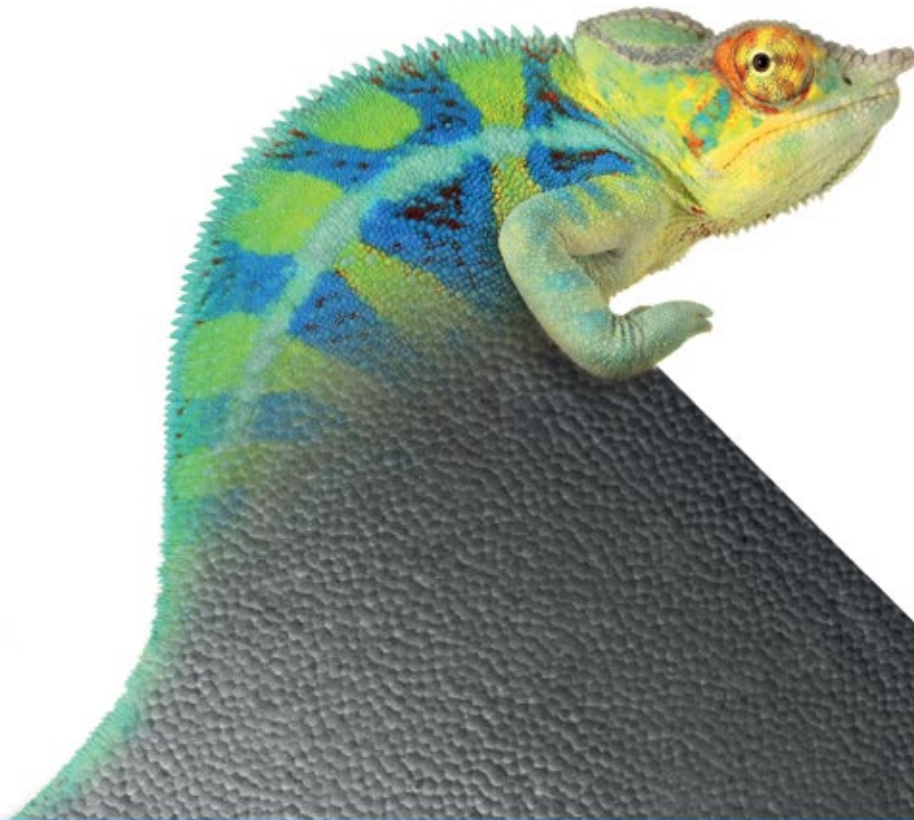
2015 Winner in the
INCA awards Domestic
Refurbishment
High Rise category



S and B EPS Limited

Manufacturers of expanded polystyrene

Lambdatherm®
(Graphite enhanced EPS)



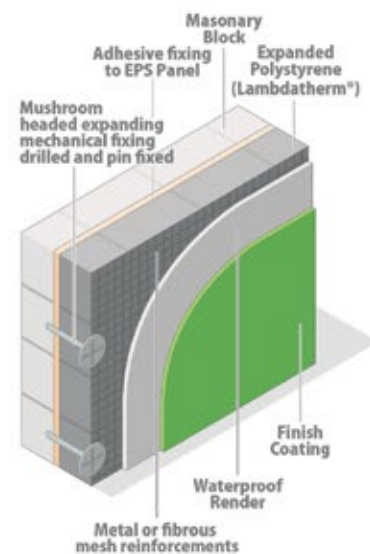
- + Lightweight
- + Thermally advanced
- + Versatile
- + Easy fix
- + Cost effective
- + Green Guide A+ rating

S and B EPS External wall insulation board is an advanced method of adding thermal value to the outer face of external walls.

The versatility of **Lambdatherm®** allows you to finish the wall in a number of different ways, giving you the style of building you want with the level of insulation you demand.

What's more, with partnering **BASF** you can be assured that **Lambdatherm®** is a product you can rely on.

- + The thermal value for **Lambdatherm®** using Neopor can reach as low as 0.030w/mK
- + Manufactured with the new polymeric flame retardant.



Email: company@sandbeps.com
Visit: www.sandbeps.com
Tel: 0191 2500818

Visit www.sandbeps.com for more information



Follow us on
facebook and twitter



Designed by [wrigglemarketing.co.uk](http://www.wrigglemarketing.co.uk)

Lambdatherm® is a registered trade name.

Winner | Training Award

SAINT-GOBAIN WEBER

Weber clearly understands how important training is for the future success of the industry. They recently upgraded their existing training facility to a state-of-the-art Technical Academy and have invested heavily in providing additional site-based training and education for its customers throughout their projects. Weber's impressive set up and investment in training is commendable and will inspire others to commit to train their workforce.

Highly Commended

GREG CURTIS – ALUMASC FACADES

With over 25 years of industry experience, Greg always strives for the best possible EWI installation when coaching and training approved and new installers. Greg commands the respect of his peers, resulting in well trained and conscientious operatives. The judges agreed that Greg Curtis is a credit to his organisation.

Short-Listed

ALSECCO UK SPSENVIRWALL

citb.co.uk



CITB is proud to support the INCA Awards 2016

People are vital to construction and the economy. We want to inspire the next generation to join our industry.

We're putting people and skills first to make sure we can meet demand and deliver growth now and in the future.



At Weber, we believe that what matters most in the construction industry is to care about people and their environment.

System-built non-traditional or traditional construction, low or high rise – **Weber** has a rich background of providing EWI systems for refurbishment projects going back 40 years. **Weber** External Wall Insulation is suitable for all types of properties and can significantly lower heating bills and carbon emissions as well as making the properties warmer and weather-tight whilst a choice of colour and texture will enhance the appearance of buildings and the local area substantially.



HIGH Spec.
HIGH Returns.

RAINSCREEN CLADDING | MASONRY FAÇADES | MASONRY WALLS | STEEL FRAME SYSTEMS | RISING HIGH

Thin, light, HIGH performance insulation

- Slimmer façade constructions with lower U-values.
- Extra space without compromising energy efficiency.
- Greater internal floor area to generate greater rental returns.
- Easier handling for a smoother installation.

Kingspan Kooltherm® K15 Rainscreen Board



Learn more. Go to: www.kingspaninsulation.co.uk/RisingHigh

INCA

Insulated Render and Cladding Association



Representing the major system designers, a nationwide network of specialist installers, and the key component suppliers in the external wall insulation (EWI) industry.

Using an INCA member provides clients with confidence that they are working with a reputable Specialist Contractor that meets recognised standards of competence.

Exclusive range of benefits

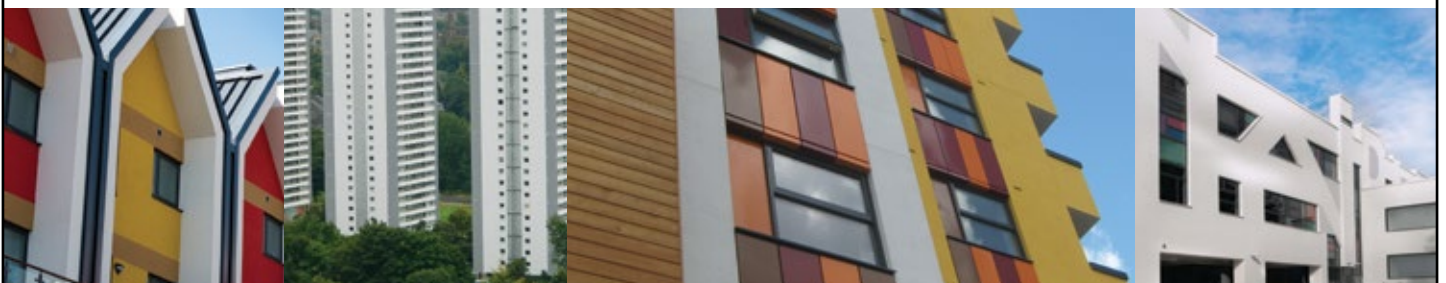
- ✓ High level representation and first point of contact for Government and other key stakeholders
- ✓ Members with a proven track record of financial and technical delivery
- ✓ Commitment to health and safety and a qualified workforce
- ✓ Wide-ranging business support
- ✓ Up to date guidance and information
- ✓ Forum for sharing best practice
- ✓ UK member of the European Association for External Thermal Insulation Composite Systems (EAE)

Join INCA today!

t: 0844 249 0040

e: info@inca-ltd.org.uk

w: www.inca-ltd.org.uk



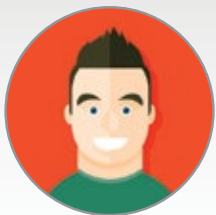
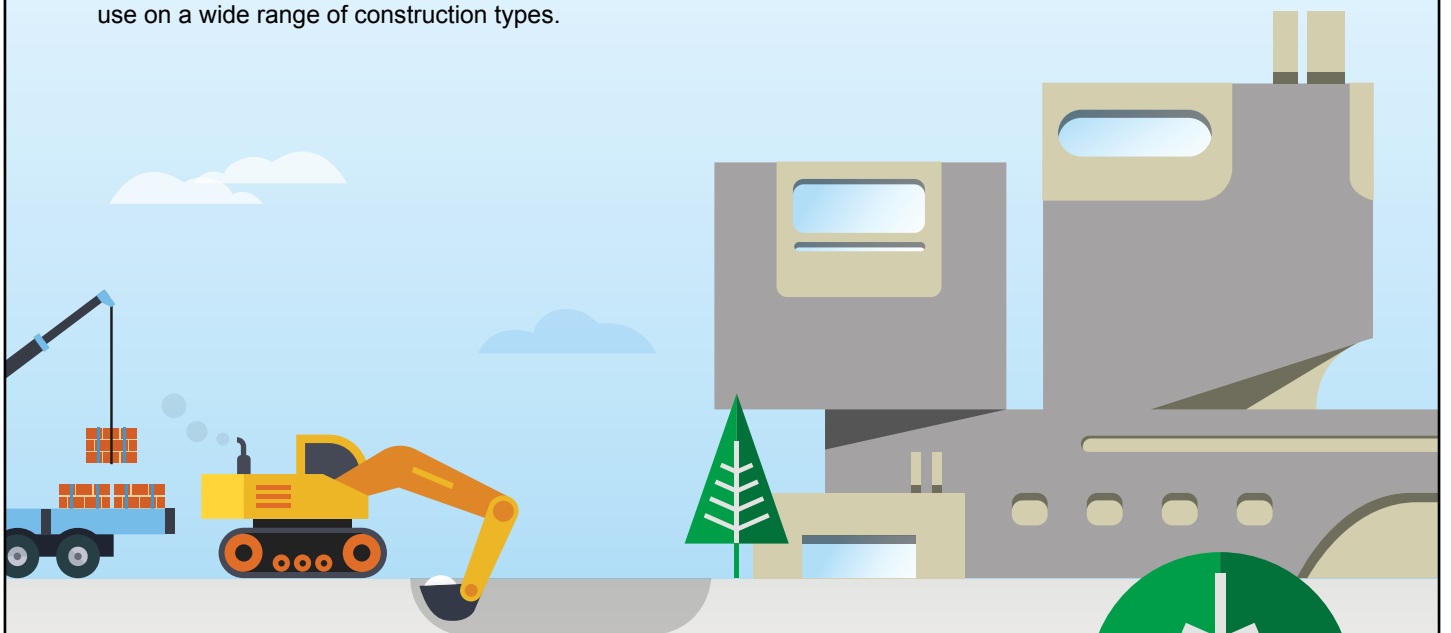
Energy
Efficiency
Partnership
for Buildings



A lot will change in the next 60 years. Your external wall insulation system doesn't have to.

At SPSEnvirowall we understand architects. So we know that you aren't just looking for value, you're looking for a partner to work with - from the first sketch to the final brick. That's why we work alongside you, through every step of your project to help you get the most out of our external wall insulation systems.

Our wide range of services includes specification, on and off site technical support and project specific detailing. We can offer advice on acoustics and fire protection, as well as help with wind load, u-value and condensation calculation. And our local network of branches means that we can offer a wide range of cost-effective, accredited rendered cladding solution systems for use on a wide range of construction types.



For more information

Call our team on **01443 803086**

Email us at marketing@spsenvirowall.co.uk

or visit us at spsenvirowall.co.uk

