



INCA 2012 Awards

The Insulated Render and Cladding Association (INCA) is delighted to present the INCA 2012 Awards recognising innovation and excellence in the external wall insulation (EWI) industry.

Criteria for Entry

- ✓ The project must:
 - be within the UK
 - have a completion date between 1 January and 31 December 2011
 - have a U-value of 0.3W/m²K or less
 - not have previously been short-listed in the INCA Awards.
- ✓ Entries may be submitted by the system designer, contractor, key component supplier, client, architect or specifier but must have the approval of all parties concerned including the building owner if required.
- ✓ Both the system designer and contractor involved in the project must be current members of INCA at the time of entry.
- ✓ Entries should be accompanied with a maximum of 5 photographs of the project ideally including both close ups of technical detail and longer range images of the entire project. For the Refurbishment categories, 'before' and 'after' images must be supplied.
- ✓ Entries must be received by INCA by **Monday 19 March 2012**. Late entries received after this date will not be considered.

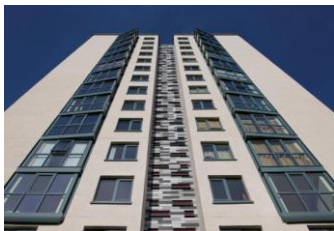
Entries must be submitted in accordance with the above criteria for entry. All information required on this form must be provided. Entries that are not received in the prescribed format will not be considered.

Judging will be undertaken by an independent panel overseen by INCA which will take into account the following:

- Technical difficulty
- Thermal performance
- Design and aesthetics
- Quality of workmanship.

Please note that additional credit will be awarded for projects that demonstrate a high level of technical difficulty and/ or outstanding thermal performance.

The shortlist will be announced in July 2012 and the awards will be presented at the 2012 INCA Conference & Exhibition on **Wednesday 3 October 2012**. The Judging Panel's decision will be final.



INCA
6-8 Bonhill Street, London, EC2A 4BX
T: 0844 249 0040 F: 0844 249 0042 E: info@inca-ltd.org.uk
www.inca-ltd.org.uk

Office Use Only:

Date Received	
Criteria Met	
Reference	
Category	

Office Use Only:

Reference	
Category	

Entry Form

1. Company

Contact Name	
Company Name	
Email	
Telephone Number	

2. Category

Please select the award category that you are entering:

Domestic New Build		Non-Residential New Build	
Domestic Refurbishment - High Rise		Non-Residential Refurbishment - High Rise	
Domestic Refurbishment - Low Rise 5 houses or fewer		Non-Residential Refurbishment - Low Rise	
Domestic Refurbishment - Low Rise 6 houses or more			

3. Project

Project Name		
Project Address		
System Designer		
Contractor		
Key Component Suppliers		
Client		
Architect		
Specifier		
Completion Date of Project		

Please send your completed entry form together with high resolution images on CD/ USB memory stick or via email by **Monday 19 March 2012** to:

INCA, 6-8 Bonhill Street, London, EC2A 4BX

info@inca-ltd.org.uk

Office Use Only:

Reference	
Category	

4. Specification

System Type	
Insulation Type	
Finish and Colour	
Design Features	
Construction Type	
U-Value	
Certification Achieved <i>e.g. BREEAM/PassivHaus</i>	

5. Written Statement

Please explain in a maximum of 500 words using the headings provided why you believe this is an award-winning project. Additional credit will be awarded for projects that demonstrate a high level of technical difficulty and/ or outstanding thermal performance.

Technical Difficulty

Thermal Performance

Office Use Only:

Reference	
Category	

Design and Aesthetics

Quality of Workmanship

Please provide any other information that you wish the Judging Panel to consider